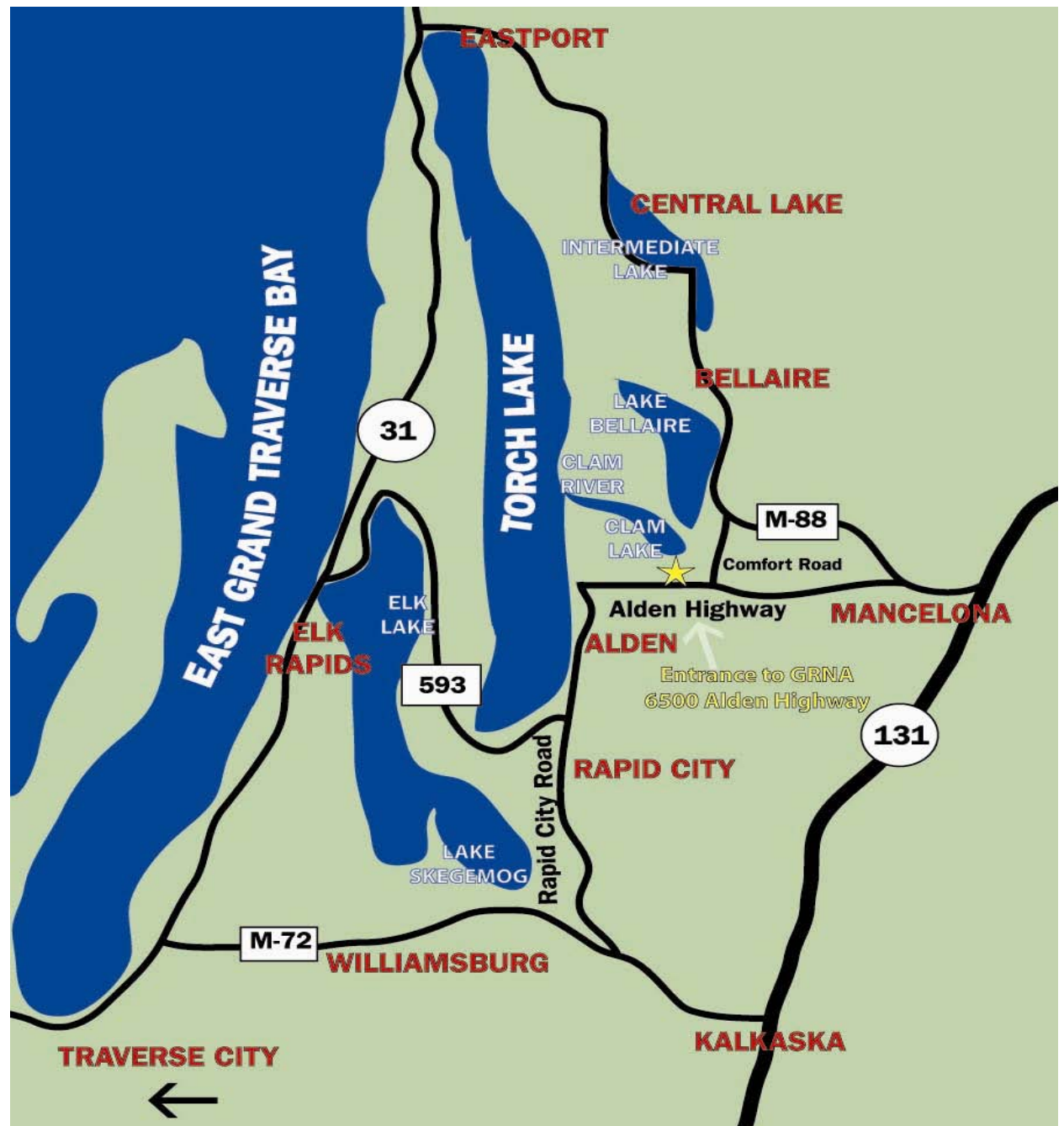
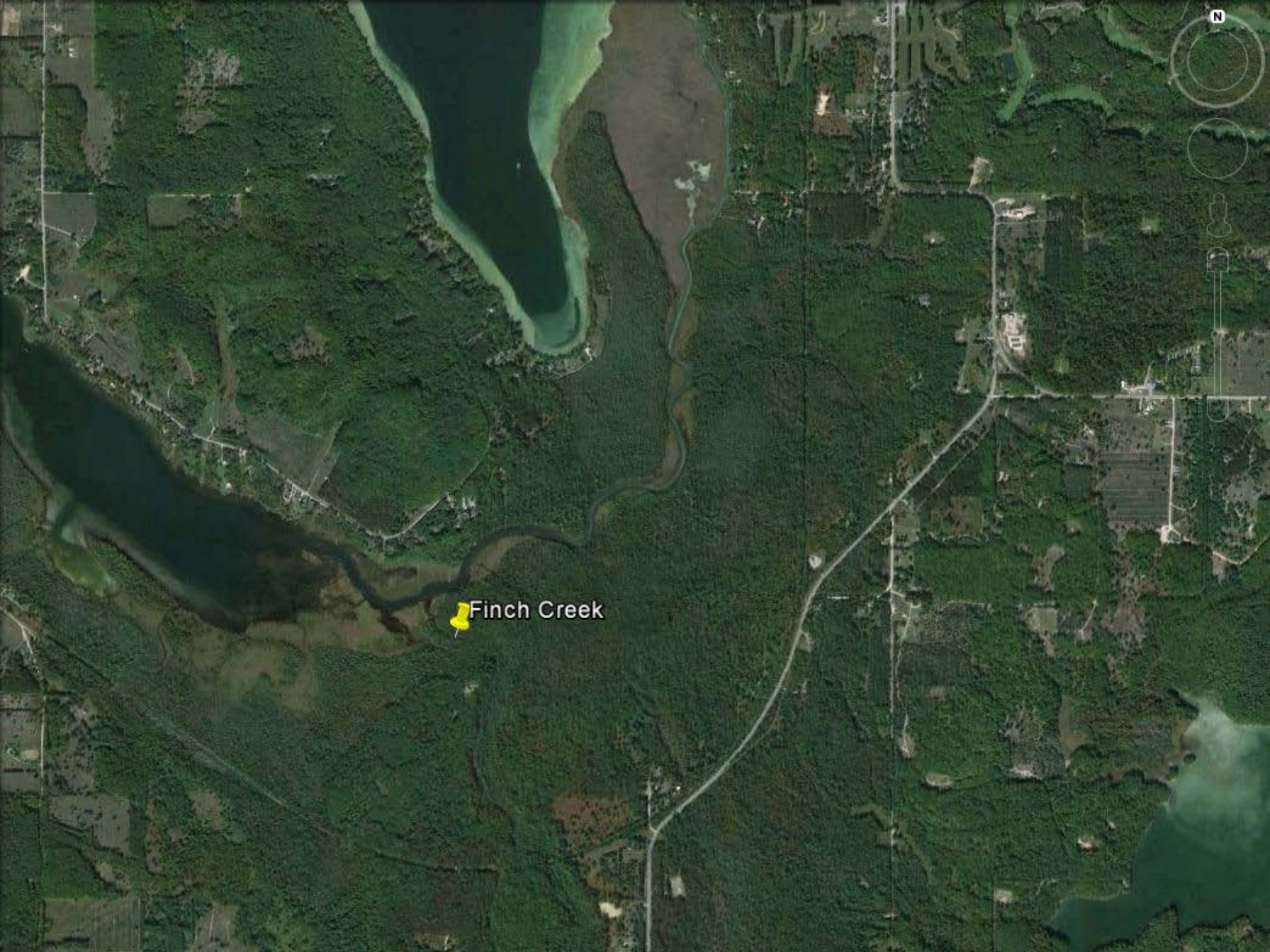


# Riparian stresses on the macroinvertebrate population in the Grass River Natural Area watershed

Richard Hannan  
Conservation Program  
Grass River Natural Area







Finch Creek



# The MiCorps Project at GRNA 2013-2015

- Received the grant in 2013
- Conducted 5 collection events
- Established a system to take into the future



# Our Collection Sites



Shanty Creek



Cold Creek



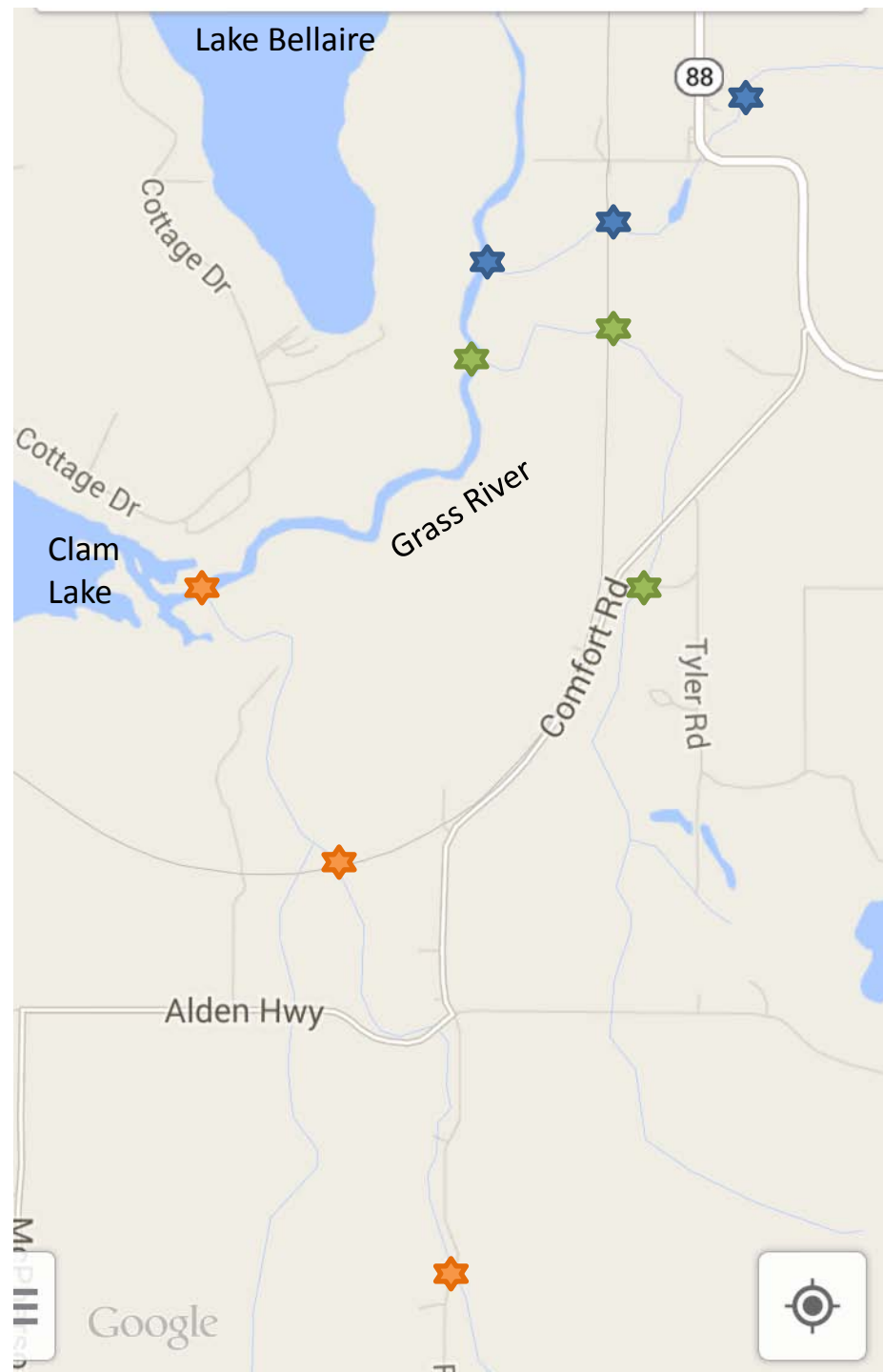
Finch Creek

Overall

Cold Creek was rated  
as fair

Finch Creek was fair -  
bordering good, and

Shanty Creek was fair-  
bordering poor

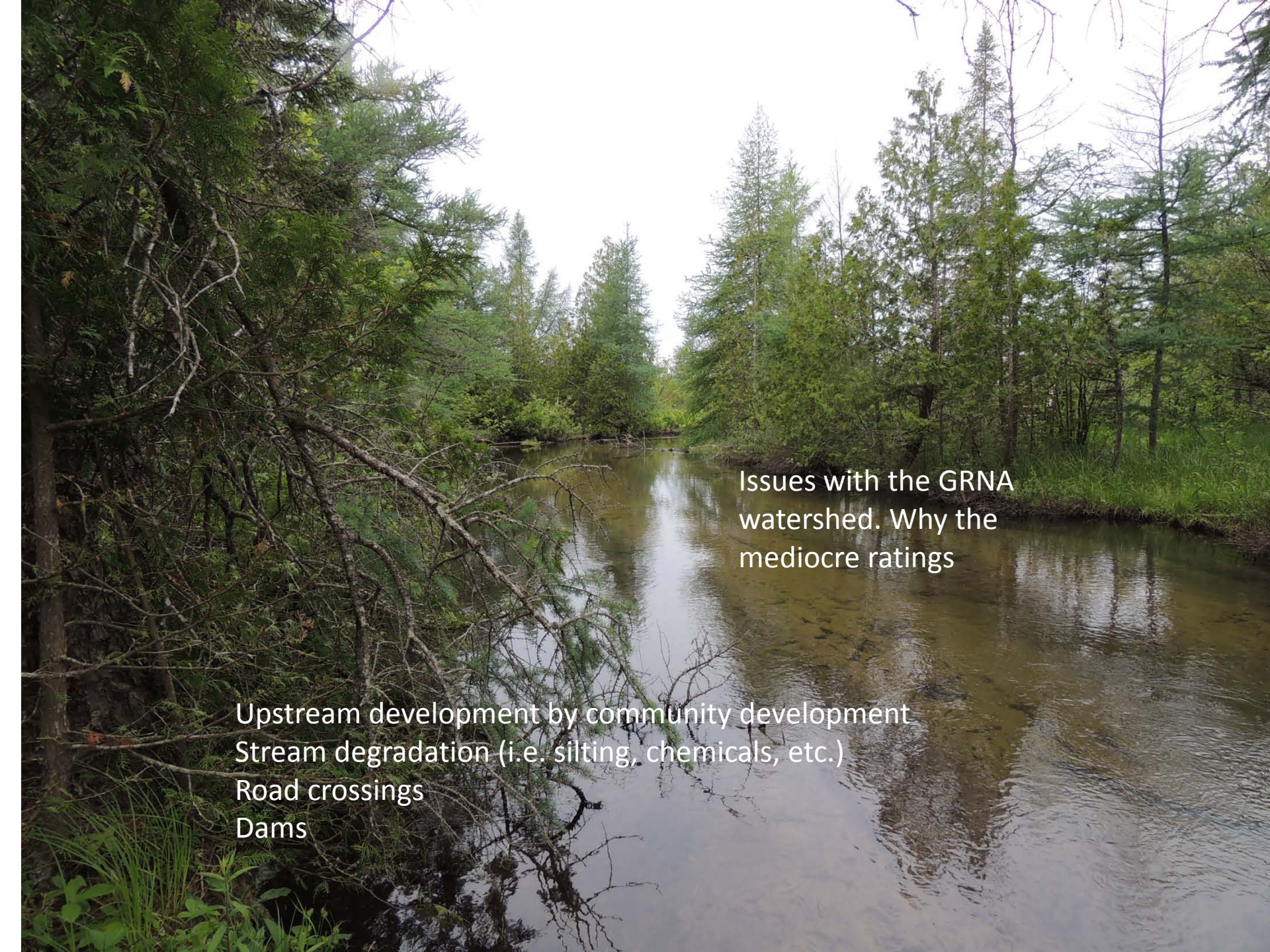






‘Picking the samples’





Issues with the GRNA  
watershed. Why the  
mediocre ratings

Upstream development by community development  
Stream degradation (i.e. silting, chemicals, etc.)  
Road crossings  
Dams



















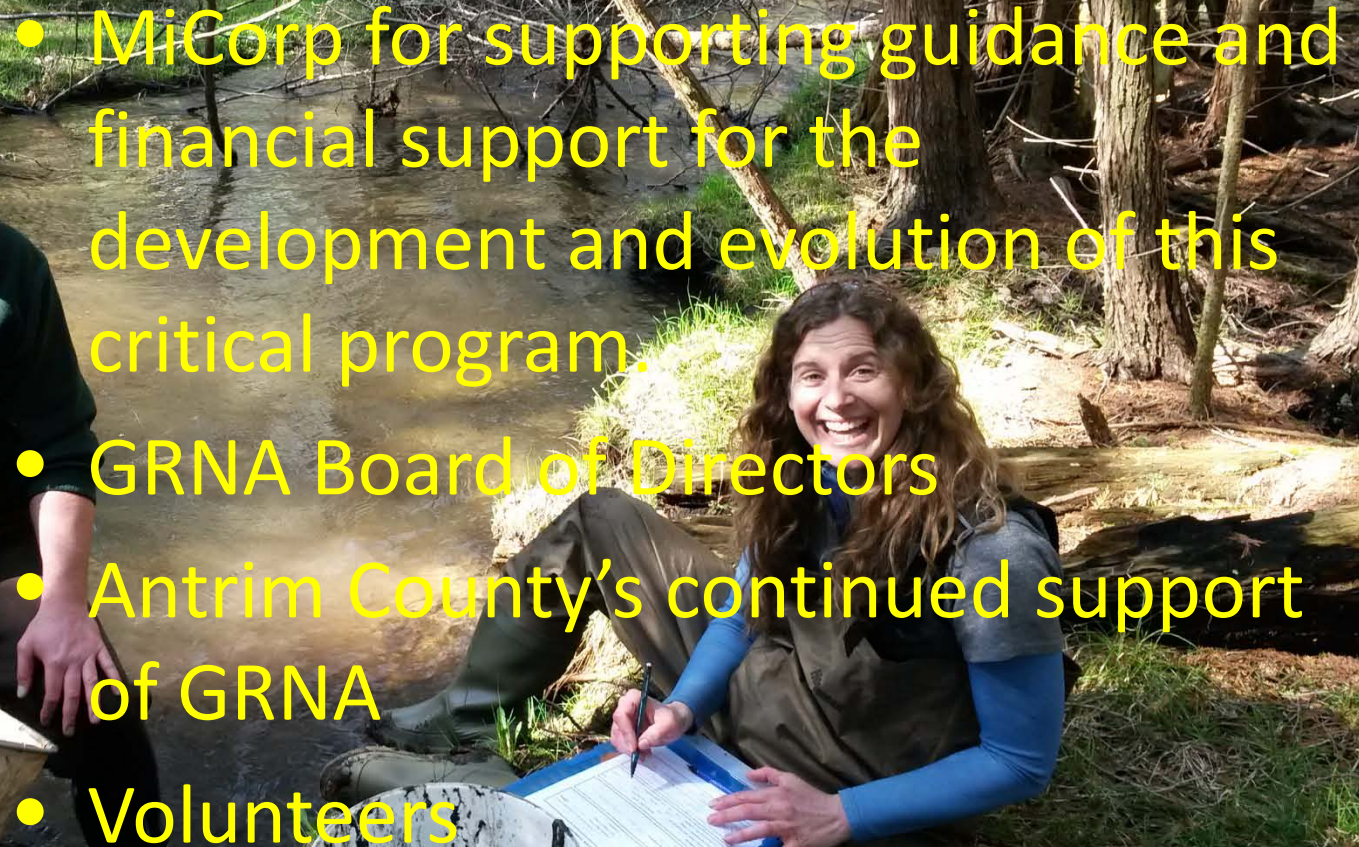








# Acknowledgements

- 
- A photograph of a man and a woman in waders standing in a shallow stream. The man on the left is wearing a green shirt and brown waders, holding a net. The woman on the right is wearing a blue shirt and brown waders, sitting on a log and writing on a clipboard. The background shows a forest with trees and a stream.
- MiCorp for supporting guidance and financial support for the development and evolution of this critical program.
  - GRNA Board of Directors
  - Antrim County's continued support of GRNA
  - Volunteers

## Questions?