

# EAGLE LAKE

## CASS COUNTY

### Southwest Michigan

379 acres



There are many activities taking place  
on Eagle Lake.

A beautiful moon compliments a  
sunrise to start the day.



# An enjoyable morning kayaking with friends





# Our yearly Poker Run ending on the Sand Bar to find the winning hands





Neighboring horses even  
come to cool off.



# Practicing for the Triathlon is common in June and July





A great place to sail into the  
sunset.





Two deer take a shortcut  
across the lake.



Ice fisherman, cross-country skiers and snowmobiles are active in the winter.



Yes, Eagle Lake is a beautiful place to live on and play in; but this should come with everyday responsible behavior.





# Things I do to preserve my lake;

- Use Phosphorus Free Lawn Fertilizer
- Board Member of *Eagle Lake Improvement Association*
- Re-Vitalize My Shoreline and Plant Native Plants
- Learn More About Our Watershed and Protect It
- Clean Up After Pets
- Join MLAS, Inc.
- Learn about Inland Lake's Ecosystem
- Pass On My Understanding to others
- Recruit a team of Volunteers
- **ENROLL IN MICORPS CLMP PROGRAM**

*"Never doubt that a small  
group of thoughtful,  
committed people can change  
the world. Indeed, it is the  
only thing that ever has."*

Margaret Mead



# VOLUNTEER

1. Somebody who works for nothing.
2. Someone acting without legal obligation.
3. Do something by choice
4. Somebody acting voluntarily.
5. One who enters into any service of his own free will.
6. To offer or give voluntarily.
- 7. BECAUSE THEY WANT TO AND THINK IT IS IMPORTANT.**



Recruiting Volunteers and keeping them enthused is not always easy.



Proper training is important;  
so is following it.  
What is wrong with this picture?





Charlie is “Happy” to do it the correct way.





Lynn is collecting water samples to filter and then measure for Chlorophyll.



# Paul pulls up weeds with a 2-sided rake



- Lakes can sometimes be invaded by an aquatic plant species not native to Michigan. These exotic plants can be extremely disruptive in a lake's ecosystem and recreational activities.
- This is why the **EXOTIC AQUATIC PLANT WATCH** is an important monitoring program of CLMP.

Brigid keeps  
record of what is  
going on during  
the monitoring  
process.

*Writing down accurate notes is  
essential while monitoring your  
lake.*



# How to keep Volunteers involved

- Show/Express your appreciation.
- Let them know you realize their time is valuable.
- Give them enough notice for when you need their time or explain why you need them in such short notice. (Weather, equipment, boat, deadlines.)
- Try to accumulate enough volunteers so as not to depend on the same people all the time.
- Don't be “pushy” and put people on the spot.
- Give volunteers enough information so they understand what they are doing is important and time well spent.
- **Make it fun!**



# EXOTIC AQUATIC PLANT WATCH

Heading out with “Happy Volunteers”  
to find any exotic plants before they spread  
across the lake.



# Assorted aquatic weeds pulled out of Eagle Lake

Natives:

Muskgrass, Pondweed,  
Northern Watermilfoil,  
Bushweed

And some invasive  
Zebra Mussels





# *Native Species*

Northern Watermilfoil



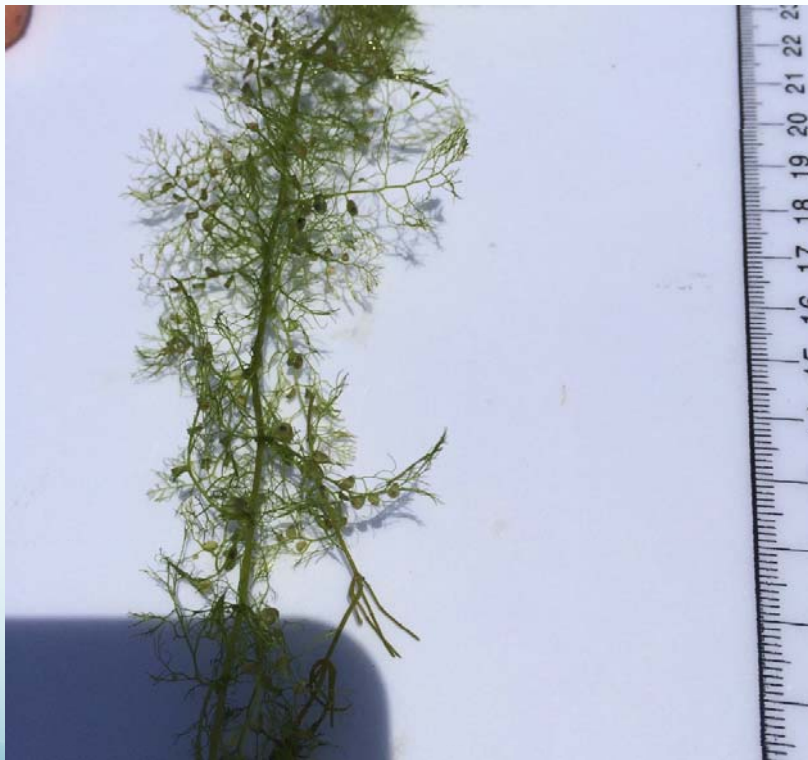
Large-Leaf Pondweed





# Native Species

Bladderwort



Chara



# ***EURASIAN WATERMILFOIL***

## ***Invasive Species***



# Invasive Water Milfoil

approximately 5 acres remaining in 2015

Mapping done by Restorative Lake Sciences



Figure 7. Invasive Watermilfoil distribution in Eagle Lake, Cass County, Michigan (July 23, 2015).



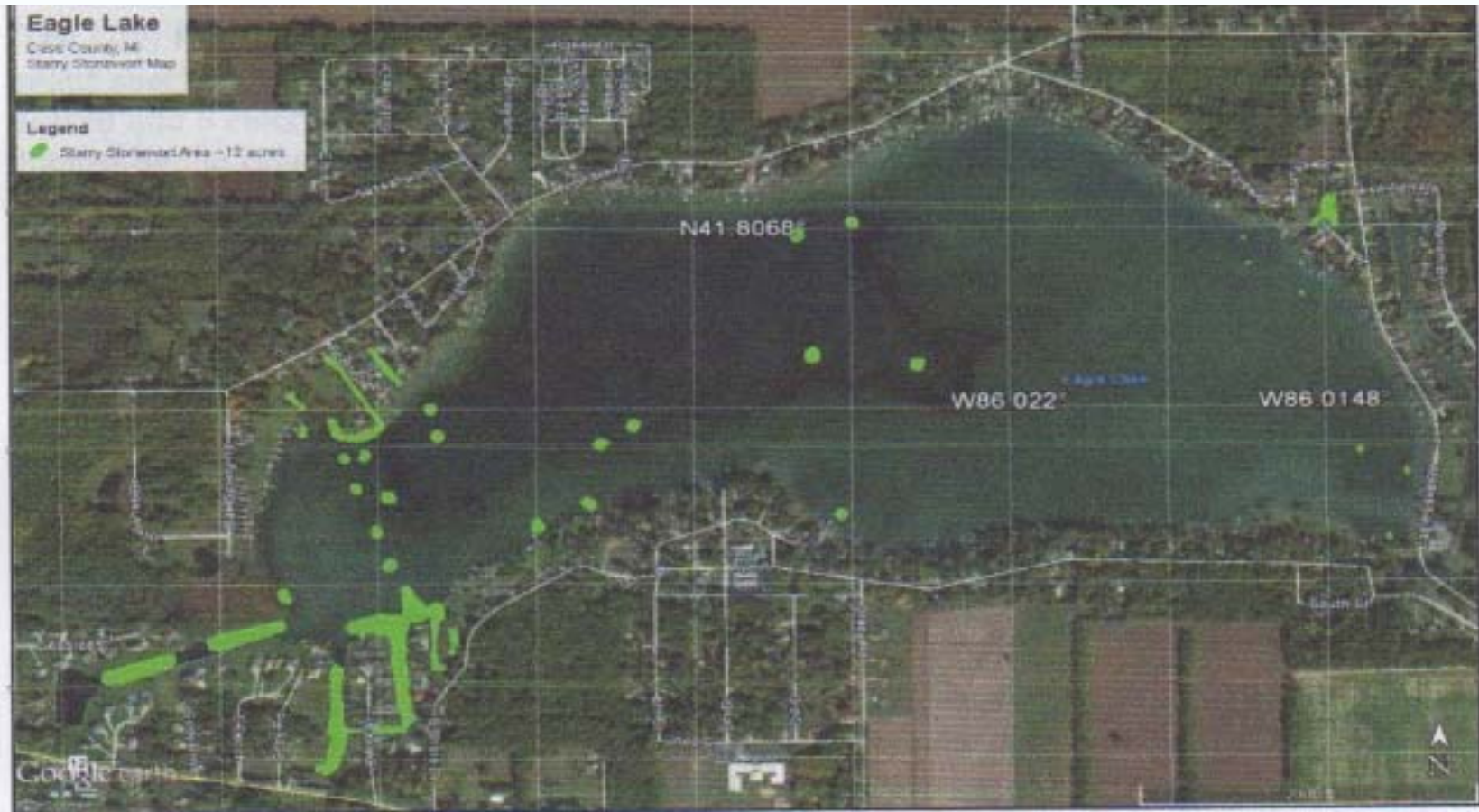
# Starry Stonewort

## *Invasive Species*



Starry Stonewort had multiplied to 13 acres  
within weeks.

Mapping done by Restorative Lake Sciences





# Eagle Lake Survey report prepared by Restorative Lake Sciences

Page 9

## 1.3 Starry Stonewort Biology and Ecology

Starry stonewort (*Nitellopsis obtusa*; Figure 5) is an invasive macro alga that has invaded many inland lakes of Michigan and was originally discovered in the St. Lawrence River. Approximately 12 acres of this invasive alga was found in Eagle Lake and in the canals. The “leaves” appear as long, smooth, angular branches of differing lengths. The alga has been observed in dense beds at depths beyond several meters and can grow to heights in excess of a few meters. It prefers clear alkaline waters and has been shown to cause significant declines in water quality and fishery spawning habitat. Management options for the plant are provided in the management recommendations section of the report.



Figure 5. Starry Stonewort

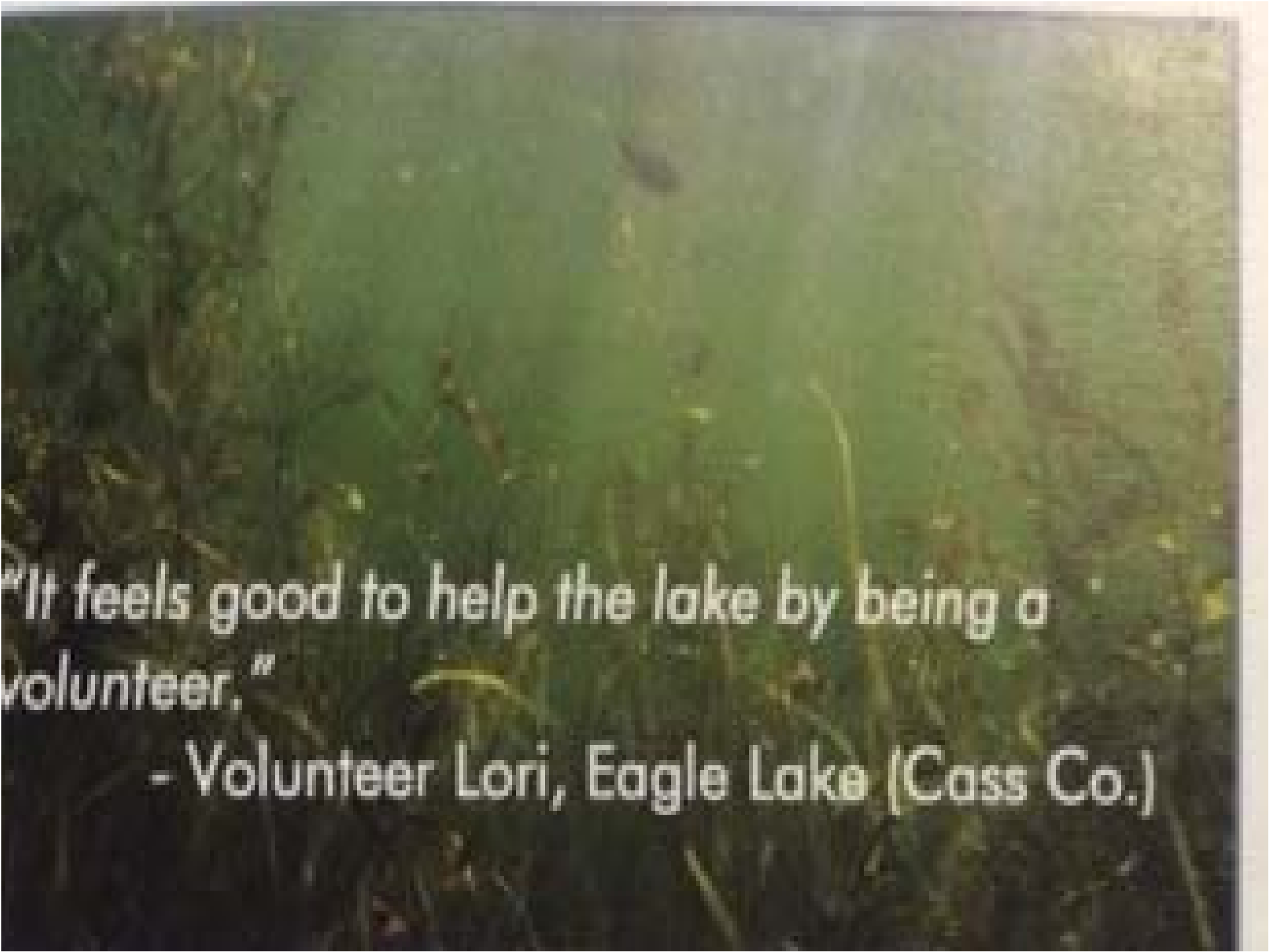


# TREATMENTS

- May 22, 2015 – Survey for invasive weeds to be treated, particularly Hybrid Eurasian Milfoil.
- June 9, 2015 Treatment by LakePro, Inc using Chelated Copper ,Copper Sulfate, Triclover and Diquat Dibromide.
- June 18, 2015 Discover Starry Stonewort during EAPW
- Sept. 21, 2015 Treatment for Starry Stonewort (canals 9 acres & offshore 13 acres) and remaining Milfoil (6 acres)

# Blue Moon setting over Eagle Lake “Beautiful”





"It feels good to help the lake by being a  
volunteer."

- Volunteer Lori, Eagle Lake (Cass Co.)