

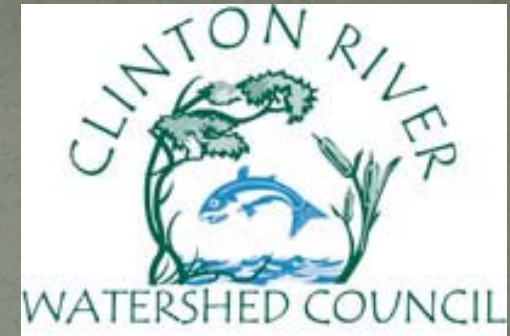
Streets & Streams – Where They Meet

Clinton River Watershed Council

Matt Einheuser
MiCorp Conference
November 2016

Background

- Clinton River Watershed Council
- Expand on existing road stream crossings to 2 subwatersheds
- Build Volunteer program
- Received 2015 MiCorp Road Stream Crossing Inventory Grant



Goals and Objectives

- Build volunteer-based program
- Fill data gaps in Clinton River Watershed related to RSX.
- Prioritize potential restoration sites and start the communication with local road commission to build partnership
- Recruit and Train Volunteers / Interns
- Build monitoring plan and site lists for program
- Survey 50 – 75 road stream crossings in 2 subwatersheds
- Prioritize sites for further attention
- Share data with road commission and other partners

Volunteers

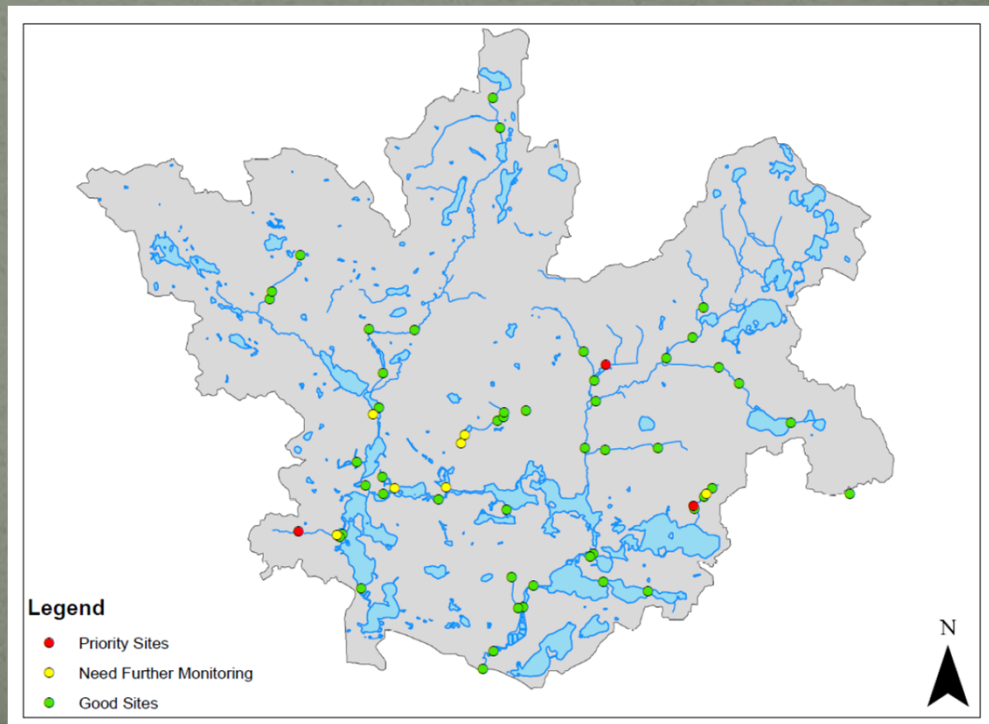
- Recruiting: email, facebook, newsletter, tap into existing volunteers
- Volunteer Trainings
 - 12 people attended (5 volunteers, 6 interns, 1 Road commission employee)
- 2 volunteer teams
 - Team leaders (attended training)
 - Sign out equipment
 - Given list of sites w/ maps



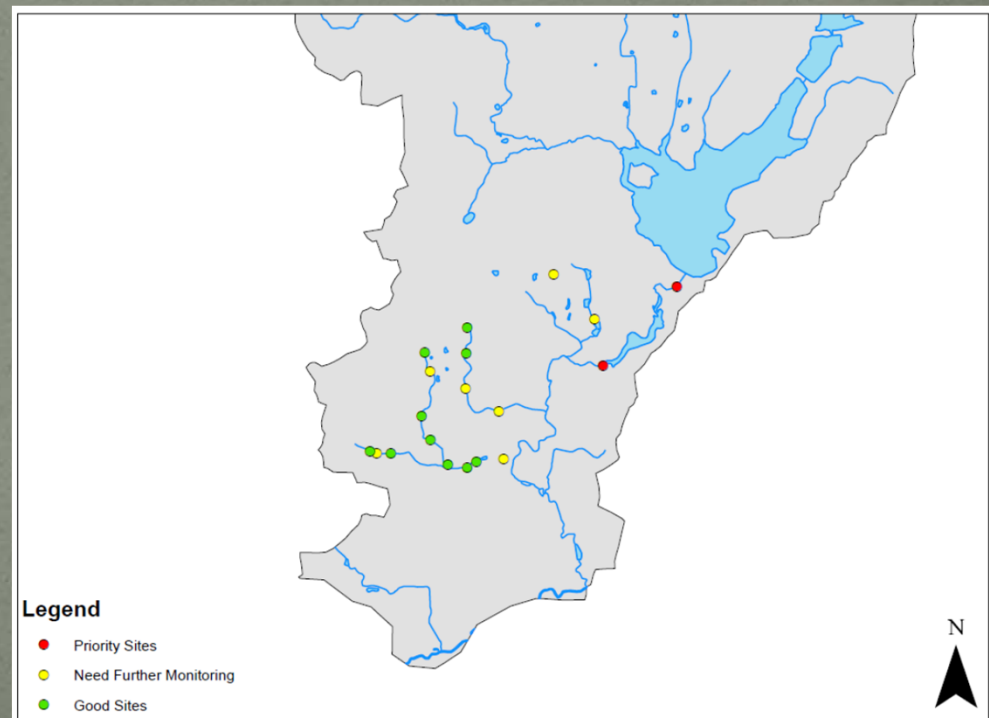
Plan of Attack

- 2 subwatersheds
- GIS – where stream and road layer intersect
- Break sites up into groups that are in clusters (10 – 15 sites)
 - *Assign to teams a cluster at a time*
- Start downstream and work up through watersheds
- Quality Assurance – go out with teams / check data
- Categorize sites as “good”, “needs further monitoring”, or “priority”

- Upper Clinton Subwatershed
 - - 112 total sites identified
 - - 58 completed thus far
 - 83% - “good”
 - 12% - “needing further monitoring”
 - 5% (5) - “priority”



- Stony Creek Subwatershed
 - -112 total sites identified
 - -19 completed thus far
 - 53% - “good”
 - 37% - “needing further monitoring”
 - 10% (2) - “priority”



Priority Site Examples



Perched
Rusted
Scour Pool
Minor Erosion



Crushed
Severe Erosion
Poor Road Condition

Examples cont.



Crushed
Erosion
Heavy sedimentation



Bridge to be replaced soon
Rusted Through
Severe Erosion
Poor Road Condition

Next Steps

- Finish Inventory in 2 subwatersheds
- Expand volunteer program – add more teams
- Sharing data with Road Commission and DNR to further prioritize and identify future projects to look for funding

Lessons learned

- Training – focus on what's important
 - Don't focus on minor details or being very precise
- More follow-up throughout field season
- Difficult for volunteers to get out and complete several sites
 - Utilize most passionate and active volunteers as team leaders
- Interns are a great way to get a large amount of sites completed
 - Win – Win for everyone



THANK YOU

Contact Info:
Matt Einheuser
Watershed Ecologist
Clinton River Watershed Council
1115 W. Avon Rd.
Rochester Hill, MI 48309
248-601-0606
matt@crwc.org

