

# Macatawa Watershed Road-Stream Crossing Inventory Project

---

KELLY GOWARD AND CAROLYN ULSTAD

MACATAWA AREA COORDINATING COUNCIL



# Outline

---

Macatawa Watershed

Pre-Inventory Prep

Accomplishments

Lessons Learned



# Macatawa Watershed

---

2000 TMDL for phosphorus (90% from non-point sources)

Landuse: 46% agriculture, 33% urban, 19% forested/open, 2% water/wetland

Watershed Management Plan updated and approved in 2012

RSX identified as a moderate priority cause of sediment and hydrology impairments

2004 and 2008 BEHI surveys completed – 121 out of ~620 crossings

- 2008: 10% were high risk, 39% were moderate

# Pre-Inventory Prep

---

SCOUTING SITES

EQUIPMENT

VOLUNTEER RECRUITMENT & TRAINING



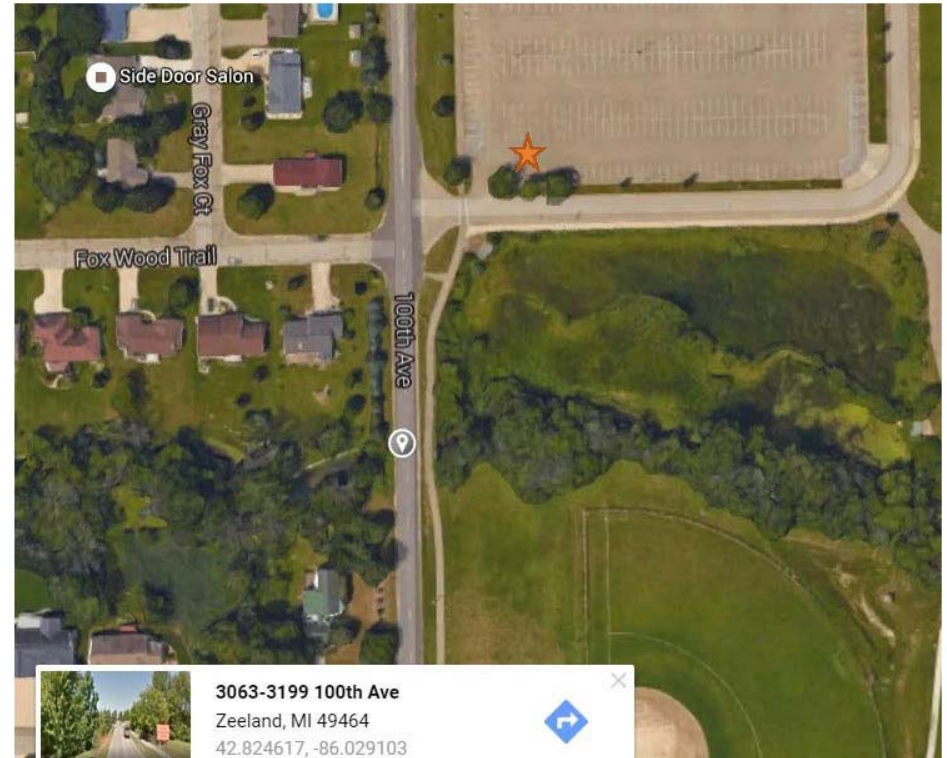
# Scouting Sites

Visited all 55 sites to look for parking and access concerns

Letter to adjacent landowners

Created “fact sheets” for each site

Created [Google Map](#)



**Site ID:** NC-11 (Sec 13, T5N, R15W, Holland Twp)

**Stream:** Brower and No. 39 (regulated)

**Where to park/Traffic Volume**

Recommend parking at West Ottawa School parking lot

Traffic: Moderate

**Site access notes**

East/upstream: Site is accessible

West/downstream: Enter in from side yard

**Conditions/Vegetation**

East/upstream: Steady flow, about 12 feet wide, 1-2 feet deep, vegetated

West/downstream: Steady flow, 2-3 feet deep, about 10 feet wide, Japanese knotweed along roadside

This map shows the Road Stream Crossings that will be inventoried by the MACC and where to park for each site.





943 views

[SHARE](#) [EDIT](#)

**Road Stream Crossing Sites**

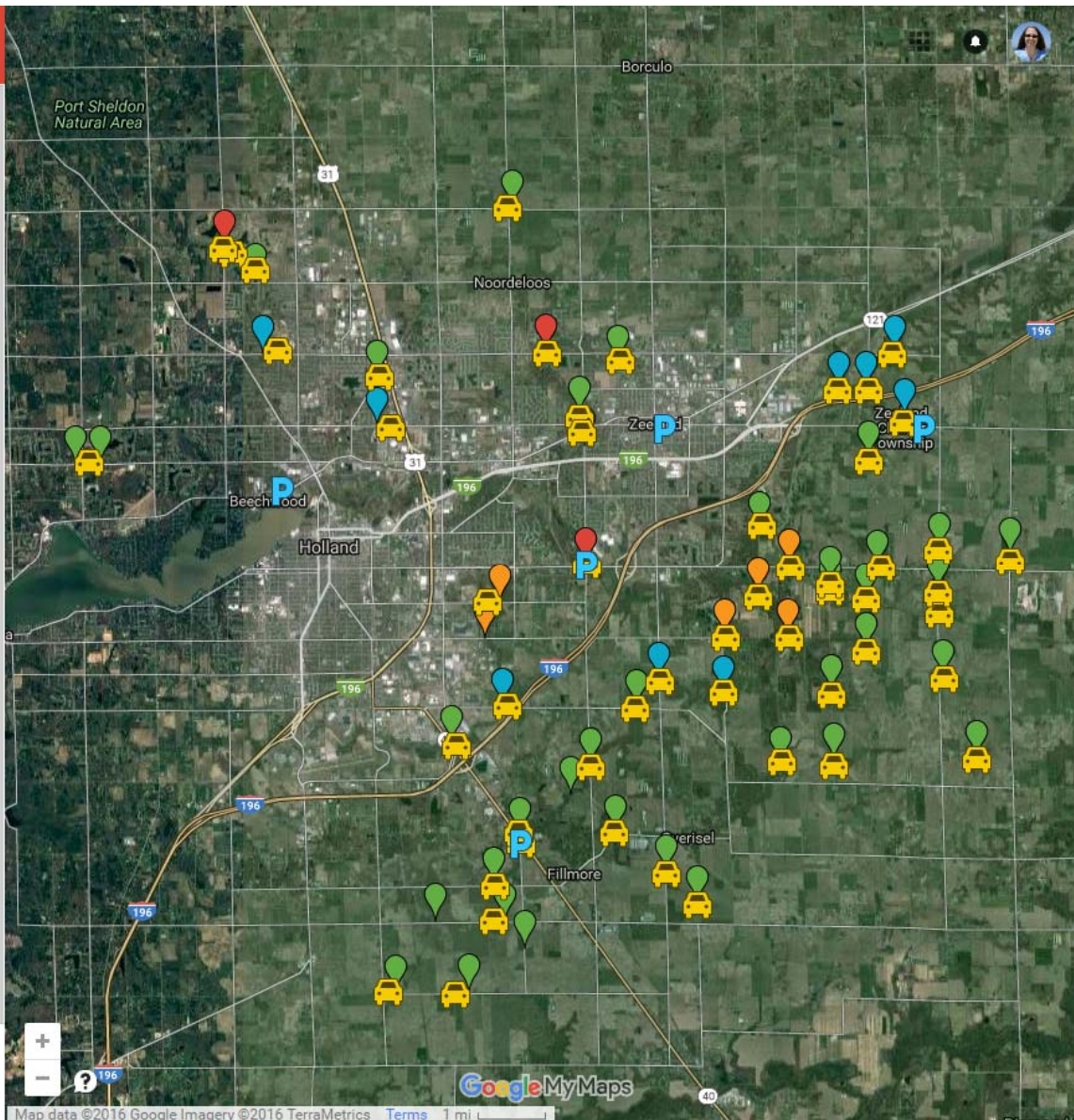
- ▼  NC-05
-  NC-11
-  NC-13
-  NC-15
- ... 52 more

**Parking Location**

- ▼  Parking NC-05
-  Parking NC-11
-  Parking NC-13
-  Parking NC-15
- ... 49 more

**Carpool Locations**

-  Zeeland Township Offices
-  Fillmore Twp Office
-  Adams Street Landing
-  MACC Office
-  Zeeland City Hall



# Equipment

---

Purchased 4 sets

Backpacks to transport

Survey pins

Range finder/pace wheel

Trash bags and gloves

Bug spray and sunscreen

Quick reference guide

Noxious plant fact sheets

Duct tape

Copies of letters/fact sheet





# Volunteers!

Interest and availability survey

18 responses

2 team leaders – 1 engineering professional

GVSU Students – SWCS Chapter

Road Commission and Drain/Water Resource  
Commissioner's staff

Training: July 12

Release and Liability Waiver



# Accomplishments

---

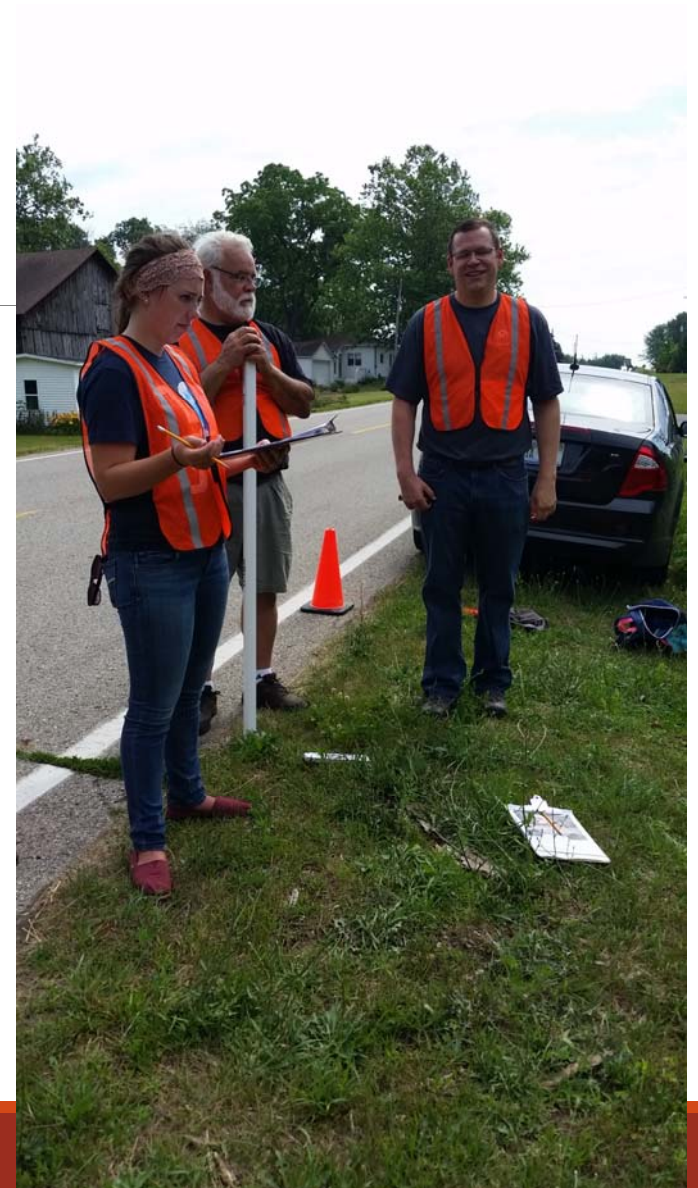
40 of 56 sites completed (56<sup>th</sup> site added by volunteer)

7 events (Saturday AM, weekday AM/PM and evening)

25 unique volunteers (7 repeat)

This winter:

- Data entry
- Plan for remaining 16 sites
- Long-term plan for rest of watershed







Questions?