

## Project Fact Sheet

**Project Name:** Thornapple River Watershed Monitoring Project #3003-VSM2006-03

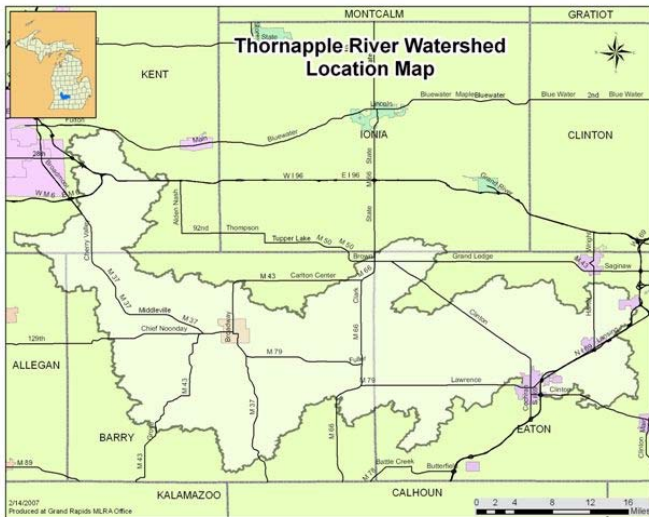
**Project Grant:** \$8435.50      **Matching Funds:** \$5,350.00

**Project Duration:** August 1, 2006 – January 31, 2009

**Project Applicant:** Barry Conservation District, 1611 S. Hanover, Suite 105, Hastings, MI 49058 (269) 948-8056 ext. 3

**Project Contact:** Joanne Barnard  
[joanne.barnard@mi.nacdn.net](mailto:joanne.barnard@mi.nacdn.net)

### Project Location:



Sorting macro collections at Glass Creek



A streamside assistant records data



Documenting RSX points and conditions

### Project Partners:

- Thornapple River Watershed Council
- Thornapple River Watershed Steering Committee
- MSUE - Kellogg Biological Station
- *MDEQ – Grand Rapids*
- *Barry-Eaton District Health Department*
- *Eaton Conservation District*

*Italics – denote new partners*

**Project Summary:**

The purpose of the Thornapple Watershed Monitoring Project is to gather baseline data on water quality and overall watershed health while increasing citizen awareness and interest in the watershed as a natural resource. The goals of the project are:

- 1) Gather data on potential critical areas to provide a valid assessment of the Thornapple River Watershed
- 2) Determine locations where remedial actions will have the most beneficial effects
- 3) Increase public awareness and involvement in watershed and water quality issues
- 4) Establish a trained and committed network of volunteers to conduct an annual monitoring program beyond the scope of the proposed project.



**Sampling with a D-net on Quaker Brook**

**Project Activities, Accomplishments & Measurable Results:**

The scope of the project included completing road-stream crossing surveys on approximately one-third of all crossings in the watershed and conducting macroinvertebrate monitoring on key sites in tributaries throughout the watershed. Development of a trained volunteer base was essential to the success of the project, as was an educational outreach component. Through the course of the project, partnerships were developed and strengthened with four key groups, providing a cohesive network to assure sustainability.

ACTIVITIES	ACCOMPLISHMENTS/RESULTS
Monitoring Activities	165 Road Stream Crossing Surveys 21 Macroinvertebrate Monitoring Sites 62 Macroinvertebrate Samples
Volunteers	12 Trained Surveyors 8 Trained Team Leaders 42 Trained Monitoring Volunteers
Public Outreach	11 Published Press Releases 4 Event Flyers
Education	1 Road Stream Crossing Survey Training Program 2 Team Leader Training Sessions 5 Volunteer Training Sessions 3 Adult Education Presentations 5 K-12 Education Sessions (132 Students)

**General Costs:**

CATEGORY	EXPENDITURE
Staffing & Fringe	\$ 8,757.25
Supplies & Equipment	\$ 2,379.03
Mileage	\$ 533.57
Volunteer Training and Hours	\$ 5,295.00
<b>TOTAL</b>	<b>\$16,964.85</b>



**Maple Valley High students sort macros along Thornapple River**