



101 Main St. Suite 100
Rochester, MI 48307
248.601.0606

michele@crwc.org
jeremy@crwc.org

Adopt-a-Stream
Volunteer River Monitoring Program
Project Fact Sheet

The Clinton River Watershed Council was awarded funding in the amount of \$5,500 to continue and progress its Adopt-a-Stream Volunteer River Monitoring Program. This grant was awarded by the Michigan Clean Water Corps (MiCorps) under the Volunteer Stream Monitoring Program. **Grant #3003-VSM2006-02**

Project Duration:

The MiCorps grant awarded will help fund the program from April 1, 2006 – June 30, 2007.

Project Location:

The Project is throughout the entire Clinton River Watershed. Designated sites are located mainly within the two largest counties of the four that comprise the watershed; Oakland county and Macomb county.

Project Partners:

Partners that have aided the CRWC include: Michigan Clean Water Corps, Macomb Community College, Oakland University, Macomb County Health Department and various communities in the watershed: provide site locales and/or room space for training sessions and workshops.

Project Summary:

CRWC's Adopt-a-Stream project is a volunteer-based program that empowers community members to protect local streams and rivers by monitoring their health. Volunteers are trained in proper stream monitoring protocol, grouped into "Stream Teams" and assigned to a site based on geographic convenience. These teams are supplied with the proper equipment associated with water quality monitoring i.e. waders, D-nets, data sheets, protocols etc. Each team is sent out in May (spring) and October (fall) to gather data and information on streamside habitat and macroinvertebrate populations.

Goals of the project:

1. Educate citizens about water quality concepts and water quality issues in the watershed.
2. Screen for potential water quality problems and improvements throughout the watershed.
3. Increase involvement of citizens in watershed restoration and protection activities.
4. Develop a long-term record of benthic macroinvertebrate communities, habitat quality and basic chemical conditions that can be used by local municipalities and the state in developing and implementing their watershed management plans.



Adopt-a-Stream volunteers suit up for stream monitoring

Project Accomplishments:

- CRWC has established 36 sampling sites throughout the Clinton River Watershed and continues to add more.
- Citizen participation has increased significantly throughout each season giving a total of 165 active volunteers involved in the program.
- Accurate and reliable data has been collected since the beginning of the MiCorps funding. This data for each season is analyzed and applied to baseline trend models. It is electronically stored in the CRWC Database as well as submitted to the MiCorps Database for statewide usage.

General Costs:

The \$5,500 in grant funds were utilized for the necessary materials associated with stream monitoring i.e. waders, nets, macroinvertebrate identification keys, etc. The Clinton River Watershed Council provided local match of 19,688.40 in staff time to facilitate the project



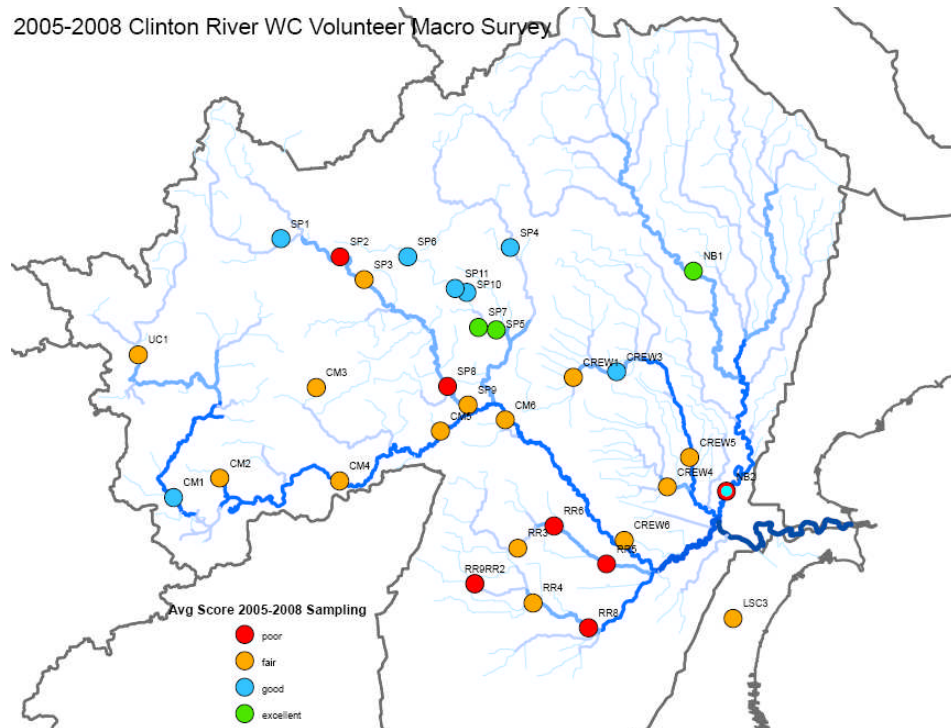
Volunteers checking surfaces of rocks for aquatic



Results Summary:

Reliable and measurable data has been collected throughout the duration of the project. During each monitoring season stream quality scores were calculated based on Macroinvertebrate collection results in compliance with the MiCorps rating system. Data was then submitted to the shared MiCorps database as well as the CRWC's database. The collected data will serve as a baseline for other agencies or organizations who wish to further investigation of any specific area within the watershed.

2005-2008 Clinton River WC Volunteer Macro Survey



Average site scores 2005-2008 Map Courtesy Michigan Dept of Environmental Quality