

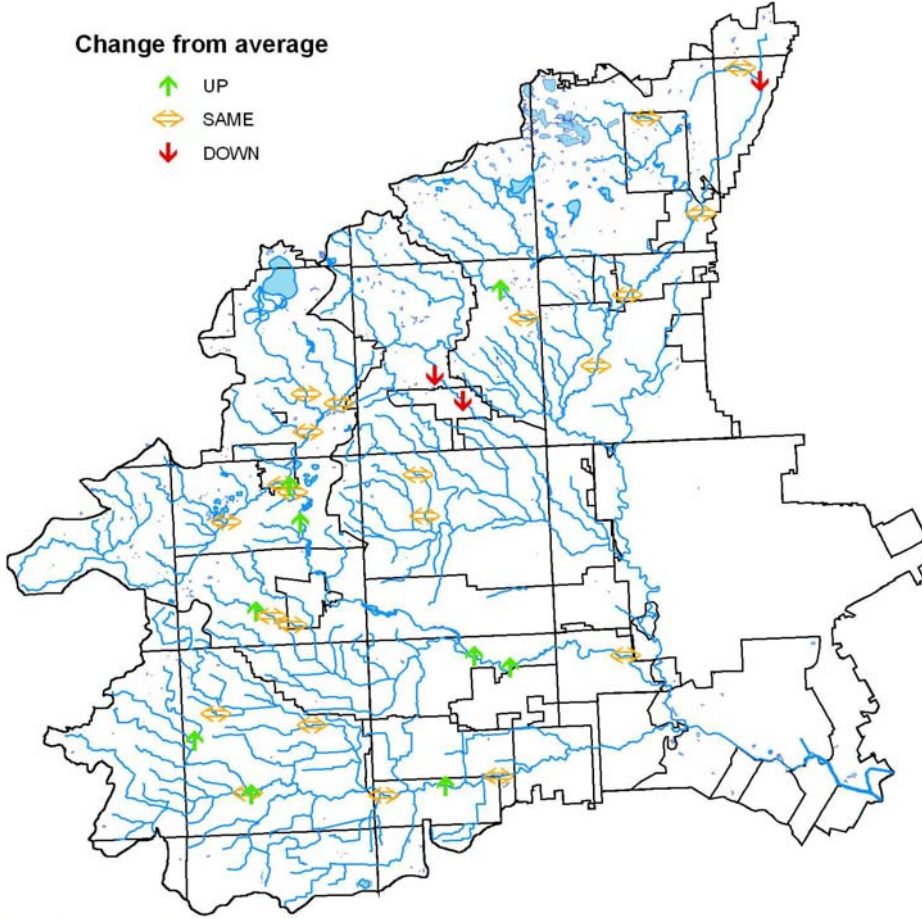
Fact Sheet

- Project name: Friends of the Rouge Benthic Macroinvertebrate Monitoring Program
- Funding: \$15,548 MiCorps / \$17,483 FOTR Match
- Duration: January 2008-June 2008
- Contact: Friends of the Rouge, 4901 Evergreen Road 220 ASC, Dearborn, MI 48128 313-792-9621 Sally Petrella
- Location: Wayne, Oakland and Washtenaw Counties (Rouge River Watershed)
- Partners: University of Michigan-Dearborn, Wayne County Department of the Environment, Schoolcraft College, Michigan Department of Environmental Quality, and Eastern Michigan University.
- Project Summary: The goal of the project is to collect information on benthic macroinvertebrate communities in Rouge headwater streams to screen for problems and track the effect of streambank stabilization projects over time and to increase public awareness of Rouge water quality issues to build support for corrective actions. Through this grant period, FOTR sought to increase the number of trained team leaders and to improve sampling methods.
- Project Accomplishments: Information on benthic macroinvertebrate communities was collected at 23 sites on January 26, 2008 (stoneflies only) with 71 volunteers and at 49 sites on April 26, 2008 with 118 volunteers; habitat information was also collected 4/26. Ten new team leaders were trained on April 13, 2008.
- Monitoring Activities and General Costs: Monitoring is done as an event and sites were monitored for habitat and benthic macroinvertebrates in the spring and for stoneflies only in January. Costs were \$15,548 with the majority spent on staff (\$11,179), equipment and supplies (\$944) and overhead (\$2425). Events were matched with volunteer labor and donated facilities that at \$17,483 more than matched the hard grant dollars.
- Significant measurable results: In January 2008, 9 of 22 sites sampled had winter stoneflies (all Capniidae, one Perlodidae in Johnson Creek) and included sites on the Johnson Creek (6), Fellows Creek, Fowler Creek and one Middle Branch site. In April, 2008, 49 sites were sampled. Sites on the Lower Rouge were all GOOD or FAIR and 3 sites improved. Middle Rouge sites had the only EXCELLENT scores, most ranged GOOD/FAIR, and 5 improved. All but one Main Branch sites scored FAIR, one site improved and one declined. Only five sites were sampled on the Upper Rouge. Of these, four out of five scored POOR and 2 declined. A type of predaceous caddisfly (*Rhyacophila lobifera*) was found for the first time on the Rouge at a Lower branch site and a stonecat (type of catfish) was found for the first time at a Main Branch site.
- Page 2: Map of spring results, monitoring group, caddisfly and stonecat.

Spring Bug Hunt 2008

Change from average

- UP
- SAME
- DOWN



**Friends
of the ROUGE**

0 2.5 5 10 Miles



Trisha Samota & the McCreless family finding numerous bugs at the Johnson Creek. *photo credit: Nancy Samota*



Rhyacophila lobifera



Stonecat