



2019 Data Report for Lake Louise, Dickinson County

Site ID: 220124

45.7495°N, 87.8081°W

The CLMP is brought to you by:



About this report:

This report is a summary of the data that have been collected through the Cooperative Lakes Monitoring Program. The contents have been customized for your lake. The first page is a summary of the Trophic Status Indicators of your lake (Secchi Disk Transparency, Chlorophyll-a, Spring Total Phosphorus, and Summer Total Phosphorus). Where data are available, they have been summarized for the most recent field season, five years prior to the most recent field season, and since the first year your lake has been enrolled in the program.

If you did not take 8 or more Secchi disk measurements or 4 or more chlorophyll measurements, there will not be summary data calculated for these parameters. These numbers of measurements are required to ensure that the results are indicative of overall summer conditions.

If you enrolled in Dissolved Oxygen/Temperature, the summary page will have a graph of one of the profiles taken during the late summer (typically August or September). If your lake stratifies, we will use a graph showing the earliest time of stratification, because identifying the timing of this condition and the depth at which it occurs is typically the most important use of dissolved oxygen measurements.

The back of the summary page will be an explanation of the Trophic Status Index and where your lake fits on that scale.

The rest of the report will be aquatic plant summaries, Score the Shore results, and larger graphs, including all Dissolved Oxygen/Temperature Profiles that you recorded. For Secchi Disk, Chlorophyll, and Phosphorus parameters, you need to have two years of data for a graph to make logical sense. Therefore if this is the first year you have enrolled in the CLMP, you will not receive a graph for these parameters.

Remember that some lakes see a lot of fluctuation in these parameters from year to year. Until you have eight years worth of data, consider all trends to be preliminary.

To learn more about the CLMP monitoring parameters or get definitions to unknown terms, check out the CLMP Manual, found at: <https://micorps.net/wp-content/uploads/sites/63/2019/06/CLMP-Manual-2019update.pdf>

Thank you!

The CLMP leadership team would like to thank you for all of your efforts over the past year. The CLMP would not exist without dedicated and hardworking volunteers!

The CLMP Leadership Team is made of: Marcy Knoll Wilmes, Jean Roth, Jo Latimore, Paul Steen, Mike Gallagher, Laura Kaminski, and Erick Elgin

Questions?

If you have questions on this report or believe that the tabulated data for your lake in this report are in error please contact:

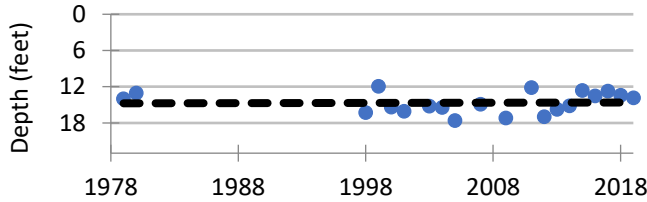
Paul Steen (psteen@hrwc.org), MiCorps Program Manager

Lake Louise, Dickinson County 2019 CLMP Results



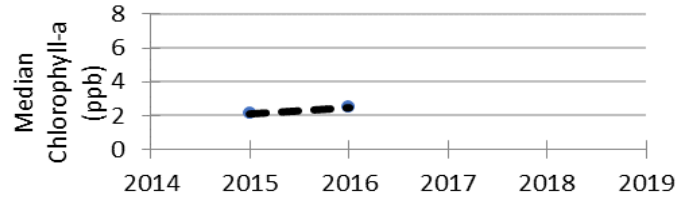
Secchi Disk Transparency (feet)

Year	# Readings	Min	Max	Average	Std. Dev	Carlson TSI
2019	8	12.5	14.5	13.8	0.8	39
2014-2018	85	8.0	19.5	13.8	1.9	40
1979-2013	258	9.5	22.0	15.1	1.8	38
2019 All CLMP Lakes	3392	1.5	50.0	12.8	5.8	42



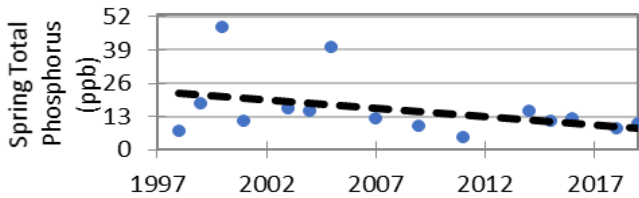
Chlorophyll-a (parts per billion)

Year	# Samples	Min	Max	Median	Std. Dev	Carlson TSI
2016	5	1.5	2.9	2.5	0.6	40
2015	5	1.1	2.9	2.1	0.8	38
2019 All CLMP Lakes	635	< 1.0	42.0	2.2	3.4	39



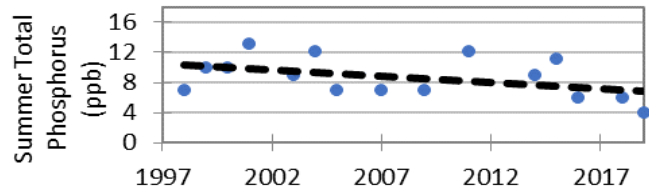
Spring Phosphorus (parts per billion)

Year	# Samples	Min	Max	Average	Std. Dev	Carlson TSI
2019	1	10.0	10.0	10.0	NA	<27
2014-2018	4	8.0	15.0	11.5	2.9	34
1998-2013	10	5.0	48.0	18.1	14.3	36
2019 All CLMP Lakes	220	<= 3	100.0	14.9	11.0	38



Summer Phosphorus (parts per billion)

Year	# Samples	Min	Max	Average	Std. Dev	Carlson TSI
2019	1	<5 T	<5 T	<5 T	NA	<27
2014-2018	4	6.0	11.0	8.0	2.4	34
1998-2013	10	7.0	13.0	9.4	2.4	36
2019 All CLMP Lakes	281	<= 3	65.0	12.8	9.3	38



Dissolved Oxygen and Temperature Profile

This lake does not have recent (within 5 years) dissolved oxygen/water temperature data available. Consider enrolling in this parameter next year. Fish, insects, mollusks, and crustaceans need dissolved oxygen to live in water. By late summer, many lakes stratify, with cold anoxic water on the bottom and warm, oxygen rich water on the surface. Anoxic (oxygen-depleted) water occurring too close to the surface is a sign of nutrient enrichment. Understanding the pattern of dissolved oxygen and water temperature in a lake is important for assessing nutrient problems as well as the health of the biological community.

Summary

Average TSI	2019	2014-2018	1979-2013
Lake Louise	33	37	35
All CLMP Lakes	40	40	43

With an average TSI score of 33 based on 2019 Secchi transparency and summer total phosphorus data, this lake is rated as an oligotrophic lake.

While the trends for individual parameters are mixed, the overall nutrient levels in the lake are largely unchanged since monitoring began.

* = No sample received W= Value is less than the detection limit (<3 ppb) T= Value reported is less than the reporting limit (5 ppb).
<1.0 = Chlorophyll-a: Sample value is less than limit of quantification (<1 ppb).

Trophic Status Index Explained

In 1977, limnologist Dr. Robert Carlson developed a numerical scale (0-100) where the numbers indicate the level of nutrient enrichment. Using the proper equations, we can convert results from Summer Total Phosphorus, Secchi Depth, and Chlorophyll-a to this Trophic Status Index (TSI). The TSI numbers are furthermore grouped into general categories (oligotrophic, mesotrophic, eutrophic, and hypereutrophic), to quickly give us a way to understand the general nutrient level of any lake.

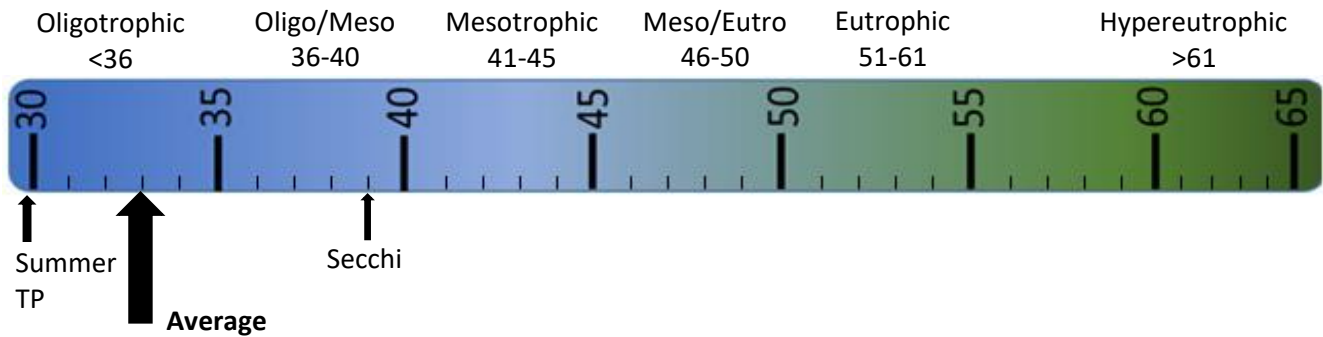
The tables below give the results-to-TSI conversions for the water quality data ranges normally seen in the CLMP. The formulas for this conversion can be found in the CLMP manual: <https://micorps.net/wp-content/uploads/sites/63/2019/06/CLMP-Manual-2019update.pdf>

Phosphorus (ppb)	TSI Value
<5	<27
6	30
8	34
10	37
12	40
15	43
18	46
21	48
24	50
32	54
36	56
42	58
48	60
>50	>61

Secchi Depth (ft)	TSI Value
>30	<28
25	31
20	34
15	38
12	42
10	44
7.5	48
6	52
4	57
<3	>61

Chlorophyll-a (ppb)	TSI Value
<1	<31
2	37
3	41
4	44
6	48
8	51
12	55
16	58
22	61
>22	>61

TSI for Lake Louise in 2019	
Average	33
Secchi Disk	39
Summer TP	<27
Chlorophyll-a	



Oligotrophic: Generally deep and clear lakes with little aquatic plant or algae growth. These lakes maintain sufficient dissolved oxygen in the cool, deep-bottom waters during late summer to support cold water fish, such as trout and whitefish.

Mesotrophic: Lakes that fall between oligotrophic and eutrophic. Mid-ranged amounts of nutrients.

Eutrophic: Highly productive eutrophic lakes are generally shallow, turbid, and support abundant aquatic plant growth. In deep eutrophic lakes, the cool bottom waters usually contain little or no dissolved oxygen. Therefore, these lakes can only support warm water fish, such as bass and pike.

Hypereutrophic: A specialized category of eutrophic lakes. These lakes exhibit extremely high productivity, such as nuisance algae and weed growth.



Lake Louise, Dickinson County

2015 Aquatic Plant Identification and Mapping

The Aquatic Plant Identification and Mapping survey was conducted on Lake Louise in 2015.

This survey involves intensive sampling at multiple locations and depths around the lake to produce a complete map of all aquatic plants present in a lake. A great deal of effort is involved both on the lake and back on shore to identify plants, compile data, and develop a detailed plant map, but the result is an extremely valuable record of the plant community of the lake.

Aquatic plants were sampled along 15 transects in Lake Louise in 2015. Below is a list of species reported, including the number of observations and average lakewide density on a scale of 0 (absent) to 4 (dense).

Common Name	Scientific Name	ID Code	Total # of Observations	Average Density
Eurasian or Hybrid Watermilfoil	<i>Myriophyllum spicatum</i> ; <i>Myriophyllum spicatum</i> X <i>M. sibiricum</i>	50	5	0.139534884
Water Marigold	<i>Bidens beckii</i>	47	2	0.069767442
Coontail	<i>Ceratophyllum demersum</i>	41	2	0.046511628
Chara	<i>Chara spp.</i>	20	34	2
Common Waterweed	<i>Elodea canadensis</i>	36	5	0.139534884
Native Watermilfoils	<i>Myriophyllum spp.</i>	40	17	0.76744186
Slender Naiad	<i>Najas flexilis</i>	21	7	0.279069767
Nitella	<i>Nitella spp.</i>	39	5	0.186046512
Yellow Pond Lily	<i>Nuphar spp.</i>	13	10	0.418604651
White Water Lily	<i>Nymphaea odorata</i>	12	1	0.046511628
Illinois Pondweed	<i>Potamogeton illinoensis</i>	46	20	0.813953488
Floating-leaf Pondweed	<i>Potamogeton natans</i>	43	2	0.11627907
White-stem Pondweed	<i>Potamogeton praelongus</i>	44	4	0.209302326
Fern Pondweed	<i>Potamogeton robbinsii</i>	22	5	0.162790698
Stiff Pondweed	<i>Potamogeton strictifolius</i>	38	6	0.162790698
Flat-stem Pondweed	<i>Potamogeton zosteriformis</i>	33	8	0.209302326
Water Bulrush	<i>Schoenoplectus subterminalis</i>	7B	7	0.325581395
Soft-stem Bulrush	<i>Schoenoplectus tabernaemontani</i>	7	6	0.255813953
Sago Pondweed	<i>Stuckenia pectinata</i>	52	2	0.069767442
Small Bladderwort	<i>Utricularia minor</i>	48B	17	0.76744186
Common Bladderwort	<i>Utricularia vulgaris</i>	48	12	0.488372093
Wild Celery	<i>Vallisneria americana</i>	34	2	0.069767442

Visit the MiCorps Data Exchange (www.micorps.net) or contact the lead volunteer on the lake for more details on the survey, including sampling locations, maps, and abundance information, and for information on past surveys.

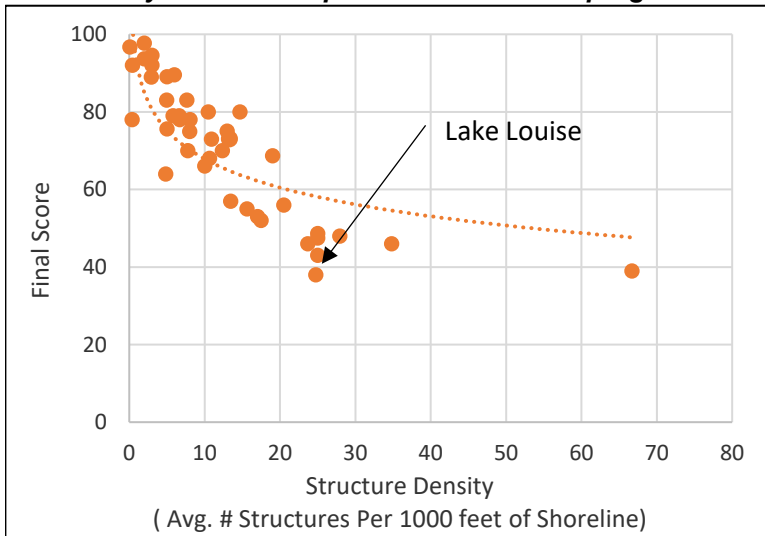
Lake Louise, Dickinson County 2016 Score the Shore Results



The Score the Shore Habitat Assessment was conducted on Lake Louise in 2016.

This assessment involves rating 1000 foot sections of shoreline for aquatic vegetation, shoreline vegetation, erosion, and erosion control practices (like sea walls). Each shoreline section is given three scores ranging from 0-100 for the categories of Littoral, Riparian, and Erosion Management. The three scores are averaged to produce a average section score. Then a total score is given to the entire lake by averaging all of the average section scores. A score of 0 indicates a shoreline that has been extremely disturbed by human impacts and no natural shoreline remains. A score of 100 indicates a shoreline that is nearly pristine.

How does your lake compare to others in the program?



Lake Louise:	
Number of Sections:	8
Number of Structures:	198
Structure Density:	24.8
Final Score:	38

All 42 Participating Lakes from 2015-2018:	
Avg. Number of Sections:	16.3
Avg. Number of Structures:	248.5
Avg. Structure Density:	15.2
Avg. Final Score:	70.5

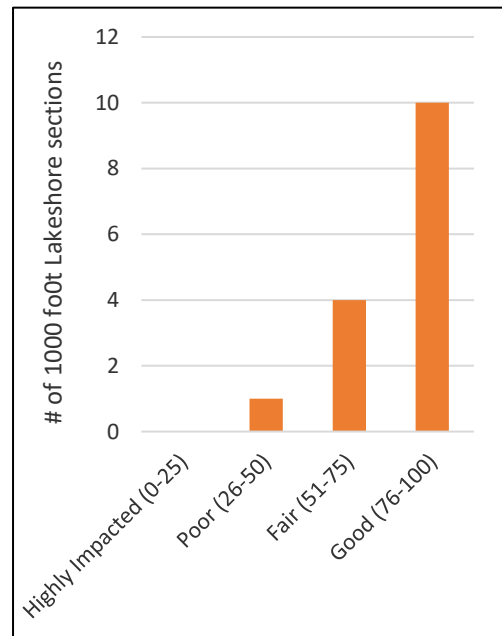
There is a very tight relationship between Final Score and Structure Density. It will be interesting to see if and how this changes as more lakes go through this scoring process.

Analysis specific to Lake Louise:

Overall, the lakeshore habitat of Lake Louise is below average when compared to the other lakes in the program. All of the lake sections scored "Poor."

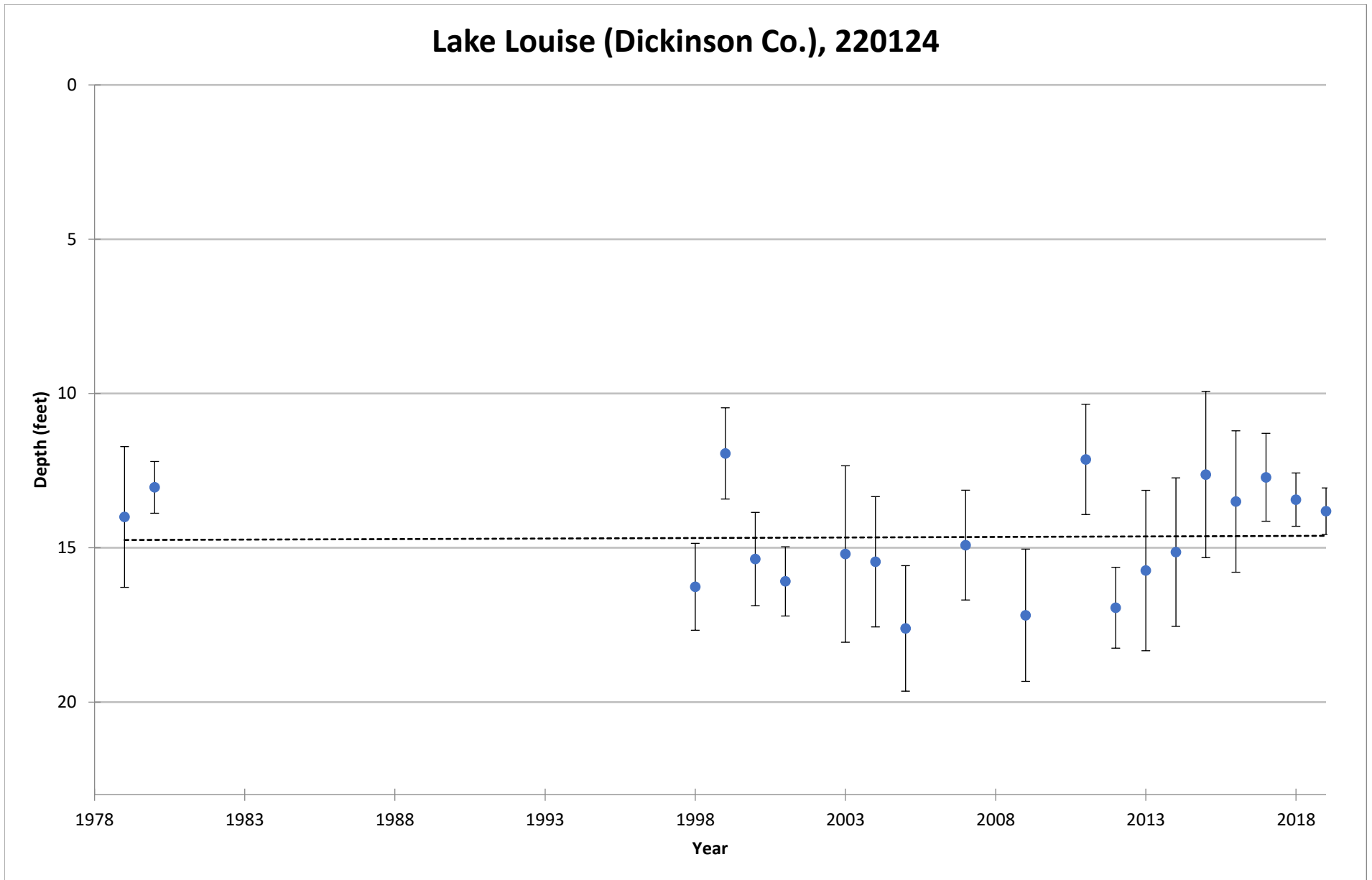
This Lake scored strongest in the littoral score, meaning that (in general) erosion was only moderate, fallen trees were present, and aquatic vegetation was present but not abundant.

To improve scores, residents should work on all three categories. Keep native plants in the shallows, allow unvegetated areas to grow on the shoreline, and remove sea wall whenever possible.



COOPERATIVE LAKES MONITORING PROGRAM
SUMMER MEAN TRANSPARENCY

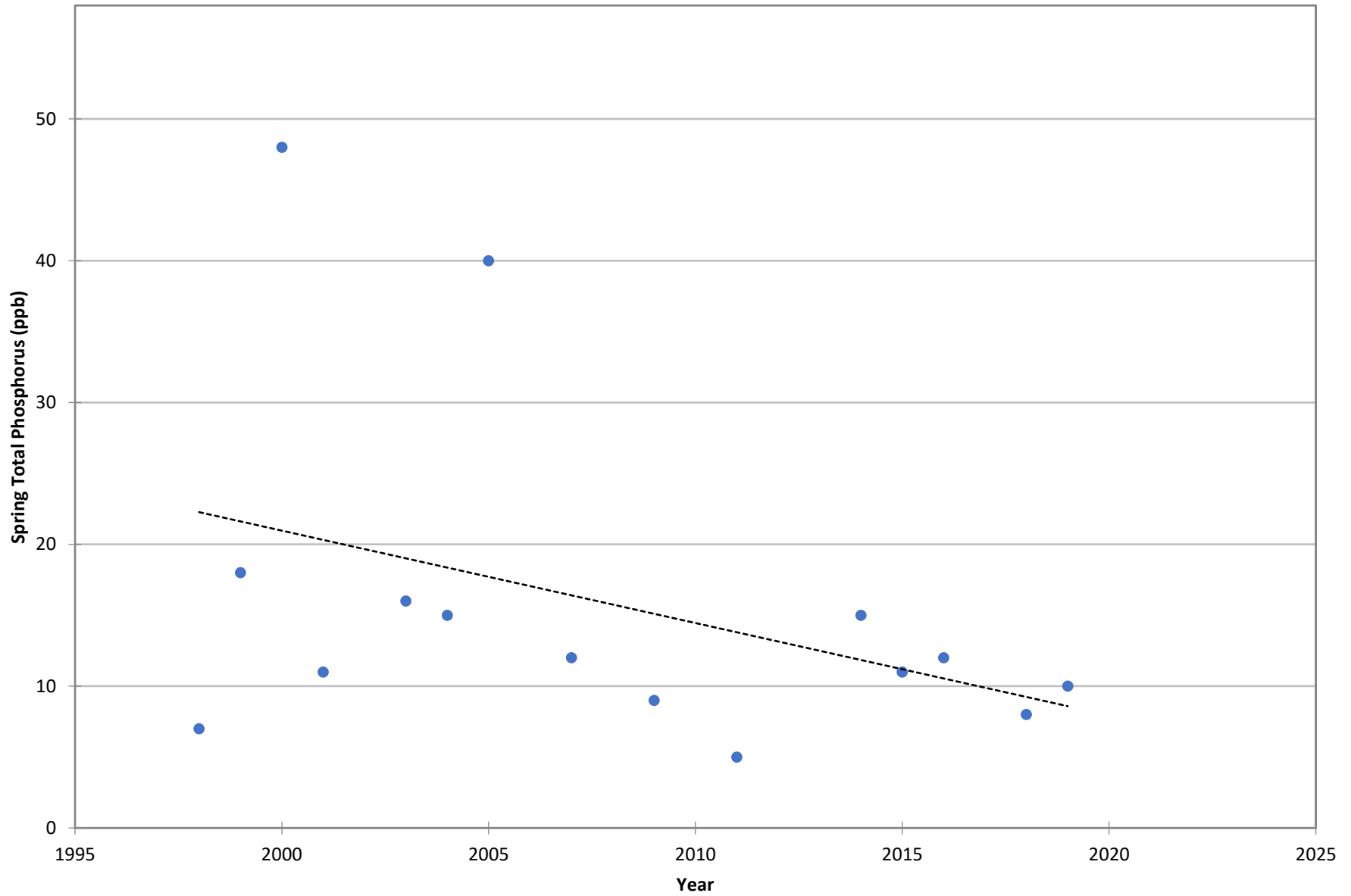
Lake Louise (Dickinson Co.), 220124



Vertical bars indicate standard deviation

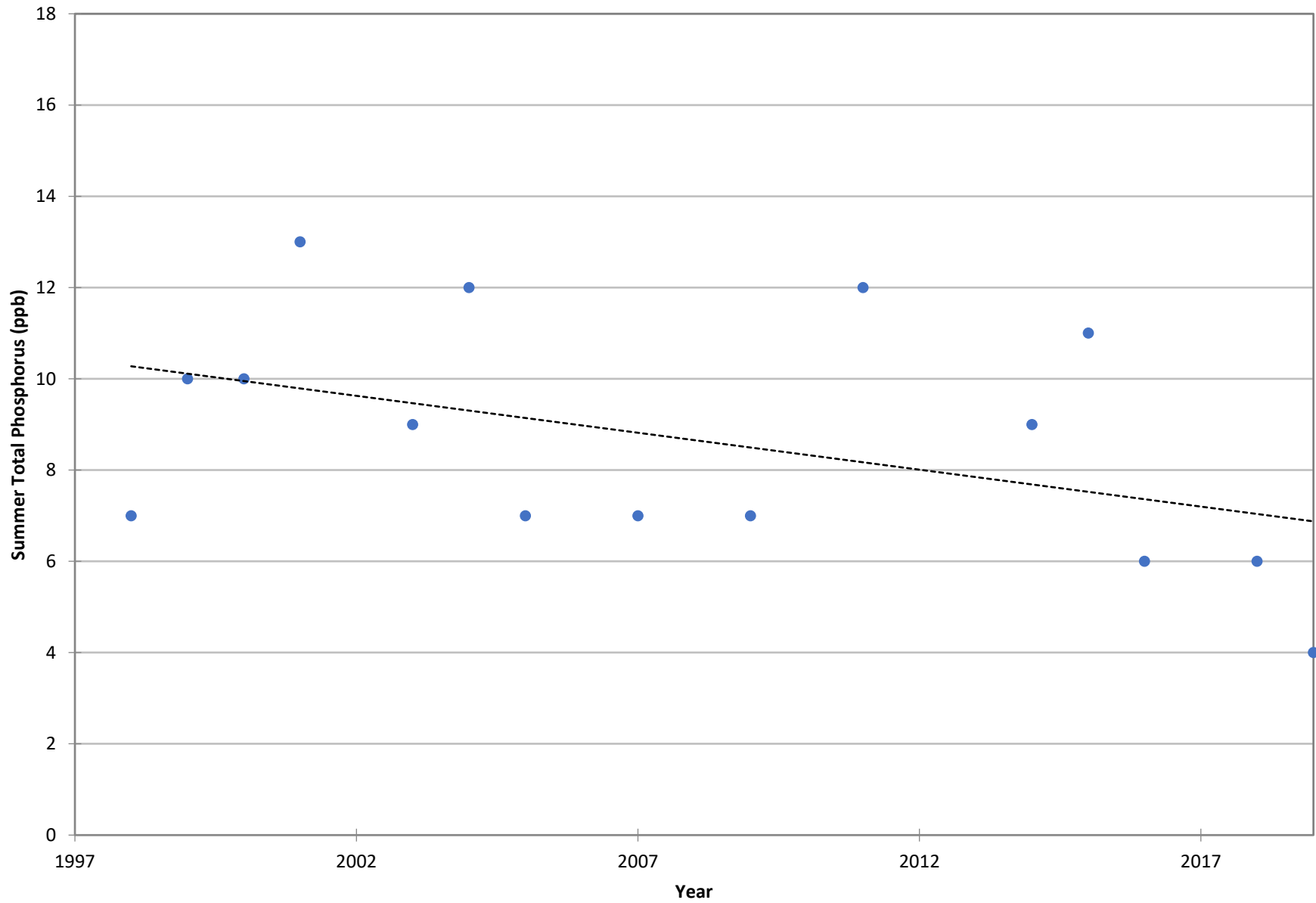
COOPERATIVE LAKES MONITORING PROGRAM
SPRING TOTAL PHOSPHORUS

Lake Louise (Dickinson Co.), 220124



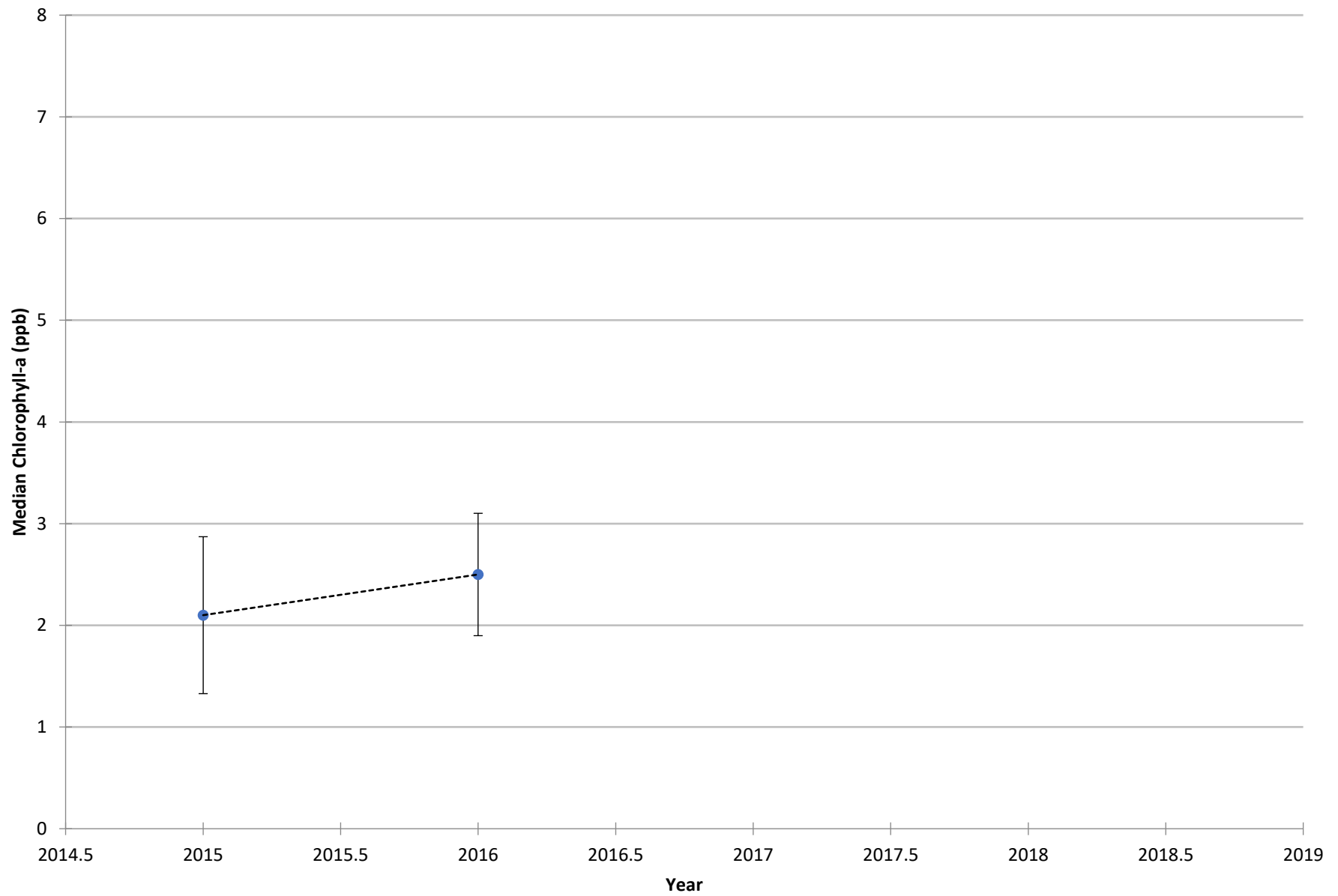
COOPERATIVE LAKES MONITORING PROGRAM
SUMMER TOTAL PHOSPHORUS

Lake Louise (Dickinson Co.), 220124



COOPERATIVE LAKES MONITORING PROGRAM
SUMMER MEDIAN CHLOROPHYLL-A

Lake Louise (Dickinson Co.), 220124



Vertical bars indicate standard deviation