



2019 Data Report for Crockery Lake, Ottawa County

Site ID: 700422

43.1686°N, 85.8514°W

The CLMP is brought to you by:



About this report:

This report is a summary of the data that have been collected through the Cooperative Lakes Monitoring Program. The contents have been customized for your lake. The first page is a summary of the Trophic Status Indicators of your lake (Secchi Disk Transparency, Chlorophyll-a, Spring Total Phosphorus, and Summer Total Phosphorus). Where data are available, they have been summarized for the most recent field season, five years prior to the most recent field season, and since the first year your lake has been enrolled in the program.

If you did not take 8 or more Secchi disk measurements or 4 or more chlorophyll measurements, there will not be summary data calculated for these parameters. These numbers of measurements are required to ensure that the results are indicative of overall summer conditions.

If you enrolled in Dissolved Oxygen/Temperature, the summary page will have a graph of one of the profiles taken during the late summer (typically August or September). If your lake stratifies, we will use a graph showing the earliest time of stratification, because identifying the timing of this condition and the depth at which it occurs is typically the most important use of dissolved oxygen measurements.

The back of the summary page will be an explanation of the Trophic Status Index and where your lake fits on that scale.

The rest of the report will be aquatic plant summaries, Score the Shore results, and larger graphs, including all Dissolved Oxygen/Temperature Profiles that you recorded. For Secchi Disk, Chlorophyll, and Phosphorus parameters, you need to have two years of data for a graph to make logical sense. Therefore if this is the first year you have enrolled in the CLMP, you will not receive a graph for these parameters.

Remember that some lakes see a lot of fluctuation in these parameters from year to year. Until you have eight years worth of data, consider all trends to be preliminary.

To learn more about the CLMP monitoring parameters or get definitions to unknown terms, check out the CLMP Manual, found at: <https://micorps.net/wp-content/uploads/sites/63/2019/06/CLMP-Manual-2019update.pdf>

Thank you!

The CLMP leadership team would like to thank you for all of your efforts over the past year. The CLMP would not exist without dedicated and hardworking volunteers!

The CLMP Leadership Team is made of: Marcy Knoll Wilmes, Jean Roth, Jo Latimore, Paul Steen, Mike Gallagher, Laura Kaminski, and Erick Elgin

Questions?

If you have questions on this report or believe that the tabulated data for your lake in this report are in error please contact:

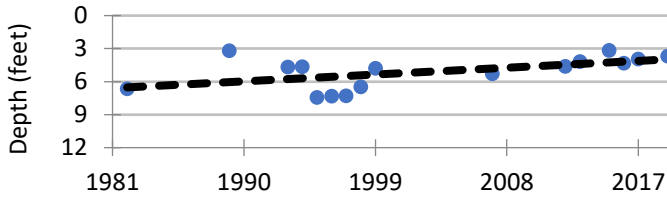
Paul Steen (psteen@hrwc.org), MiCorps Program Manager

Crockery Lake, Ottawa County 2019 CLMP Results



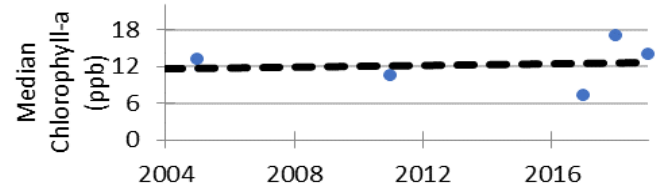
Secchi Disk Transparency (feet)

Year	# Readings	Min	Max	Average	Std. Dev	Carlson TSI
2019	15	1.5	7.5	3.7	1.4	58
2014-2018	40	1.5	7.0	3.7	1.1	58
1982-2013	212	0.3	15.0	5.5	2.0	53
2019 All CLMP Lakes	3392	1.5	50.0	12.8	5.8	42



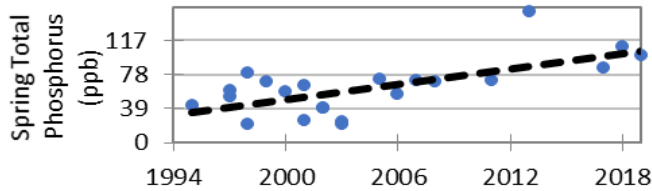
Chlorophyll-a (parts per billion)

Year	# Samples	Min	Max	Median	Std. Dev	Carlson TSI
2019	5	5.0	31.0	14.0	9.9	56
2014-2018	14	5.0	100.0	12.1	6.0	54
2001-2013	19	2.0	61.0	12.1	20.0	55
2019 All CLMP Lakes	635	< 1.0	42.0	2.2	3.4	39



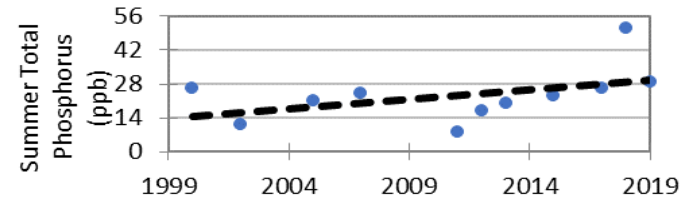
Spring Phosphorus (parts per billion)

Year	# Samples	Min	Max	Average	Std. Dev
2019	1	100.0	100.0	100.0	NA
2014-2018	2	85.0	110.0	97.5	17.7
1995-2013	19	21.0	150.0	57.2	29.5
2019 All CLMP Lakes	220	<= 3	100.0	14.9	11.0



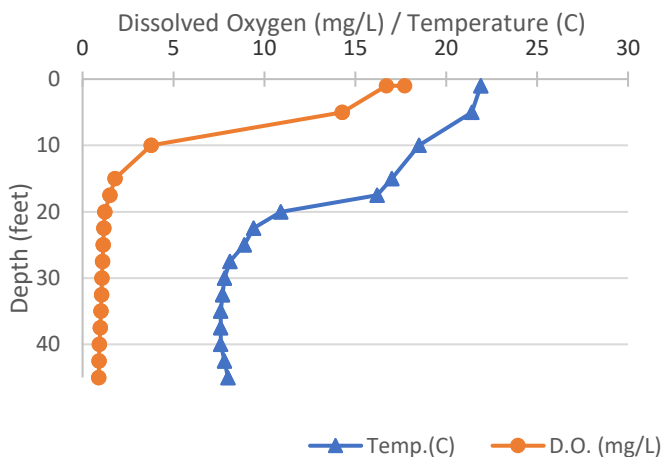
Summer Phosphorus (parts per billion)

Year	# Samples	Min	Max	Average	Std. Dev	Carlson TSI
2019	1	29.0	29.0	29.0	NA	53
2014-2018	3	23.0	51.0	33.3	15.4	54
2000-2013	7	8.0	26.0	18.1	6.6	45
2019 All CLMP Lakes	281	<= 3	65.0	12.8	9.3	38



Dissolved Oxygen and Temperature Profile

6/24/2019



Summary

Average TSI	2019	2014-2018	1982-2013
Crockery Lake	56	55	51
All CLMP Lakes	40	40	42

With an average TSI score of 56 based on 2019 Secchi transparency, chlorophyll-a, and summer total phosphorus data, this lake is rated as eutrophic.

The lake keeps some dissolved oxygen in the bottom waters through spring, but by early summer the lake has stratified and the bottom water is devoid of oxygen.

Long term monitoring shows slight upward slopes on all of the parameters, indicating a very slow movement toward higher nutrient levels in the lake.

* = No sample received W= Value is less than the detection limit (<3 ppb) T= Value reported is less than the reporting limit (5 ppb).

<1.0 = Chlorophyll-a: Sample value is less than limit of quantification (<1 ppb).

Trophic Status Index Explained

In 1977, limnologist Dr. Robert Carlson developed a numerical scale (0-100) where the numbers indicate the level of nutrient enrichment. Using the proper equations, we can convert results from Summer Total Phosphorus, Secchi Depth, and Chlorophyll-a to this Trophic Status Index (TSI). The TSI numbers are furthermore grouped into general categories (oligotrophic, mesotrophic, eutrophic, and hypereutrophic), to quickly give us a way to understand the general nutrient level of any lake.

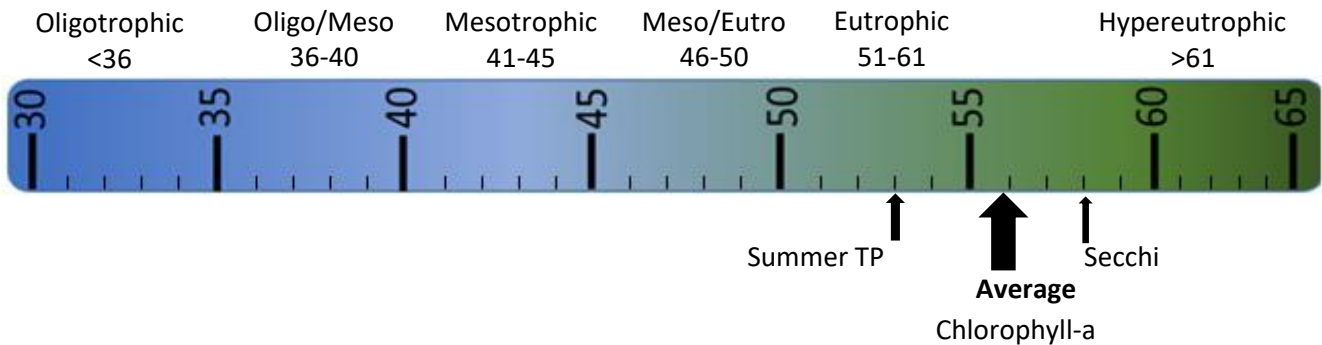
The tables below give the results-to-TSI conversions for the water quality data ranges normally seen in the CLMP. The formulas for this conversion can be found in the CLMP manual: <https://micorps.net/wp-content/uploads/sites/63/2019/06/CLMP-Manual-2019update.pdf>

Phosphorus (ppb)	TSI Value
<5	<27
6	30
8	34
10	37
12	40
15	43
18	46
21	48
24	50
32	54
36	56
42	58
48	60
>50	>61

Secchi Depth (ft)	TSI Value
>30	<28
25	31
20	34
15	38
12	42
10	44
7.5	48
6	52
4	57
<3	>61

Chlorophyll-a (ppb)	TSI Value
<1	<31
2	37
3	41
4	44
6	48
8	51
12	55
16	58
22	61
>22	>61

TSI for Crockery Lake in 2019	
Average	56
Secchi Disk	58
Summer TP	53
Chlorophyll-a	56



Oligotrophic: Generally deep and clear lakes with little aquatic plant or algae growth. These lakes maintain sufficient dissolved oxygen in the cool, deep-bottom waters during late summer to support cold water fish, such as trout and whitefish.

Mesotrophic: Lakes that fall between oligotrophic and eutrophic. Mid-ranged amounts of nutrients.

Eutrophic: Highly productive eutrophic lakes are generally shallow, turbid, and support abundant aquatic plant growth. In deep eutrophic lakes, the cool bottom waters usually contain little or no dissolved oxygen. Therefore, these lakes can only support warm water fish, such as bass and pike.

Hypereutrophic: A specialized category of eutrophic lakes. These lakes exhibit extremely high productivity, such as nuisance algae and weed growth.

Crockery Lake, Ottawa County 2019 CLMP Aquatic Plant Results



Crockery Lake does not have aquatic plant data available for 2019. Consider enrolling in an aquatic plant parameter next year.

Why is monitoring aquatic plants important?

A major component of the plant community in lakes is the large, leafy, rooted plants. Compared to the microscopic algae the rooted plants are large. Sometimes they are collectively called the “macrophytes” (“macro” meaning large and “phyte” meaning plant). These macrophytes are the plants that people sometimes complain about and refer to as lake weeds.

Far from being weeds, macrophytes or rooted aquatic plants are a natural and essential part of the lake, just as grasses, shrubs and trees are a natural part of the land. Their roots are a fabric for holding sediments in place, reducing erosion and maintaining bottom stability. They provide habitat for fish, including structure for food organisms, nursery areas, foraging and predator avoidance. Waterfowl, shore birds and aquatic mammals use plants to forage on and within, and as nesting materials and cover.

Though plants are important to the lake, overabundant plants can negatively affect fish populations, fishing and other recreational activities. Rooted plant populations increase in abundance as nutrient concentrations increase in the lake. As lakes become more eutrophic rooted plant populations increase. They are rarely a problem in oligotrophic lakes, only occasionally a problem in mesotrophic lakes, sometimes a problem in eutrophic lakes, and often a problem in hypereutrophic lakes.

However, sometimes a lake is invaded by an aquatic plant species that is not native to Michigan. In these cases, even nutrient poor oligotrophic lakes can be threatened. Some of these exotic plants, like Curly-leaf Pondweed, Eurasian Milfoil, Starry Stonewort, and Hydrilla can be extremely disruptive to the lake’s ecosystem and recreational activities.

To avoid a takeover by exotic plants, it is necessary to use Integrated Pest Management (IPM) strategies: monitoring, early detection, rapid response, maintenance control, and preventive management. For more information on these strategies, check out Integrated Pest Management for Nuisance Exotics in Michigan Inland Lakes (MSU Extension Water Quality Publication WQ-56, available at <https://micorps.net/lake-monitoring/clmp-documents/>)

The CLMP offers two parameters on aquatic plants. In the Exotic Aquatic Plant Watch, volunteers concentrate on monitoring and early detection of exotic invasive plants only. In Aquatic Plant Identification and Mapping, volunteers identify all native and non-native plants. In both parameters, volunteers create lake maps or use digital tools to georeference where the plants are found.

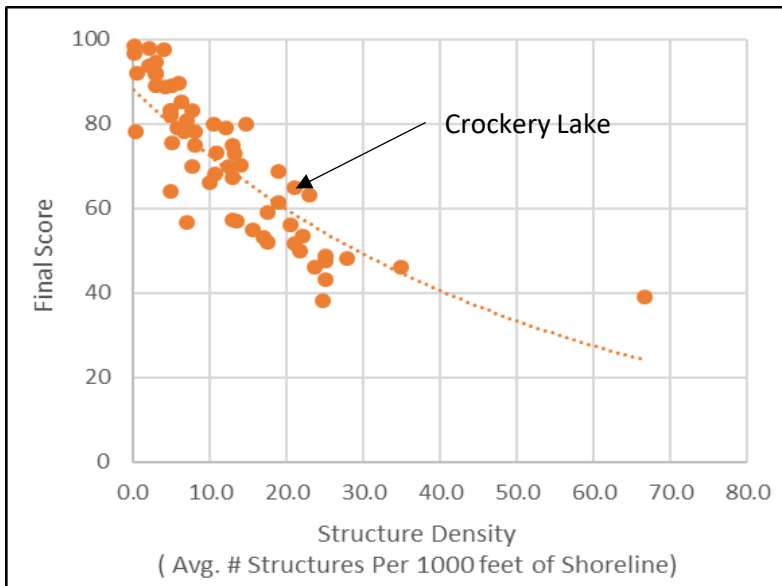
Crockery Lake, Ottawa County 2019 Score the Shore Results



The Score the Shore Habitat Assessment was conducted on Crockery Lake in 2019.

This assessment involves rating 1000 foot sections of shoreline for aquatic vegetation, shoreline vegetation, erosion, and erosion control practices (like sea walls). Each shoreline section is given three scores ranging from 0-100 for the categories of Littoral, Riparian, and Erosion Management. The three scores are averaged to produce a average section score. Then a total score is given to the entire lake by averaging all of the average section scores. A score of 0 indicates a shoreline that has been extremely disturbed by human impacts and no natural shoreline remains. A score of 100 indicates a shoreline that is nearly pristine.

How does your lake compare to others in the program?



Crockery Lake:	
Number of Sections:	8
Number of Structures:	187
Structure Density:	23
Final Score:	63

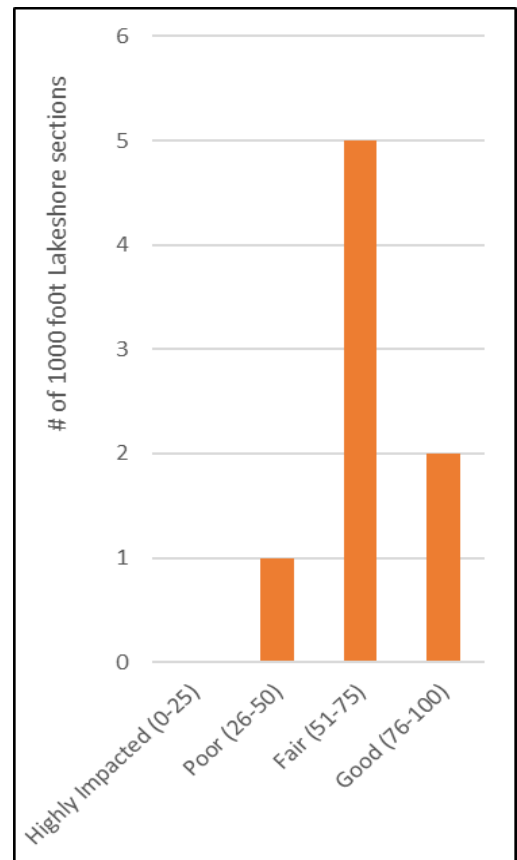
All 42 Participating Lakes from 2015-2019:	
Avg. Number of Sections:	16
Avg. Number of Structures:	226
Avg. Structure Density:	12.5
Avg. Final Score:	71.1

Analysis specific to Crockery Lake:

Overall, the lakeshore habitat of Crockery Lake scored lower when average when compared to other lakes in the program, but probably scored exactly as expected considering the amount of development along the shores.

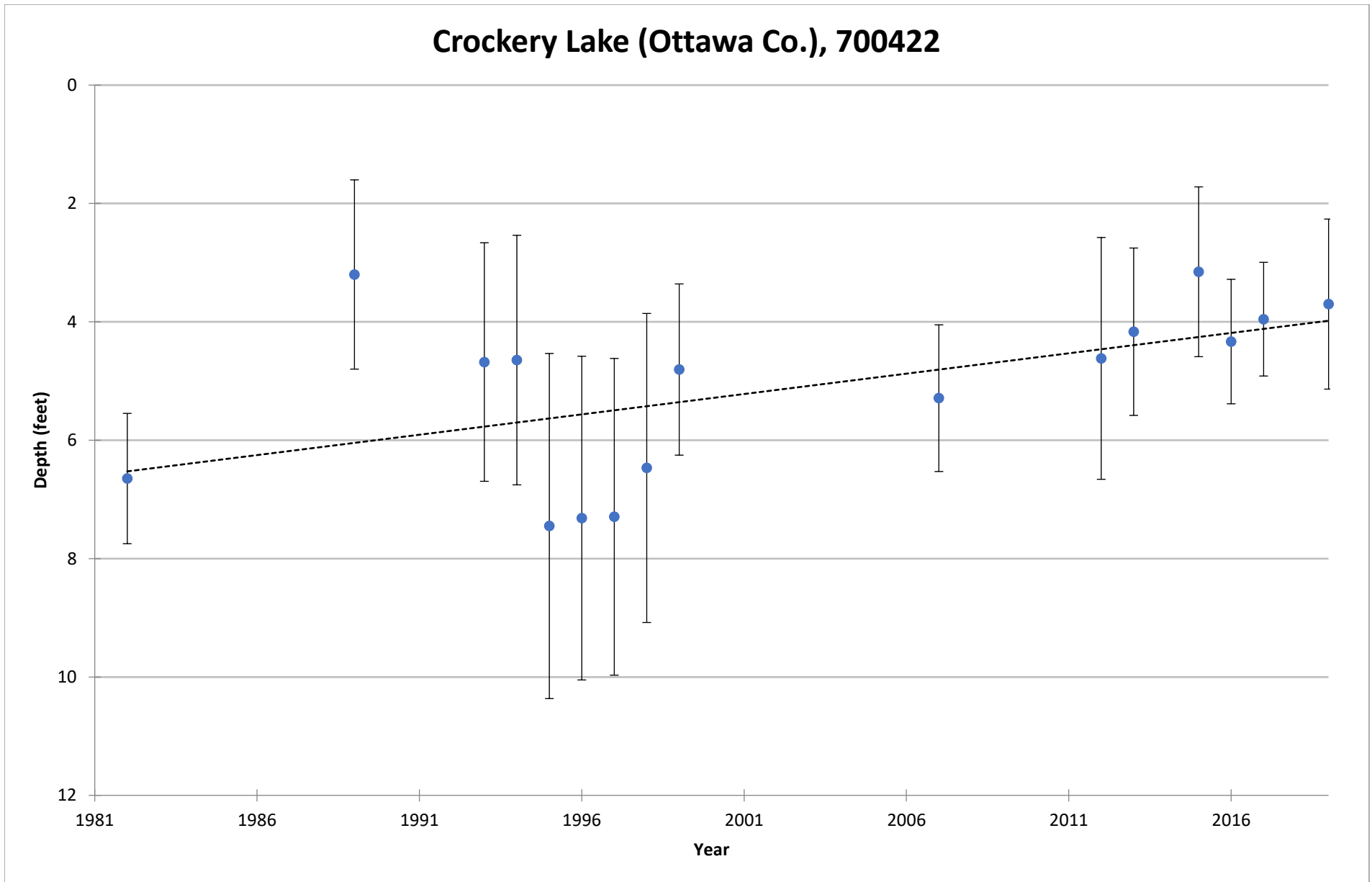
The lake sections scored highest for erosion control, with an average of 78, meaning that there are a low amount of sea walls, rock rip-rap, and other shoreline erosion structures.

The riparian zone was the weak point in Crockery's score (scoring an average of 46). There is certainly room for improvement; reduce the amount of mowed grass and increase the amount of unmowed native vegetation along the lakeshore to boost this aspect of the shoreline habitat.



COOPERATIVE LAKES MONITORING PROGRAM
SUMMER MEAN TRANSPARENCY

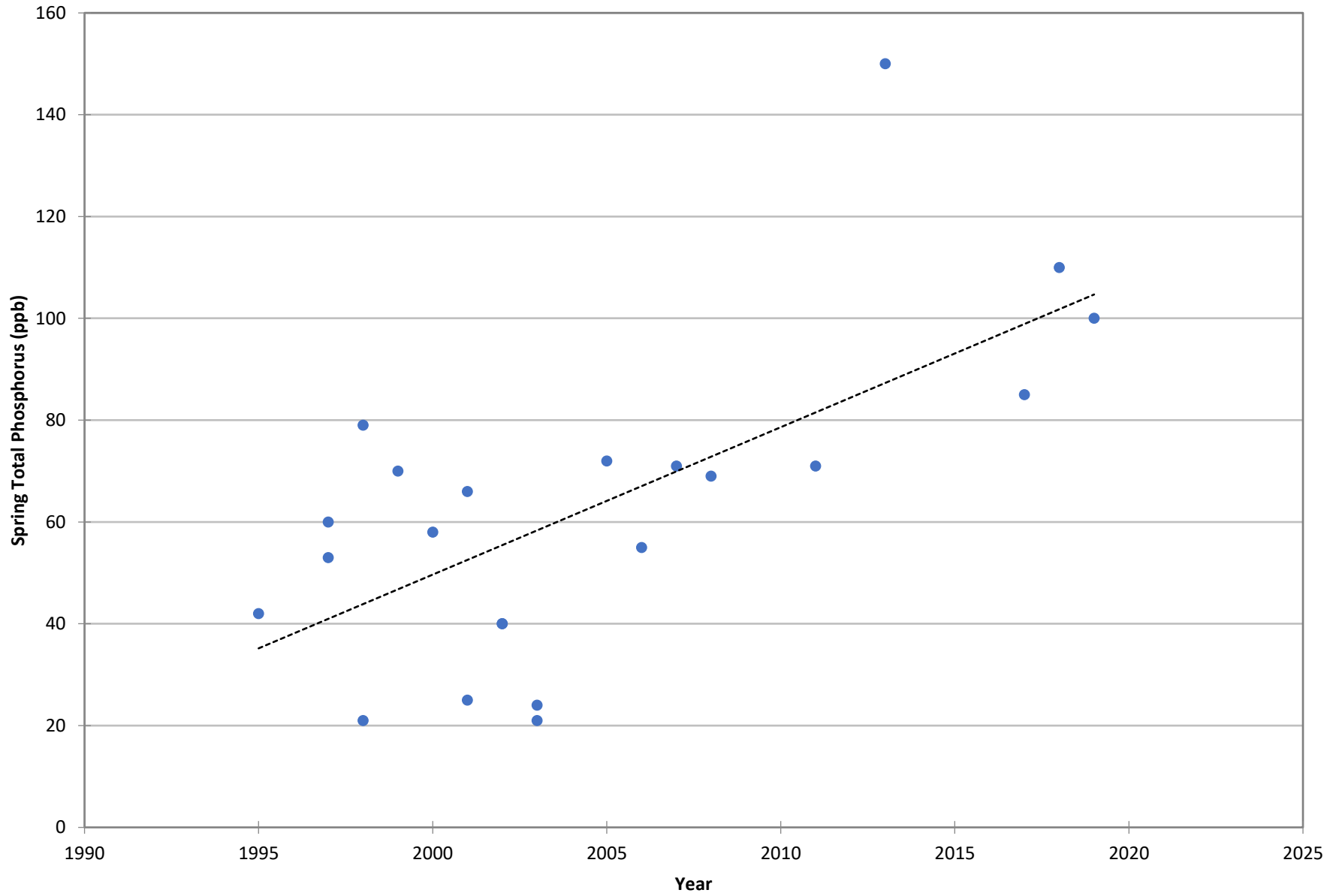
Crockery Lake (Ottawa Co.), 700422



Vertical bars indicate standard deviation

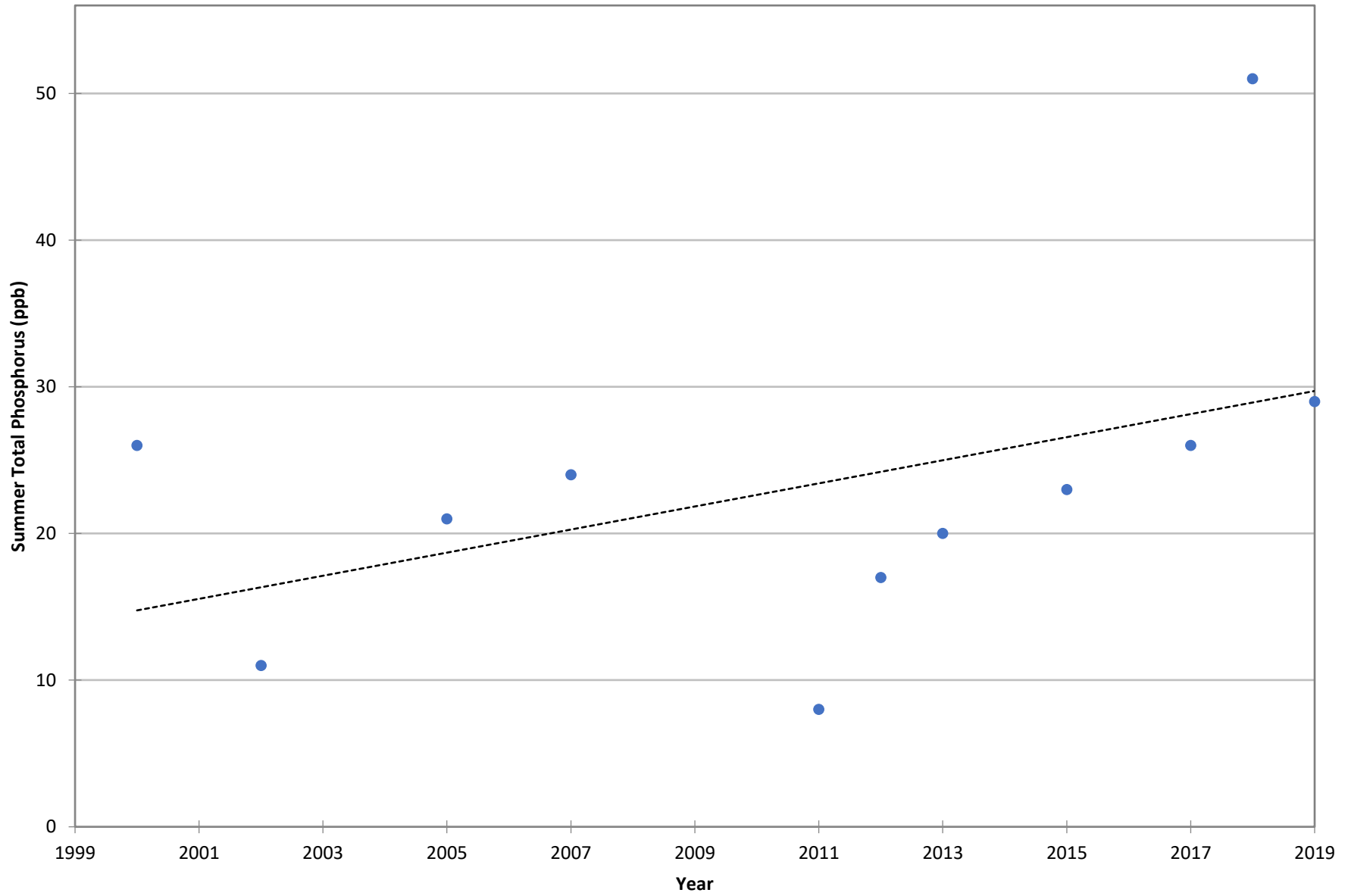
COOPERATIVE LAKES MONITORING PROGRAM
SPRING TOTAL PHOSPHORUS

Crockery Lake (Ottawa Co.), 700422



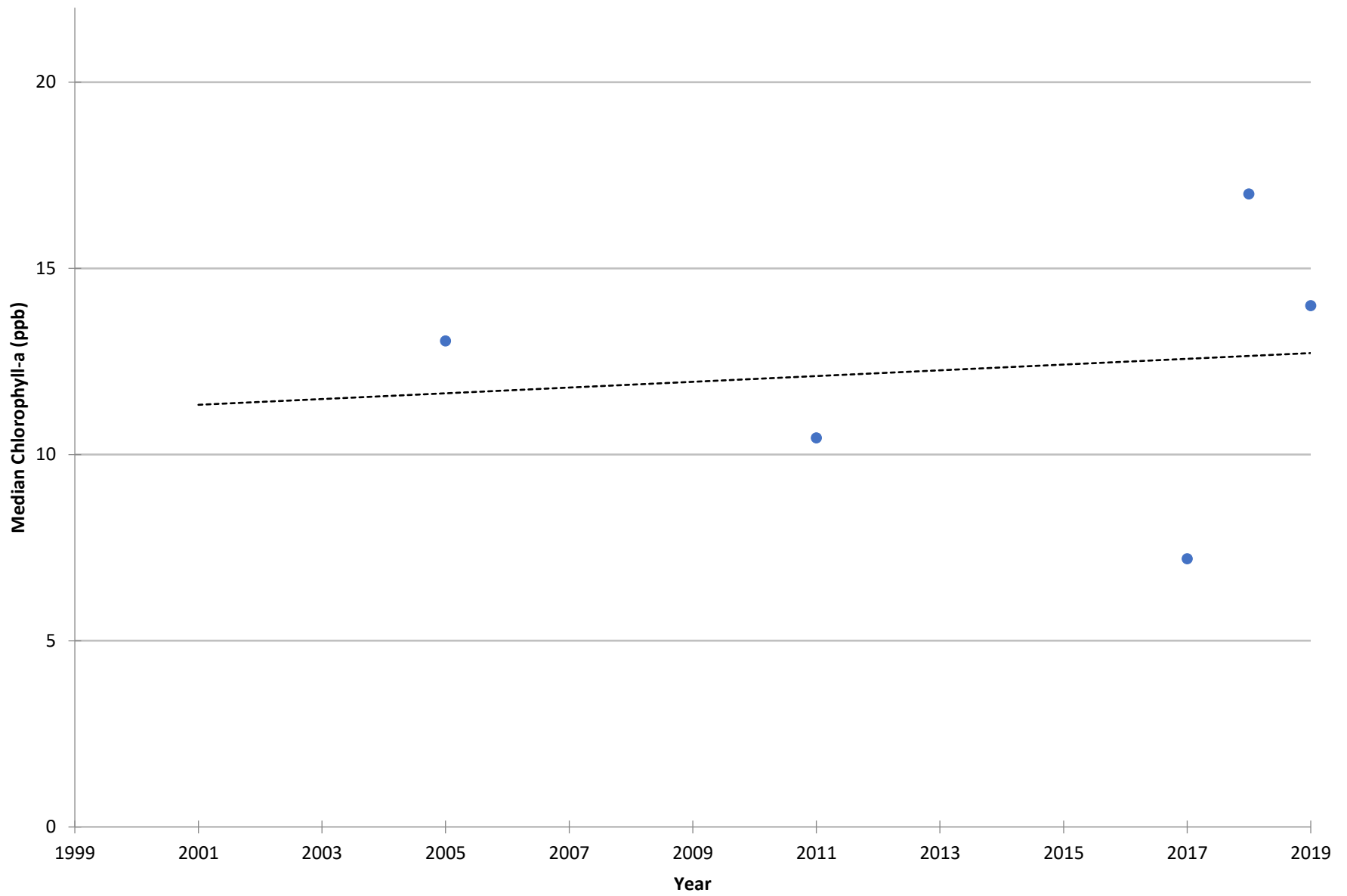
COOPERATIVE LAKES MONITORING PROGRAM
SUMMER TOTAL PHOSPHORUS

Crockery Lake (Ottawa Co.), 700422



COOPERATIVE LAKES MONITORING PROGRAM
SUMMER MEDIAN CHLOROPHYLL-A

Crockery Lake (Ottawa Co.), 700422



Vertical bars indicate standard deviation

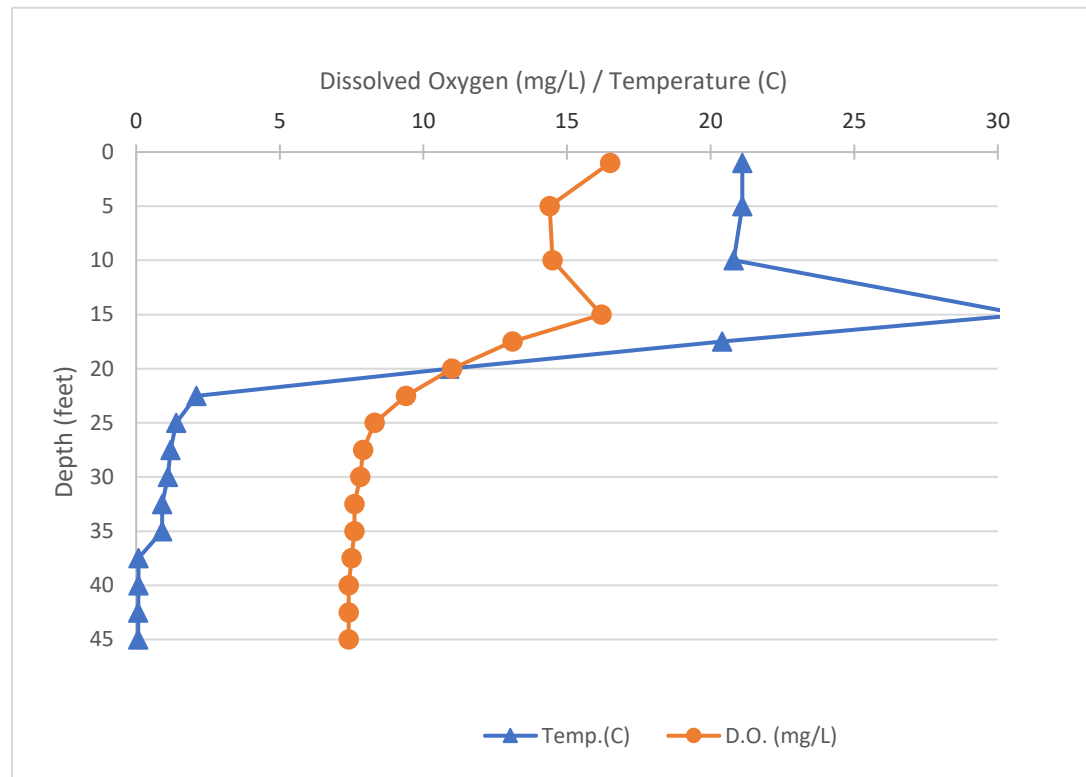
Name: Crockery Lake
 County: Ottawa
 Site ID: 700422
 Date: 6/10/2019

Dissolved Oxygen and Temperature Profile

Depth (ft)	Temp.(C)	D.O. (mg/L)
1	21.1	16.5
5	21.1	14.4
10	20.8	14.5
15	30.9	16.2
17.5	20.4	13.1
20	10.9	11
22.5	2.1	9.4
25	1.4	8.3
27.5	1.2	7.9
30	1.1	7.8
32.5	0.9	7.6
35	0.9	7.6
37.5	0.08	7.5
40	0.08	7.4
42.5	0.07	7.4
45	0.07	7.4

Lake: Crockery Lake (Ottawa Co.)

6/10/2019



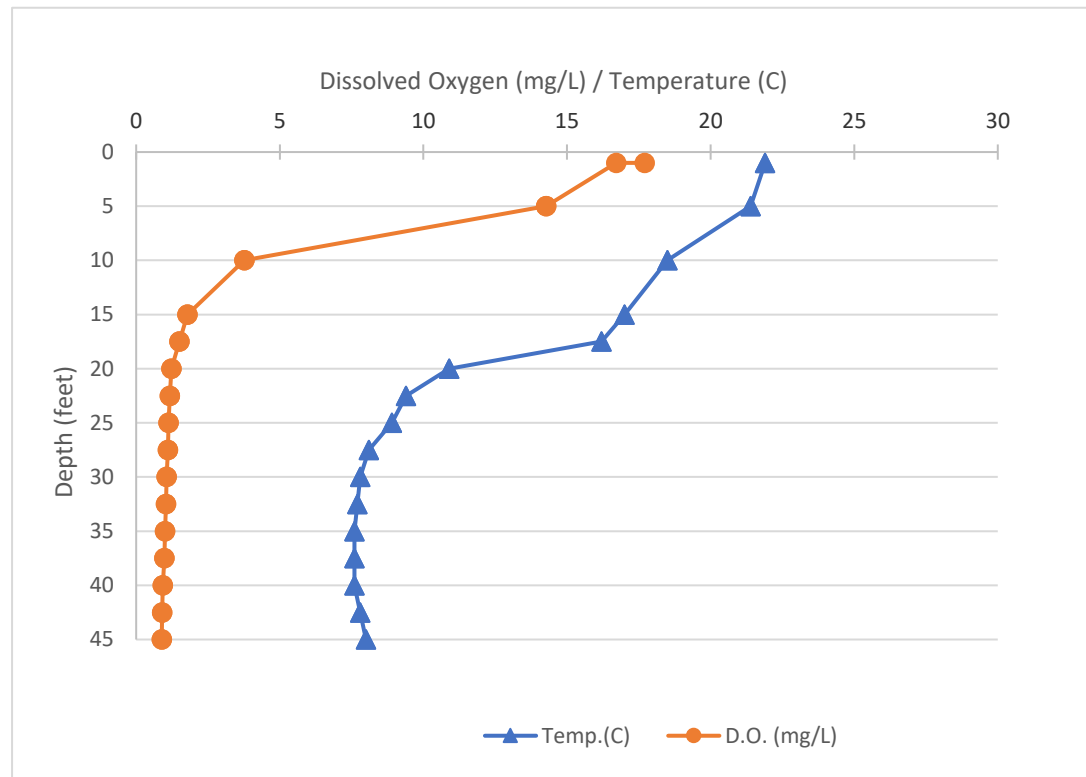
Name: Crockery Lake
 County: Ottawa
 Site ID: 700422
 Date: 6/24/2019

Dissolved Oxygen and Temperature Profile

Depth (ft)	Temp.(C)	D.O. (mg/L)
1	21.9	17.71
1	21.9	16.71
5	21.4	14.28
5	21.4	14.28
10	18.5	3.77
10	18.5	3.77
15	17	1.79
15	17	1.79
17.5	16.2	1.51
17.5	16.2	1.51
20	10.9	1.23
20	10.9	1.23
22.5	9.4	1.17
22.5	9.4	1.17
25	8.9	1.13
25	8.9	1.13
27.5	8.1	1.1
27.5	8.1	1.1
30	7.8	1.06
30	7.8	1.06
32.5	7.7	1.04
32.5	7.7	1.04
35	7.6	1.01
35	7.6	1.01
37.5	7.6	0.98
37.5	7.6	0.98
40	7.6	0.93
40	7.6	0.93
42.5	7.8	0.91
42.5	7.8	0.91
45	8	0.89
45	8	0.89

Lake: Crockery Lake (Ottawa Co.)

6/24/2019



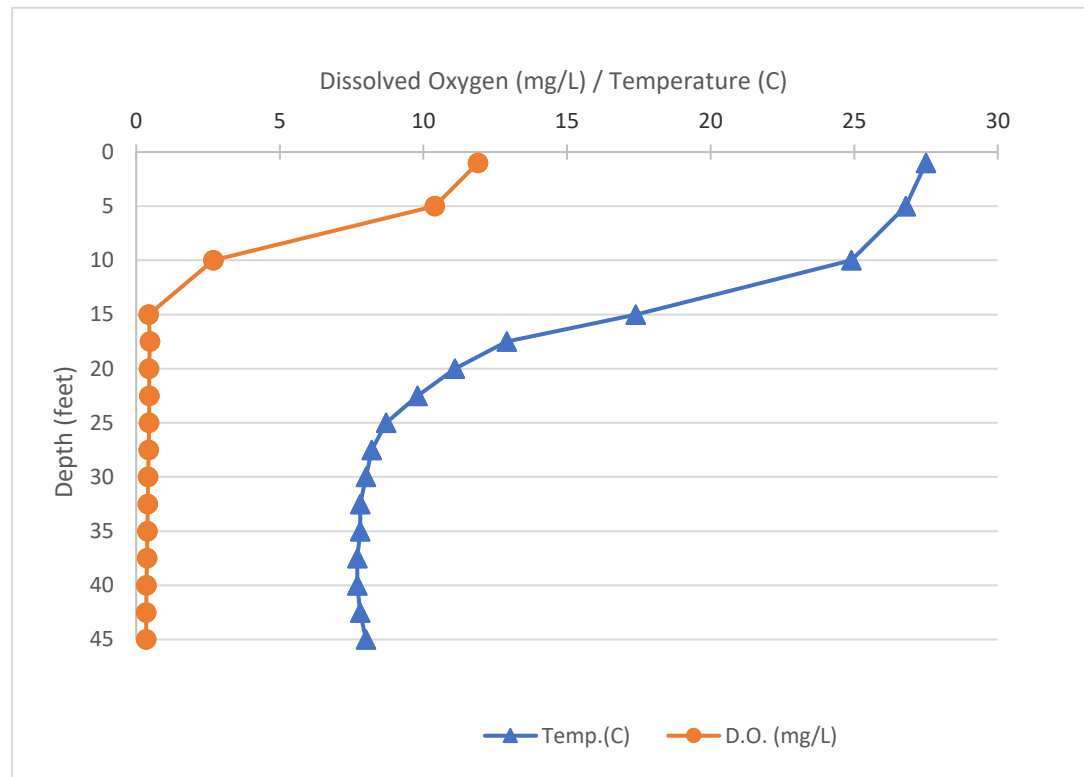
Name: Crockery Lake
 County: Ottawa
 Site ID: 700422
 Date: 7/9/2019

Dissolved Oxygen and Temperature Profile

Depth (ft)	Temp.(C)	D.O. (mg/L)
1	27.5	11.9
1	27.5	11.9
5	26.8	10.4
5	26.8	10.4
10	24.9	2.69
10	24.9	2.69
15	17.4	0.44
15	17.4	0.44
17.5	12.9	0.48
17.5	12.9	0.48
20	11.1	0.45
20	11.1	0.45
22.5	9.8	0.46
22.5	9.8	0.46
25	8.7	0.45
25	8.7	0.45
27.5	8.2	0.44
27.5	8.2	0.44
30	8	0.42
30	8	0.42
32.5	7.8	0.4
32.5	7.8	0.4
35	7.8	0.39
35	7.8	0.39
37.5	7.7	0.38
37.5	7.7	0.38
40	7.7	0.36
40	7.7	0.36
42.5	7.8	0.35
42.5	7.8	0.35
45	8	0.35
45	8	0.35

Lake: Crockery Lake (Ottawa Co.)

7/9/2019



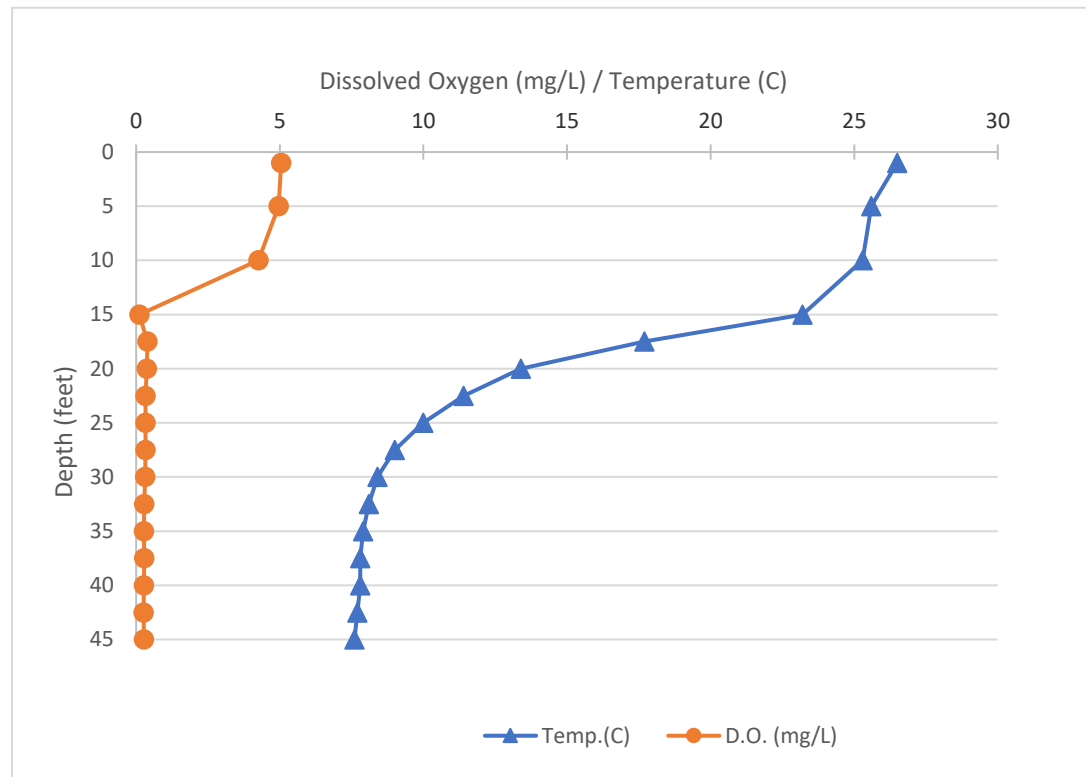
Name: Crockery Lake
 County: Ottawa
 Site ID: 700422
 Date: 7/30/2019

Dissolved Oxygen and Temperature Profile

Depth (ft)	Temp.(C)	D.O. (mg/L)
1	26.5	5.05
5	25.6	4.96
10	25.3	4.26
15	23.2	0.11
17.5	17.7	0.39
20	13.4	0.37
22.5	11.4	0.32
25	10	0.33
27.5	9	0.33
30	8.4	0.31
32.5	8.1	0.28
35	7.9	0.27
37.5	7.8	0.28
40	7.8	0.27
42.5	7.7	0.26
45	7.6	0.27

Lake: Crockery Lake (Ottawa Co.)

7/30/2019



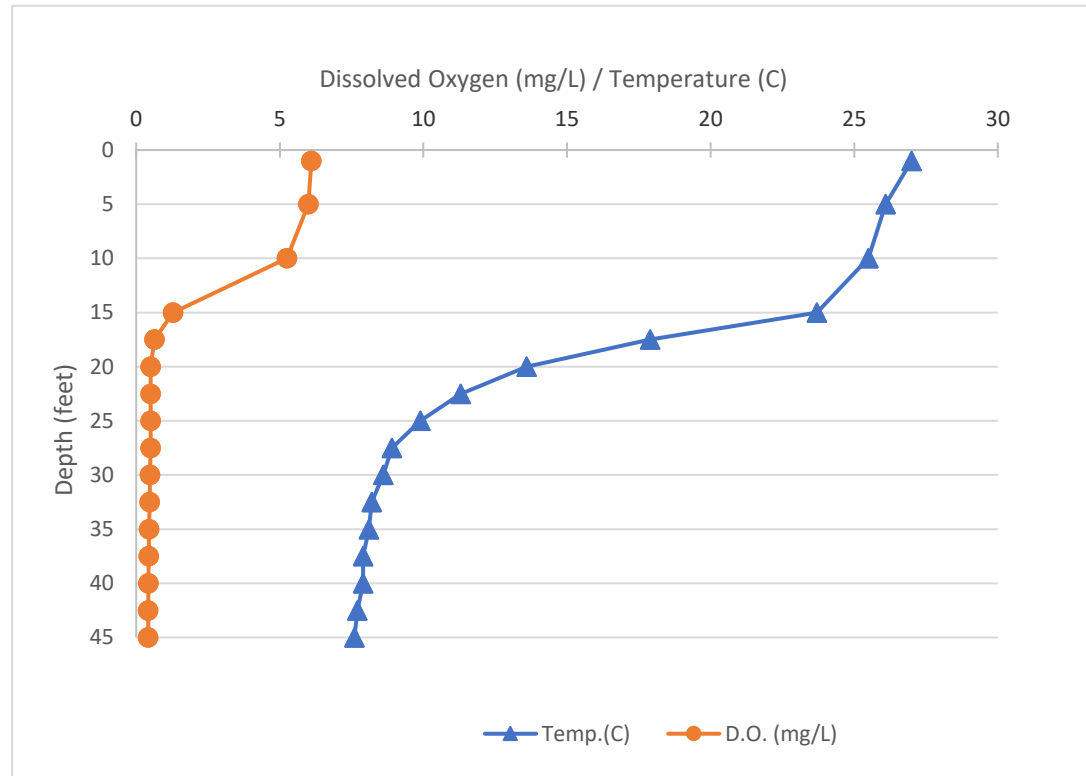
Name: Crockery Lake
 County: Ottawa
 Site ID: 700422
 Date: 8/12/2019

Dissolved Oxygen and Temperature Profile

Depth (ft)	Temp.(C)	D.O. (mg/L)
1	27	6.1
1	27	6.1
5	26.1	6
5	26.1	6
10	25.5	5.25
10	25.5	5.25
15	23.7	1.28
15	23.7	1.28
17.5	17.9	0.64
17.5	17.9	0.64
20	13.6	0.5
20	13.6	0.5
22.5	11.3	0.5
22.5	11.3	0.5
25	9.9	0.5
25	9.9	0.5
27.5	8.9	0.5
27.5	8.9	0.5
30	8.6	0.48
30	8.6	0.48
32.5	8.2	0.47
32.5	8.2	0.47
35	8.1	0.45
35	8.1	0.45
37.5	7.9	0.44
37.5	7.9	0.44
40	7.9	0.43
40	7.9	0.43
42.5	7.7	0.42
42.5	7.7	0.42
45	7.6	0.42
45	7.6	0.42

Lake: Crockery Lake (Ottawa Co.)

8/12/2019



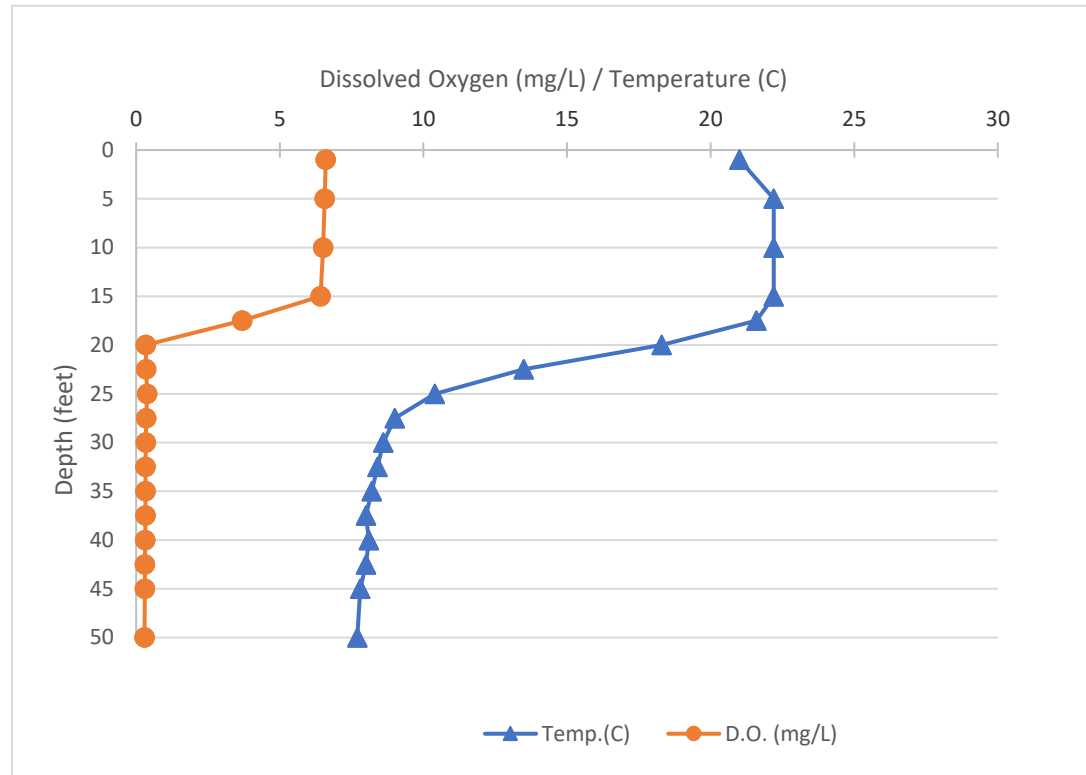
Name: Crockery Lake
 County: Ottawa
 Site ID: 700422
 Date: 8/30/2019

Dissolved Oxygen and Temperature Profile

Depth (ft)	Temp.(C)	D.O. (mg/L)
1	21	6.6
1	21	6.6
5	22.2	6.57
5	22.2	6.57
10	22.2	6.51
10	22.2	6.51
15	22.2	6.42
15	22.2	6.42
17.5	21.6	3.69
17.5	21.6	3.69
20	18.3	0.34
20	18.3	0.34
22.5	13.5	0.35
22.5	13.5	0.35
25	10.4	0.38
25	10.4	0.38
27.5	9	0.35
27.5	9	0.35
30	8.6	0.34
30	8.6	0.34
32.5	8.4	0.33
32.5	8.4	0.33
35	8.2	0.32
35	8.2	0.32
37.5	8	0.32
37.5	8	0.32
40	8.1	0.31
40	8.1	0.31
42.5	8	0.3
42.5	8	0.3
45	7.8	0.3
45	7.8	0.3
50	7.7	0.29
50	7.7	0.29

Lake: Crockery Lake (Ottawa Co.)

8/30/2019



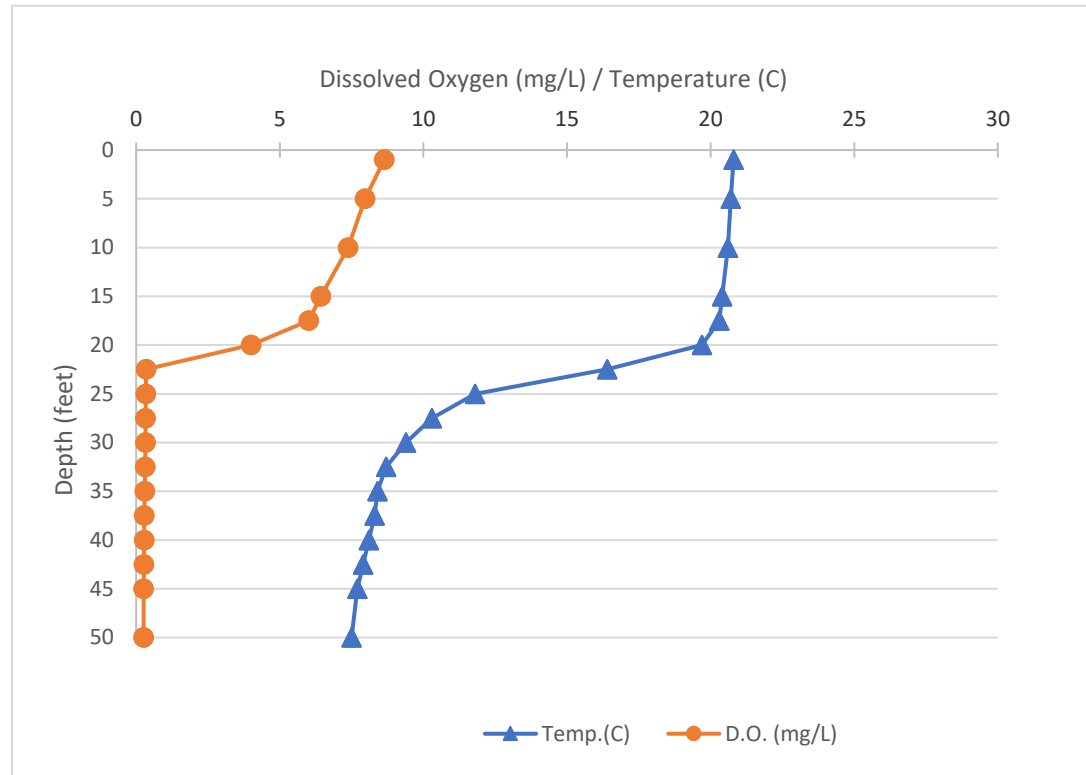
Name: Crockery Lake
 County: Ottawa
 Site ID: 700422
 Date: 9/15/2019

Dissolved Oxygen and Temperature Profile

Depth (ft)	Temp.(C)	D.O. (mg/L)
1	20.8	8.64
1	20.8	8.64
5	20.7	7.97
5	20.7	7.97
10	20.6	7.38
10	20.6	7.38
15	20.4	6.43
15	20.4	6.43
17.5	20.3	6.01
17.5	20.3	6.01
20	19.7	4
20	19.7	4
22.5	16.4	0.35
22.5	16.4	0.35
25	11.8	0.34
25	11.8	0.34
27.5	10.3	0.33
27.5	10.3	0.33
30	9.4	0.33
30	9.4	0.33
32.5	8.7	0.31
32.5	8.7	0.31
35	8.4	0.3
35	8.4	0.3
37.5	8.3	0.28
37.5	8.3	0.28
40	8.1	0.28
40	8.1	0.28
42.5	7.9	0.27
42.5	7.9	0.27
45	7.7	0.26
45	7.7	0.26
50	7.5	0.26
50	7.5	0.26

Lake: Crockery Lake (Ottawa Co.)

9/15/2019



Name: Crockery Lake
 County: Ottawa
 Site ID: 700422
 Date: 10/1/2019

Dissolved Oxygen and Temperature Profile

Depth (ft)	Temp.(C)	D.O. (mg/L)
1	19.9	8.1
1	19.9	8.1
5	19.5	7.67
5	19.5	7.67
10	19.2	7.31
10	19.2	7.31
15	18.9	6.76
15	18.9	6.76
17.5	18.8	6.54
17.5	18.8	6.54
20	18.4	4.47
20	18.4	4.47
22.5	17.5	2.11
22.5	17.5	2.11
25	15.2	0.82
25	15.2	0.82
27.5	10.7	0.44
27.5	10.7	0.44
30	9.7	0.43
30	9.7	0.43
32.5	9	0.43
32.5	9	0.43
35	8.7	0.4
35	8.7	0.4
37.5	8.6	0.4
37.5	8.6	0.4
40	8.4	0.37
40	8.4	0.37
42.5	8.2	0.37
42.5	8.2	0.37
45	7.9	0.36
45	7.9	0.36
50	7.6	0.33
50	7.6	0.33

Lake: Crockery Lake (Ottawa Co.)

10/1/2019

