



2021 Data Report for

Indian Lake, Kalamazoo County

Site ID: 390305

42.14985°N, 85.49112°W

The CLMP is brought to you by:



Michigan Clean
Water Corps

EGL

MICHIGAN DEPARTMENT OF
ENVIRONMENT, GREAT LAKES, AND ENERGY

MICHIGAN STATE
UNIVERSITY



Huron
River
Watershed
Council

About this report:

This report is a summary of the data that have been collected through the Cooperative Lakes Monitoring Program. The contents have been customized for your lake. The first page is a summary of the Trophic Status Indicators of your lake (Secchi Disk Transparency, Chlorophyll-a, Spring Total Phosphorus, and Summer Total Phosphorus). Where data are available, they have been summarized for the most recent field season, five years prior to the most recent field season, and since the first year your lake has been enrolled in the program.

If you did not take 8 or more Secchi disk measurements or 4 or more chlorophyll measurements, there will not be summary data calculated for these parameters. These numbers of measurements are required to ensure that the results are indicative of overall summer conditions.

If you enrolled in Dissolved Oxygen/Temperature, the summary page will have a graph of one of the profiles taken during the late summer (typically August or September). If your lake stratifies, we will use a graph showing the earliest time of stratification, because identifying the timing of this condition and the depth at which it occurs is typically the most important use of dissolved oxygen measurements.

The back of the summary page will be an explanation of the Trophic Status Index and where your lake fits on that scale.

The rest of the report will be aquatic plant summaries, Score the Shore results, and larger graphs, including all Dissolved Oxygen/Temperature Profiles that you recorded. For Secchi Disk, Chlorophyll, and Phosphorus parameters, you need to have two years of data for a graph to make logical sense. Therefore if this is the first year you have enrolled in the CLMP, you will not receive a graph for these parameters.

Remember that some lakes see a lot of fluctuation in these parameters from year to year. Until you have eight years worth of data, consider all trends to be preliminary.

To learn more about the CLMP monitoring parameters or get definitions to unknown terms, check out the CLMP Manual, found at: https://micorps.net/wp-content/uploads/2021/03/CLMP-Manual-2019update2_2021.pdf

Thank you!

The CLMP leadership team would like to thank you for all of your efforts over the past year. The CLMP would not exist without dedicated and hardworking volunteers!

The CLMP Leadership Team is made of: Jo Latimore, Erick Elgin, Jean Roth, Tamara Lipsey, Mike Gallagher, Melissa DeSimone, and Paul Steen

Questions?

If you have questions on this report or believe that the tabulated data for your lake in this report are in error please contact:

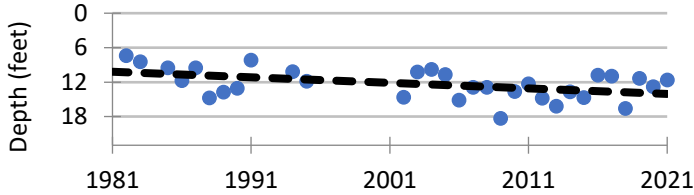
Paul Steen (psteen@hrwc.org), CLMP Data Analyst

Indian Lake, Kalamazoo County 2021 CLMP Results



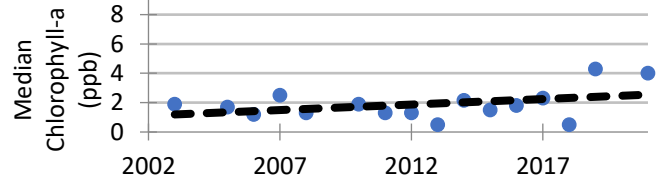
Secchi Disk Transparency (feet)

Year	# Readings	Min	Max	Avg	Std. Dev	Carlson TSI
2021	14	8.0	20.0	11.6	3.3	42
2016-2020	71	5.5	33.0	11.6	5.1	41
1981-2015	389	4.0	30.0	12.3	4.8	41
2021 All CLMP Lakes	2817	1.0	50.0	12.7	2.9	42



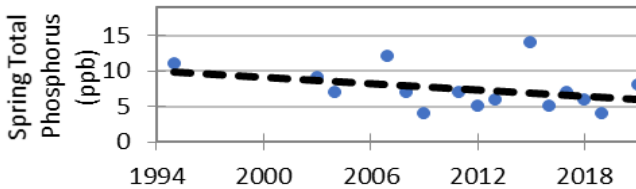
Chlorophyll-a (parts per billion)

Year	# Samples	Min	Max	Med	Std. Dev	Carlson TSI
2021	5	2.2	5.6	4.0	1.4	44
2016-2019	20	<1.0	8.1	2.1	1.6	38
2003-2015	54	<1.0	3.6	2.1	0.9	35
2021 All CLMP Lakes	635	< 1.0	42.0	2.2	3.4	39



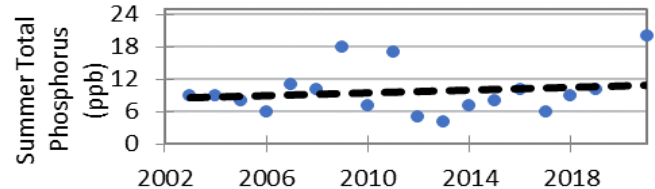
Spring Phosphorus (parts per billion)

Year	# Samples	Min	Max	Avg	Std. Dev
2021	1	8.0	8.0	8.0	NA
2016-2019	4	<5 T	7.0	5.5	1.3
1995-2015	10	<5 T	14.0	8.2	3.2
2021 All CLMP Lakes	220	<= 3	100.0	14.9	11.0



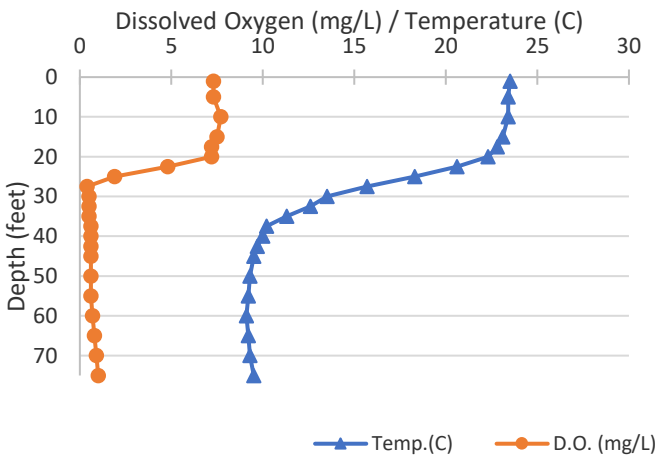
Summer Phosphorus (parts per billion)

Year	# Samples	Min	Max	Avg	Std. Dev	Carlson TSI
2021	1	20.0	20.0	20.0	NA	47
2016-2019	4	6.0	10.0	8.8	1.9	35
2003-2015	13	<5 T	18.0	9.2	4.2	35
2021 All CLMP Lakes	281	<= 3	65.0	12.8	9.3	38



Dissolved Oxygen and Temperature Profile

9/15/2021



Summary

Average TSI	2021	2016-2020	1981-2015
Indian Lake	44	38	37
All CLMP Lakes	42	40	42

With an average TSI score of 44 based on 2021 Secchi transparency, chlorophyll-a, and summer total phosphorus data, this lake is rated as a mesotrophic lake.

The lake keeps some dissolved oxygen in the bottom waters through mid-summer, but by late summer the lake has stratified and the bottom water is devoid of oxygen.

While the trends for individual parameters are mixed, the overall nutrient levels in the lake are largely unchanged since monitoring began.

* = No sample received W= Value is less than the detection limit (<3 ppb) T= Value reported is less than the reporting limit (5 ppb).
<1.0 = Chlorophyll-a: Sample value is less than limit of quantification (<1 ppb).

Trophic Status Index Explained

In 1977, limnologist Dr. Robert Carlson developed a numerical scale (0-100) where the numbers indicate the level of nutrient enrichment. Using the proper equations, we can convert results from Summer Total Phosphorus, Secchi Depth, and Chlorophyll-a to this Trophic Status Index (TSI). The TSI numbers are furthermore grouped into general categories (oligotrophic, mesotrophic, eutrophic, and hypereutrophic), to quickly give us a way to understand the general nutrient level of any lake.

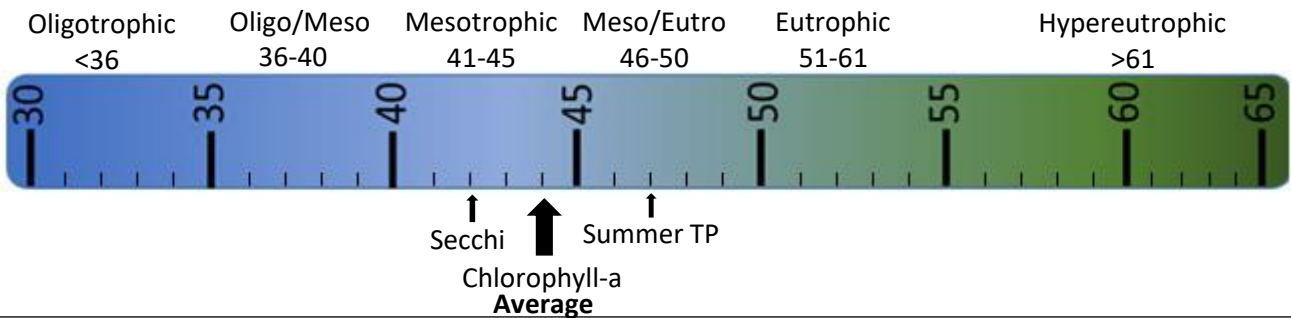
The tables below give the results-to-TSI conversions for the water quality data ranges normally seen in the CLMP. The formulas for this conversion can be found in the CLMP manual (link is on page 2 of this report).

Phosphorus (ppb)	TSI Value
<5	<27
6	30
8	34
10	37
12	40
15	43
18	46
21	48
24	50
32	54
36	56
42	58
48	60
>50	>61

Secchi Depth (ft)	TSI Value
>30	<28
25	31
20	34
15	38
12	42
10	44
7.5	48
6	52
4	57
<3	>61

Chlorophyll-a (ppb)	TSI Value
<1	<31
2	37
3	41
4	44
6	48
8	51
12	55
16	58
22	61
>22	>61

TSI for Indian Lake in 2021	
Average	44
Secchi Disk	42
Summer TP	47
Chlorophyll-a	44



Oligotrophic: Generally deep and clear lakes with little aquatic plant or algae growth. These lakes maintain sufficient dissolved oxygen in the cool, deep-bottom waters during late summer to support cold water fish, such as trout and whitefish.

Mesotrophic: Lakes that fall between oligotrophic and eutrophic. Mid-ranged amounts of nutrients.

Eutrophic: Highly productive eutrophic lakes are generally shallow, turbid, and support abundant aquatic plant growth. In deep eutrophic lakes, the cool bottom waters usually contain little or no dissolved oxygen. Therefore, these lakes can only support warm water fish, such as bass and pike.

Hypereutrophic: A specialized category of eutrophic lakes. These lakes exhibit extremely high productivity, such as nuisance algae and weed growth.

Indian Lake, Kalamazoo County 2021 CLMP Aquatic Plant Results



Indian Lake does not have aquatic plant data available for 2021. Consider enrolling in an aquatic plant parameter next year.

Why is monitoring aquatic plants important?

A major component of the plant community in lakes is the large, leafy, rooted plants. Compared to the microscopic algae the rooted plants are large. Sometimes they are collectively called the “macrophytes” (“macro” meaning large and “phyte” meaning plant). These macrophytes are the plants that people sometimes complain about and refer to as lake weeds.

Far from being weeds, macrophytes or rooted aquatic plants are a natural and essential part of the lake, just as grasses, shrubs and trees are a natural part of the land. Their roots are a fabric for holding sediments in place, reducing erosion and maintaining bottom stability. They provide habitat for fish, including structure for food organisms, nursery areas, foraging and predator avoidance. Waterfowl, shore birds and aquatic mammals use plants to forage on and within, and as nesting materials and cover.

Though plants are important to the lake, overabundant plants can negatively affect fish populations, fishing and other recreational activities. Rooted plant populations increase in abundance as nutrient concentrations increase in the lake. As lakes become more eutrophic rooted plant populations increase. They are rarely a problem in oligotrophic lakes, only occasionally a problem in mesotrophic lakes, sometimes a problem in eutrophic lakes, and often a problem in hypereutrophic lakes.

However, sometimes a lake is invaded by an aquatic plant species that is not native to Michigan. In these cases, even nutrient poor oligotrophic lakes can be threatened. Some of these exotic plants, like Curly-leaf Pondweed, Eurasian Milfoil, Starry Stonewort, and Hydrilla can be extremely disruptive to the lake’s ecosystem and recreational activities.

To avoid a takeover by exotic plants, it is necessary to use Integrated Pest Management (IPM) strategies: monitoring, early detection, rapid response, maintenance control, and preventive management. For more information on these strategies, check out Integrated Pest Management for Nuisance Exotics in Michigan Inland Lakes (MSU Extension Water Quality Publication WQ-56, available at <https://micorps.net/lake-monitoring/clmp-documents/>)

The CLMP offers two parameters on aquatic plants. In the Exotic Aquatic Plant Watch, volunteers concentrate on monitoring and early detection of exotic invasive plants only. In Aquatic Plant Identification and Mapping, volunteers identify all native and non-native plants. In both parameters, volunteers create lake maps or use digital tools to georeference where the plants are found.

Indian Lake, Kalamazoo County 2021 Score the Shore Results



Indian Lake does not have shoreline habitat assessment results for 2021. Consider enrolling in this parameter next year!

Why is the Score the Shore parameter important?

Healthy shorelines are an important and valuable component of the lake ecosystem. The shoreline area is a transition zone between water and land, and should be a very diverse environment that provides habitat for a great variety of fish, plants, birds, and other animals. A healthy shoreline area is also essential for maintaining water quality, slowing runoff, and limiting erosion.

However, Michigan's inland lake shorelines are threatened. Extensive development, often combined with poor shoreline management practices, can reduce or eliminate natural shoreline habitat and replace it with lawn and artificial erosion control such as sea walls and rock. As a result, shoreline vegetation is dramatically altered, habitat is lost, and water quality declines.

Therefore, in 2015 the MiCorps Cooperative Lakes Monitoring Program introduced a new monitoring program – Score the Shore – that enables volunteers to assess the quality of their lake's shoreline habitat.

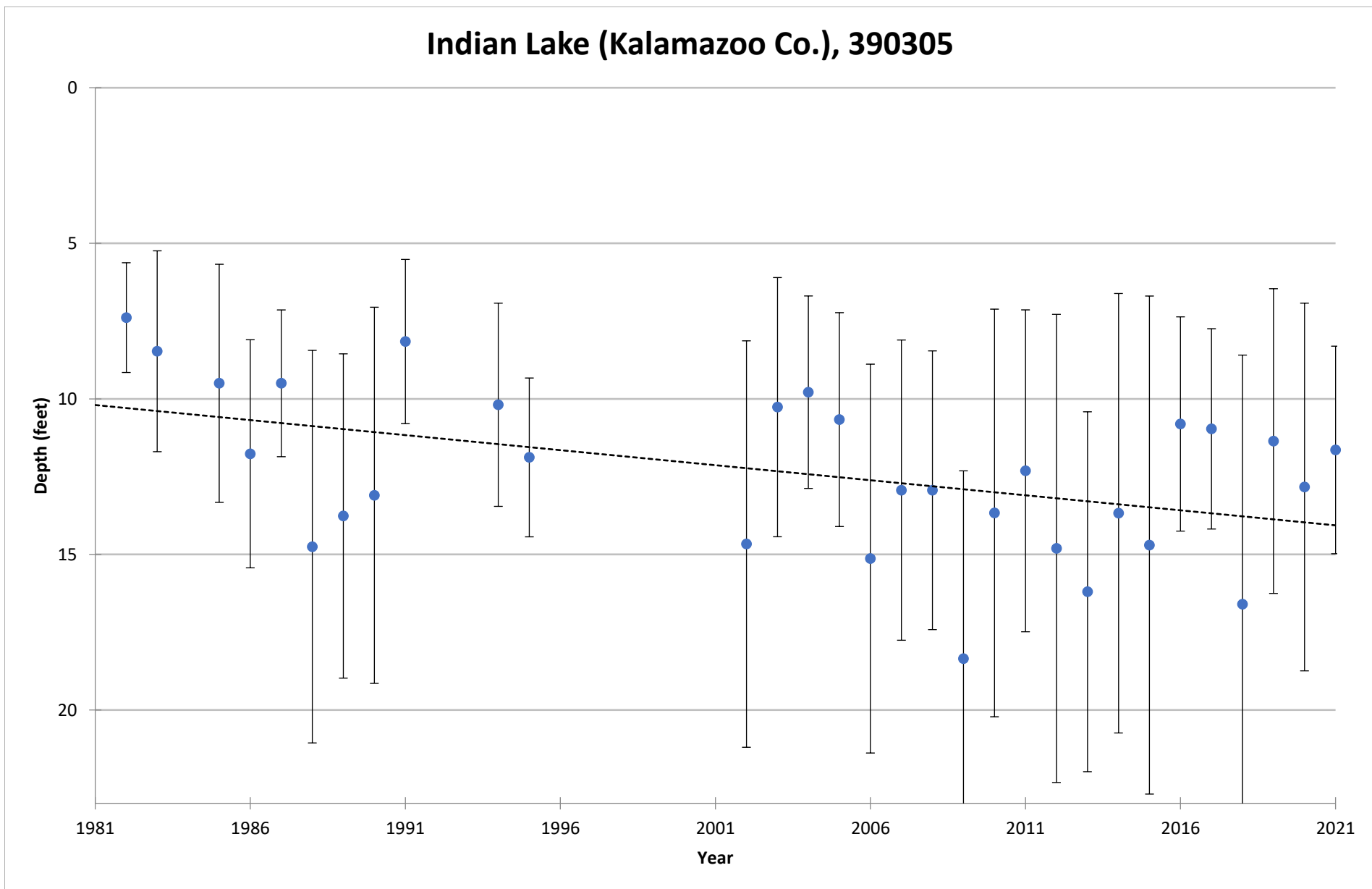
The information gathered during this assessment will allow lake communities to identify high-quality areas that can be protected, as well as opportunities for improvement. Score the Shore data, combined with educational resources describing the value of healthy shorelines and how to restore and maintain them, can be incorporated into lake management planning and used for educating lakefront property owners. The Michigan Natural Shoreline Partnership (MNSP) is a collaboration of agencies and professionals that promotes natural shoreline practices to protect Michigan's inland lakes. The MNSP website (www.mishorelinepartnership.org) includes materials and information that can be used in educational efforts. MNSP also offers training for professional educators and landscape contractors, and maintains a list of trained educators who may be available to speak to your community about natural shorelines.

Score the Shore data, just like all CLMP data, will also be available to any interested parties through the MiCorps Data Exchange (<https://micorps.net>). State agency staff and researchers regularly access CLMP data to better understand and manage Michigan's inland lakes.

Score the Shore is a descriptive process for assessing shoreline quality on Michigan's inland lakes. It is also a valuable educational tool. Score the Shore is not a regulatory program, nor is it intended to tell people what they can and cannot do on their property. The Michigan Department of Environmental Quality's Inland Lakes and Streams Program has responsibility for shoreline protection on public lakes. To learn about their shoreline protection program, including construction permitting and recommendations for shoreline management, visit www.mi.gov/deqinlandlakes.

COOPERATIVE LAKES MONITORING PROGRAM
SUMMER MEAN TRANSPARENCY

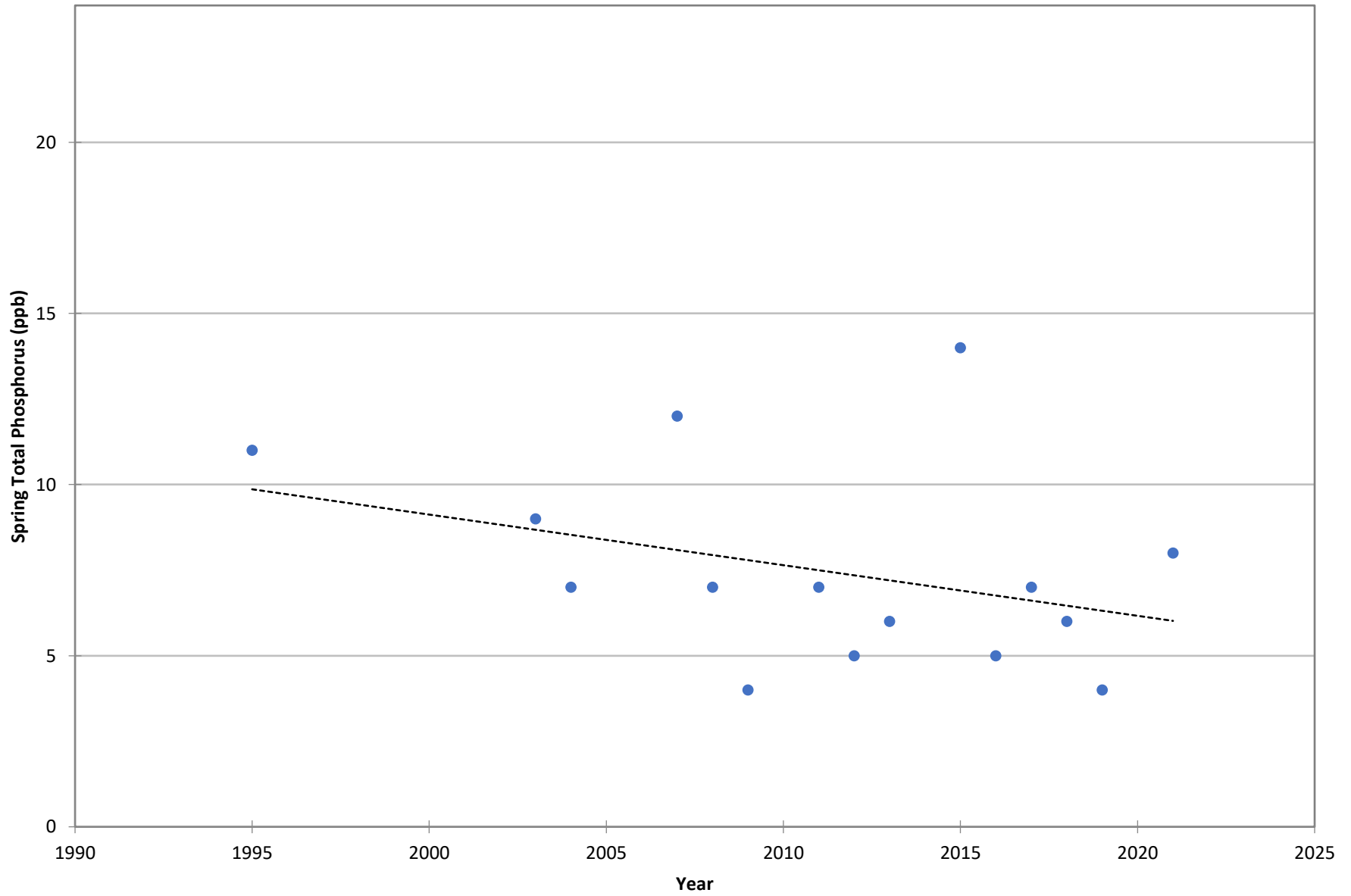
Indian Lake (Kalamazoo Co.), 390305



Vertical bars indicate standard deviation

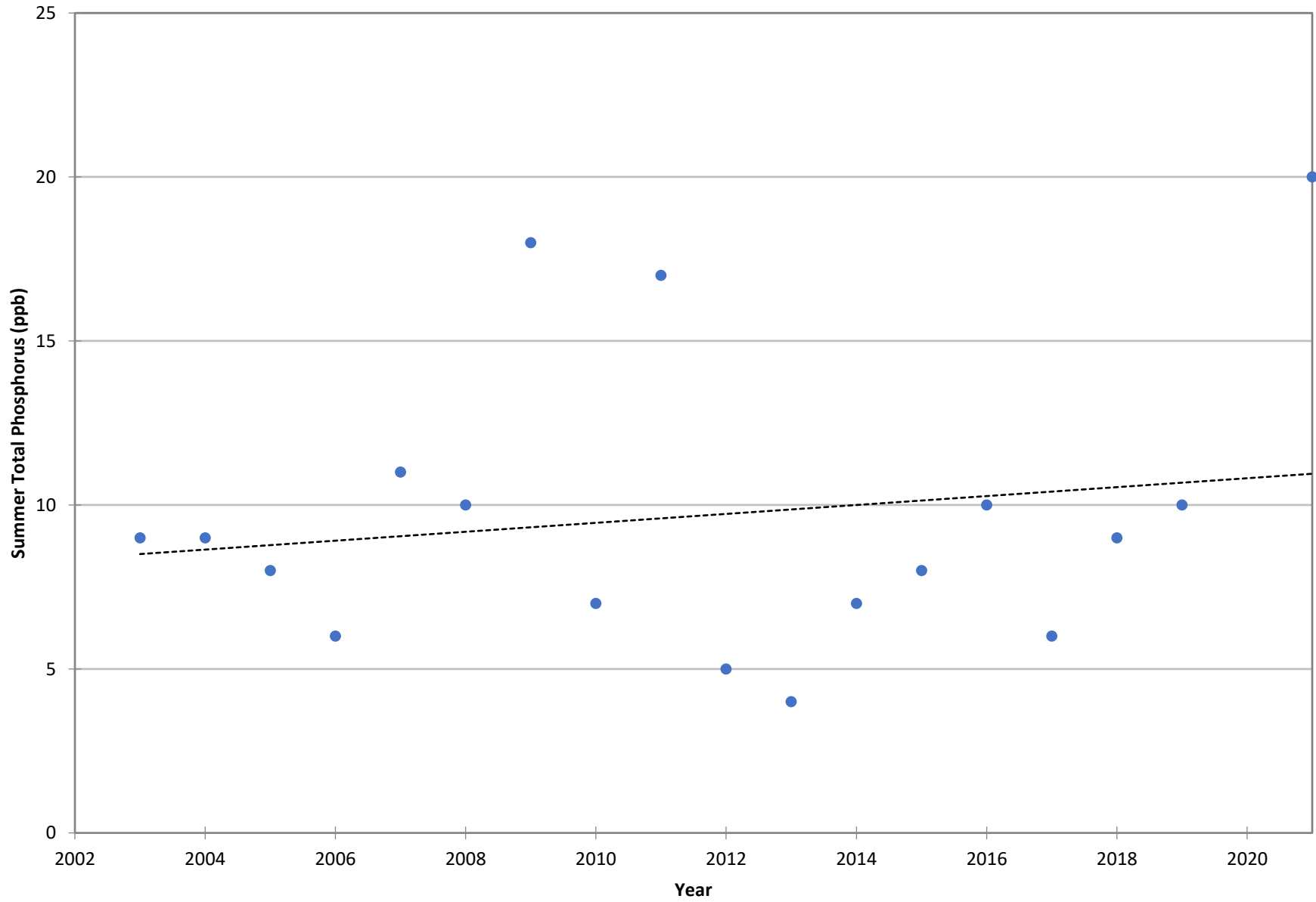
COOPERATIVE LAKES MONITORING PROGRAM
SPRING TOTAL PHOSPHORUS

Indian Lake (Kalamazoo Co.), 390305



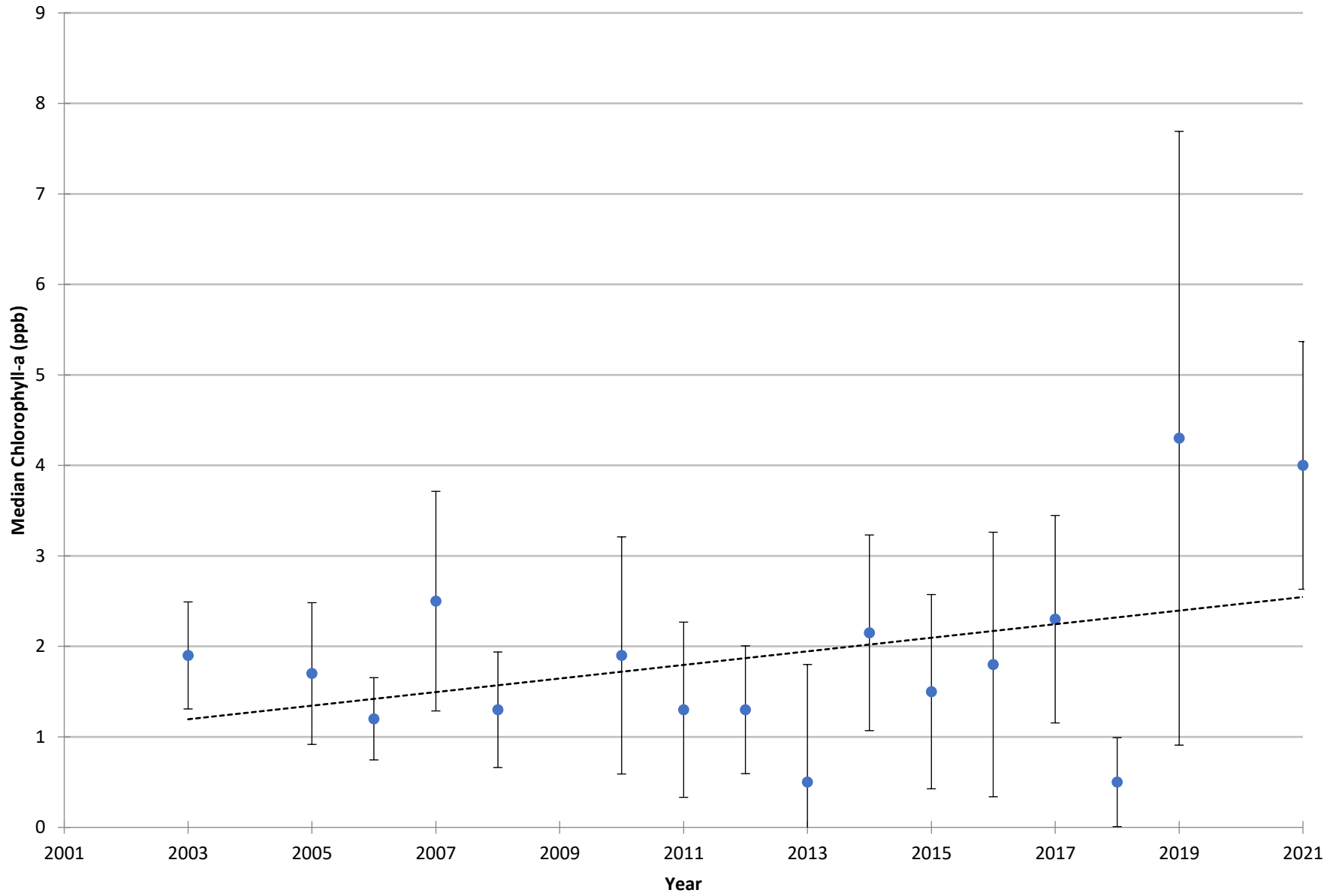
COOPERATIVE LAKES MONITORING PROGRAM
SUMMER TOTAL PHOSPHORUS

Indian Lake (Kalamazoo Co.), 390305



COOPERATIVE LAKES MONITORING PROGRAM
SUMMER MEDIAN CHLOROPHYLL-A

Indian Lake (Kalamazoo Co.), 390305



Vertical bars indicate standard deviation

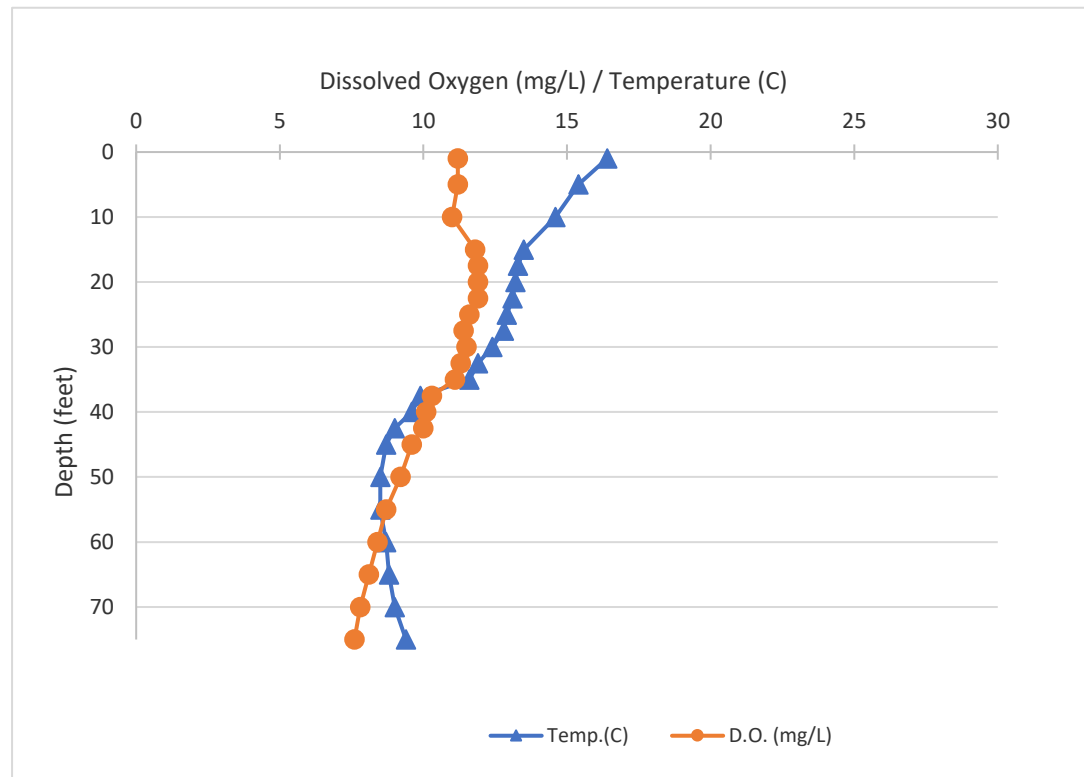
Name: Indian Lake
County: Kalamazoo
Site ID: 390305
Date: 5/15/2021

Dissolved Oxygen and Temperature Profile

Depth (ft)	Temp.(C)	D.O. (mg/L)
1	16.4	11.2
5	15.4	11.2
10	14.6	11
15	13.5	11.8
17.5	13.3	11.9
20	13.2	11.9
22.5	13.1	11.9
25	12.9	11.6
27.5	12.8	11.4
30	12.4	11.5
32.5	11.9	11.3
35	11.6	11.1
37.5	9.9	10.3
40	9.6	10.1
42.5	9	10
45	8.7	9.6
50	8.5	9.2
55	8.5	8.7
60	8.7	8.4
65	8.8	8.1
70	9	7.8
75	9.4	7.6

Lake: Indian Lake (Kalamazoo Co.)

5/15/2021



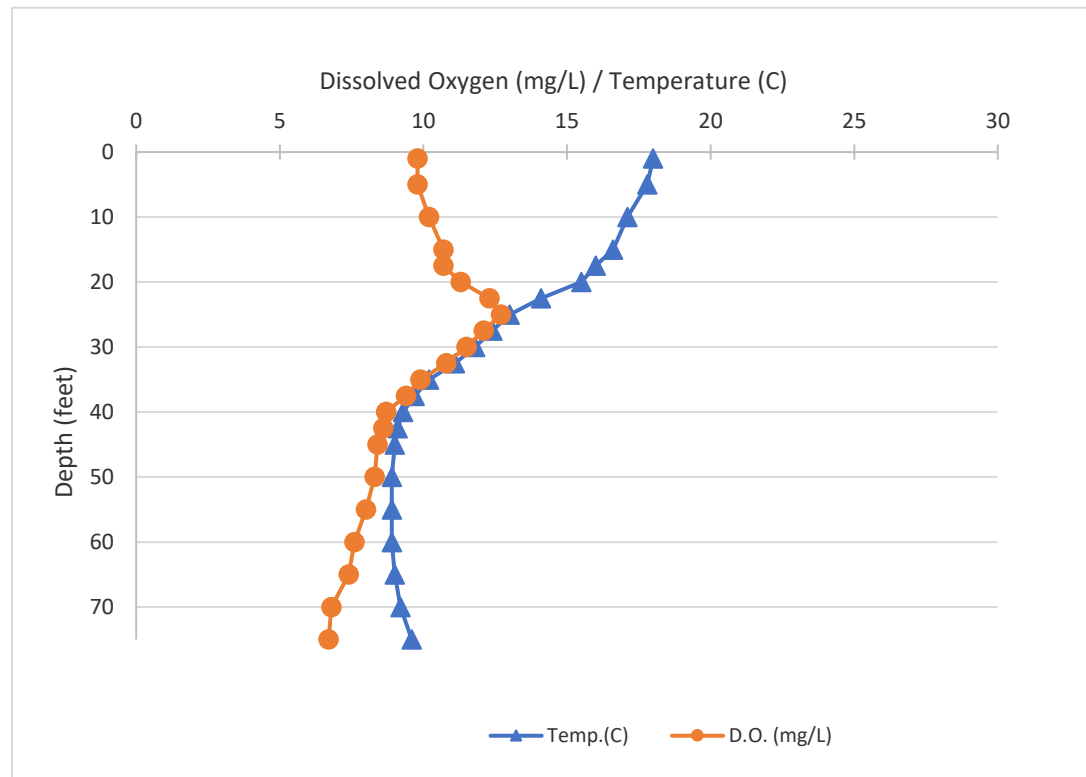
Name: Indian Lake
 County: Kalamazoo
 Site ID: 390305
 Date: 5/30/2021

Dissolved Oxygen and Temperature Profile

Depth (ft)	Temp.(C)	D.O. (mg/L)
1	18	9.8
5	17.8	9.8
10	17.1	10.2
15	16.6	10.7
17.5	16	10.7
20	15.5	11.3
22.5	14.1	12.3
25	13	12.7
27.5	12.4	12.1
30	11.8	11.5
32.5	11.1	10.8
35	10.2	9.9
37.5	9.7	9.4
40	9.3	8.7
42.5	9.1	8.6
45	9	8.4
50	8.9	8.3
55	8.9	8
60	8.9	7.6
65	9	7.4
70	9.2	6.8
75	9.6	6.7

Lake: Indian Lake (Kalamazoo Co.)

5/30/2021



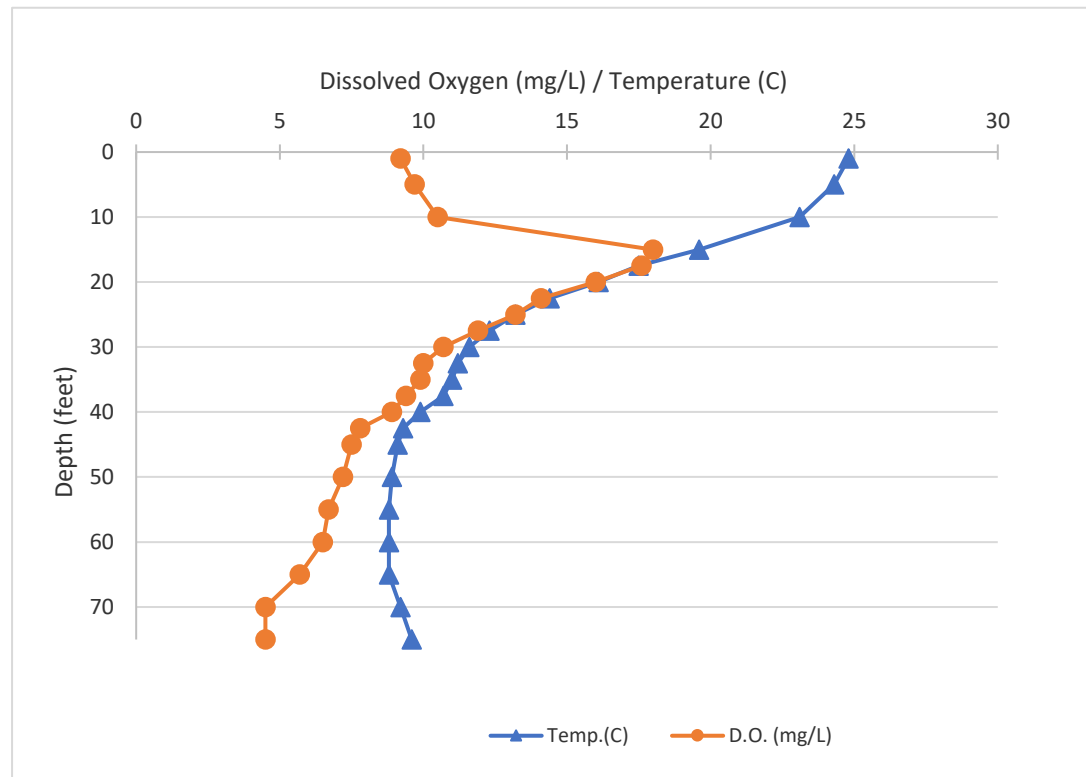
Name: Indian Lake
 County: Kalamazoo
 Site ID: 390305
 Date: 6/15/2021

Dissolved Oxygen and Temperature Profile

Depth (ft)	Temp.(C)	D.O. (mg/L)
1	24.8	9.2
5	24.3	9.7
10	23.1	10.5
15	19.6	18
17.5	17.5	17.6
20	16.1	16
22.5	14.4	14.1
25	13.2	13.2
27.5	12.3	11.9
30	11.6	10.7
32.5	11.2	10
35	11	9.9
37.5	10.7	9.4
40	9.9	8.9
42.5	9.3	7.8
45	9.1	7.5
50	8.9	7.2
55	8.8	6.7
60	8.8	6.5
65	8.8	5.7
70	9.2	4.5
75	9.6	4.5

Lake: Indian Lake (Kalamazoo Co.)

6/15/2021



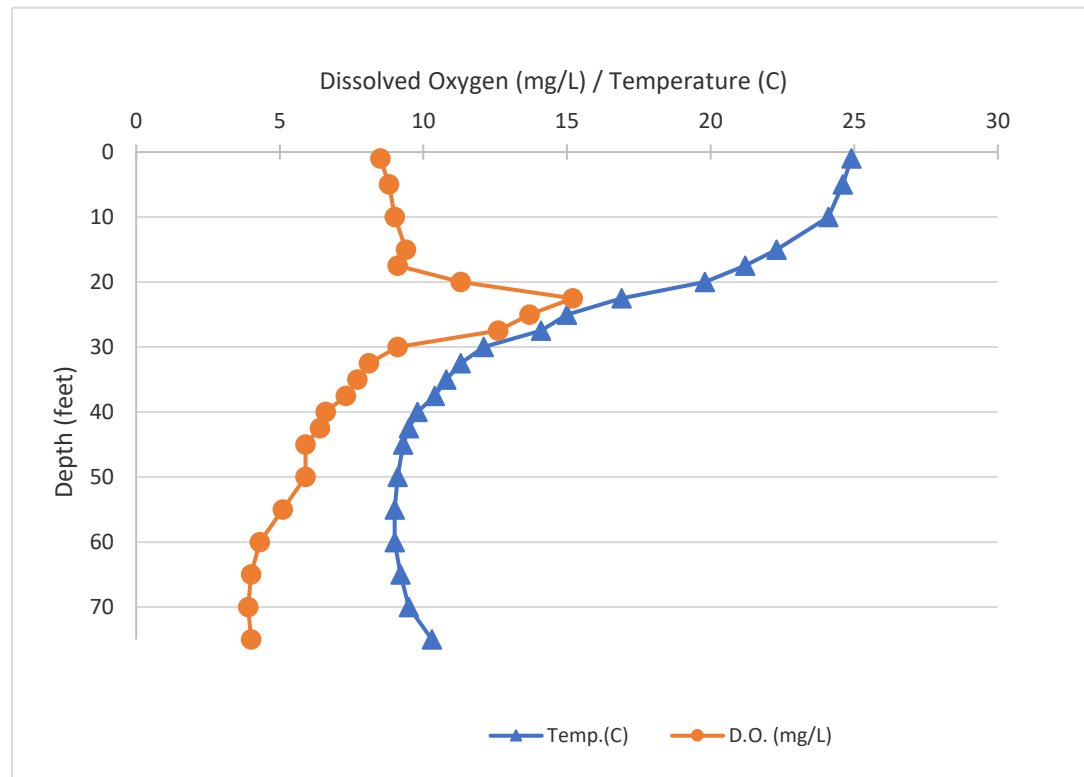
Name: Indian Lake
 County: Kalamazoo
 Site ID: 390305
 Date: 7/1/2021

Dissolved Oxygen and Temperature Profile

Depth (ft)	Temp.(C)	D.O. (mg/L)
1	24.9	8.5
5	24.6	8.8
10	24.1	9
15	22.3	9.4
17.5	21.2	9.1
20	19.8	11.3
22.5	16.9	15.2
25	15	13.7
27.5	14.1	12.6
30	12.1	9.1
32.5	11.3	8.1
35	10.8	7.7
37.5	10.4	7.3
40	9.8	6.6
42.5	9.5	6.4
45	9.3	5.9
50	9.1	5.9
55	9	5.1
60	9	4.3
65	9.2	4
70	9.5	3.9
75	10.3	4

Lake: Indian Lake (Kalamazoo Co.)

7/1/2021



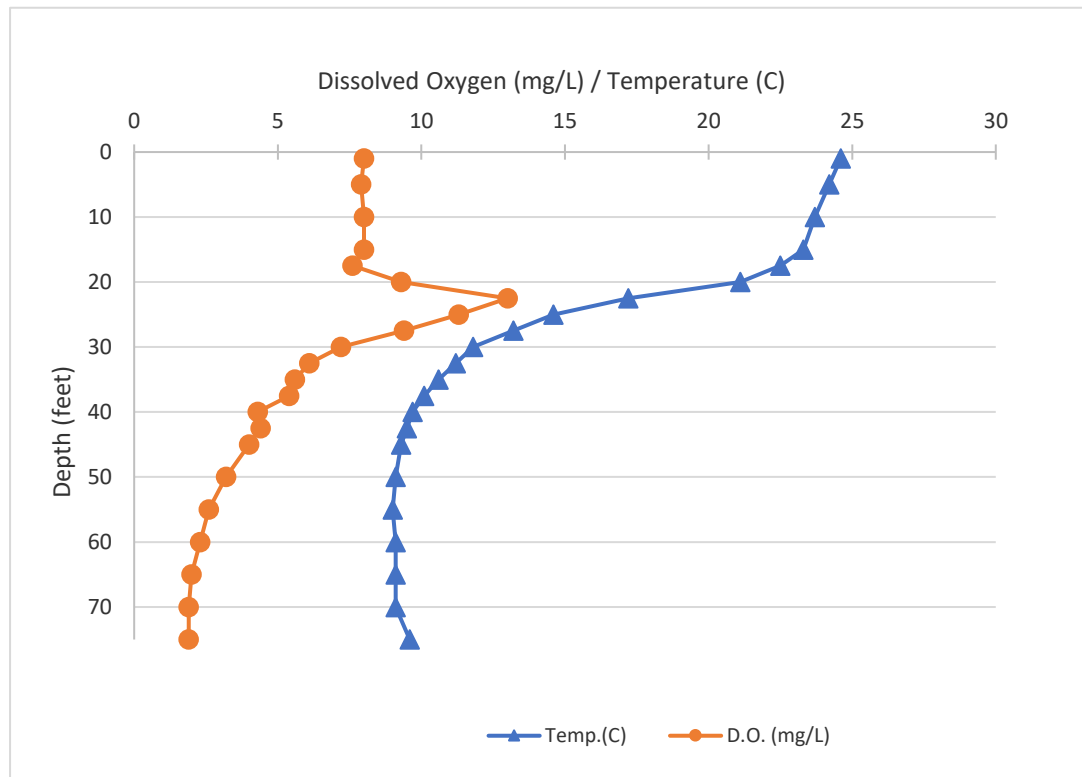
Name: Indian Lake
 County: Kalamazoo
 Site ID: 390305
 Date: 7/14/2021

Dissolved Oxygen and Temperature Profile

Depth (ft)	Temp.(C)	D.O. (mg/L)
1	24.6	8
5	24.2	7.9
10	23.7	8
15	23.3	8
17.5	22.5	7.6
20	21.1	9.3
22.5	17.2	13
25	14.6	11.3
27.5	13.2	9.4
30	11.8	7.2
32.5	11.2	6.1
35	10.6	5.6
37.5	10.1	5.4
40	9.7	4.3
42.5	9.5	4.4
45	9.3	4
50	9.1	3.2
55	9	2.6
60	9.1	2.3
65	9.1	2
70	9.1	1.9
75	9.6	1.9

Lake: Indian Lake (Kalamazoo Co.)

7/14/2021



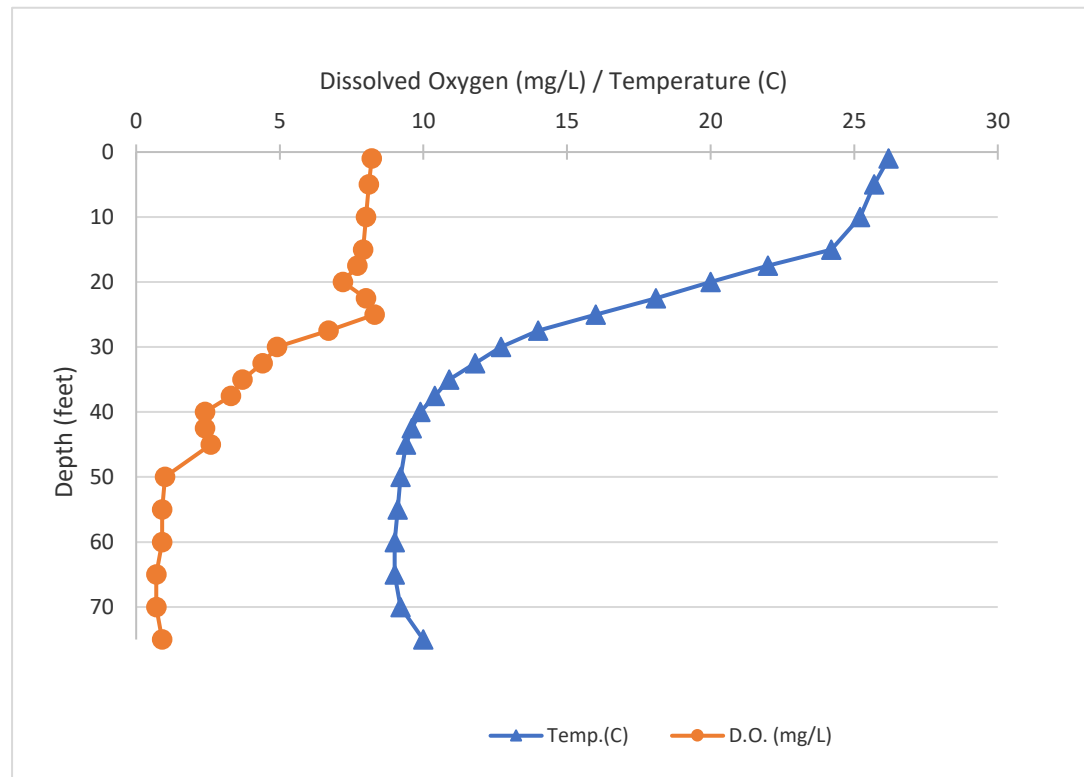
Name: Indian Lake
 County: Kalamazoo
 Site ID: 390305
 Date: 7/31/2021

Dissolved Oxygen and Temperature Profile

Depth (ft)	Temp.(C)	D.O. (mg/L)
1	26.2	8.2
5	25.7	8.1
10	25.2	8
15	24.2	7.9
17.5	22	7.7
20	20	7.2
22.5	18.1	8
25	16	8.3
27.5	14	6.7
30	12.7	4.9
32.5	11.8	4.4
35	10.9	3.7
37.5	10.4	3.3
40	9.9	2.4
42.5	9.6	2.4
45	9.4	2.6
50	9.2	1
55	9.1	0.9
60	9	0.9
65	9	0.7
70	9.2	0.7
75	10	0.9

Lake: Indian Lake (Kalamazoo Co.)

7/31/2021



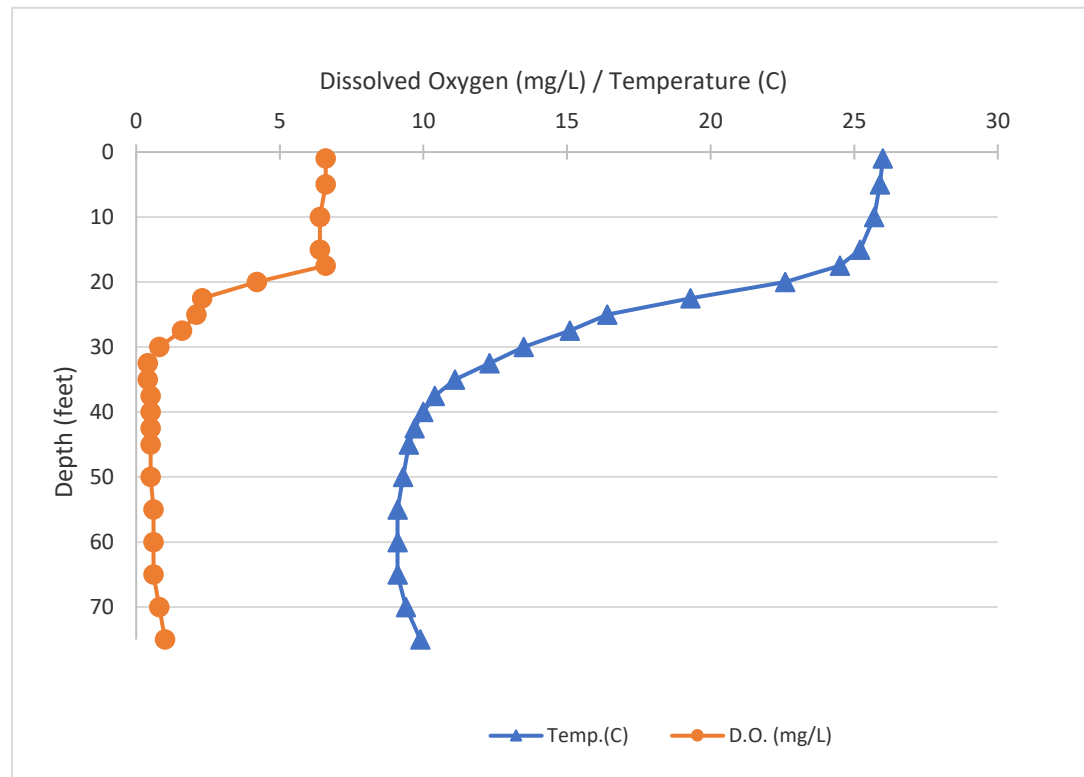
Name: Indian Lake
 County: Kalamazoo
 Site ID: 390305
 Date: 9/2/2021

Dissolved Oxygen and Temperature Profile

Depth (ft)	Temp.(C)	D.O. (mg/L)
1	26	6.6
5	25.9	6.6
10	25.7	6.4
15	25.2	6.4
17.5	24.5	6.6
20	22.6	4.2
22.5	19.3	2.3
25	16.4	2.1
27.5	15.1	1.6
30	13.5	0.8
32.5	12.3	0.4
35	11.1	0.4
37.5	10.4	0.5
40	10	0.5
42.5	9.7	0.5
45	9.5	0.5
50	9.3	0.5
55	9.1	0.6
60	9.1	0.6
65	9.1	0.6
70	9.4	0.8
75	9.9	1

Lake: Indian Lake (Kalamazoo Co.)

9/2/2021



Name: Indian Lake
 County: Kalamazoo
 Site ID: 390305
 Date: 9/15/2021

Dissolved Oxygen and Temperature Profile

Depth (ft)	Temp.(C)	D.O. (mg/L)
1	23.5	7.3
5	23.4	7.3
10	23.4	7.7
15	23.1	7.5
17.5	22.8	7.2
20	22.3	7.2
22.5	20.6	4.8
25	18.3	1.9
27.5	15.7	0.4
30	13.5	0.5
32.5	12.6	0.5
35	11.3	0.5
37.5	10.2	0.6
40	10	0.6
42.5	9.7	0.6
45	9.5	0.6
50	9.3	0.6
55	9.2	0.6
60	9.1	0.7
65	9.2	0.8
70	9.3	0.9
75	9.5	1

Lake: Indian Lake (Kalamazoo Co.)

9/15/2021

