



2021 Data Report for

Pleasant Lake, Washtenaw County

Site ID: 810266

42.20639°N, 83.96167°W

The CLMP is brought to you by:



Michigan Clean
Water Corps

EGL

MICHIGAN DEPARTMENT OF
ENVIRONMENT, GREAT LAKES, AND ENERGY

MICHIGAN STATE
UNIVERSITY



Huron
River
Watershed
Council

About this report:

This report is a summary of the data that have been collected through the Cooperative Lakes Monitoring Program. The contents have been customized for your lake. The first page is a summary of the Trophic Status Indicators of your lake (Secchi Disk Transparency, Chlorophyll-a, Spring Total Phosphorus, and Summer Total Phosphorus). Where data are available, they have been summarized for the most recent field season, five years prior to the most recent field season, and since the first year your lake has been enrolled in the program.

If you did not take 8 or more Secchi disk measurements or 4 or more chlorophyll measurements, there will not be summary data calculated for these parameters. These numbers of measurements are required to ensure that the results are indicative of overall summer conditions.

If you enrolled in Dissolved Oxygen/Temperature, the summary page will have a graph of one of the profiles taken during the late summer (typically August or September). If your lake stratifies, we will use a graph showing the earliest time of stratification, because identifying the timing of this condition and the depth at which it occurs is typically the most important use of dissolved oxygen measurements.

The back of the summary page will be an explanation of the Trophic Status Index and where your lake fits on that scale.

The rest of the report will be aquatic plant summaries, Score the Shore results, and larger graphs, including all Dissolved Oxygen/Temperature Profiles that you recorded. For Secchi Disk, Chlorophyll, and Phosphorus parameters, you need to have two years of data for a graph to make logical sense. Therefore if this is the first year you have enrolled in the CLMP, you will not receive a graph for these parameters.

Remember that some lakes see a lot of fluctuation in these parameters from year to year. Until you have eight years worth of data, consider all trends to be preliminary.

To learn more about the CLMP monitoring parameters or get definitions to unknown terms, check out the CLMP Manual, found at: https://micorps.net/wp-content/uploads/2021/03/CLMP-Manual-2019update2_2021.pdf

Thank you!

The CLMP leadership team would like to thank you for all of your efforts over the past year. The CLMP would not exist without dedicated and hardworking volunteers!

The CLMP Leadership Team is made of: Jo Latimore, Erick Elgin, Jean Roth, Tamara Lipsey, Mike Gallagher, Melissa DeSimone, and Paul Steen

Questions?

If you have questions on this report or believe that the tabulated data for your lake in this report are in error please contact:

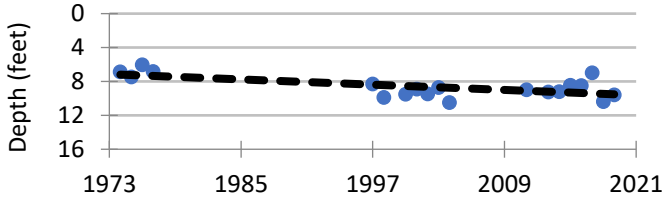
Paul Steen (psteen@hrwc.org), CLMP Data Analyst

Pleasant Lake, Washtenaw County 2021 CLMP Results



Secchi Disk Transparency (feet)

Year	# Readings	Min	Max	Avg	Std. Dev	Carlson TSI
2019	20	6.5	13.5	9.6	2.4	45
2014-2018	93	6.0	12.0	9.6	0.7	46
1974-2013	244	4.0	16.0	8.5	1.3	46
2021 All CLMP Lakes	2817	1.0	50.0	12.7	2.9	42



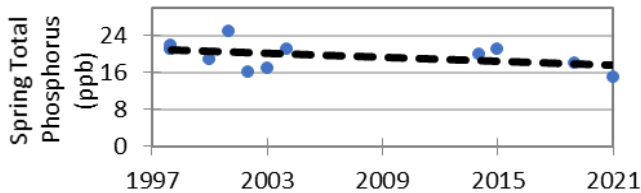
Chlorophyll-a (parts per billion)

Year	# Samples	Min	Max	Med	Std. Dev	Carlson TSI
2021	1	10.0	10.0			
2016-2019	9	1.3	4.9	1.7	1.3	36
2013-2015	10	<1.0	14.0	1.7	1.4	39
2021 All CLMP Lakes	635	< 1.0	42.0	2.2	3.4	39

No graph: Not enough data

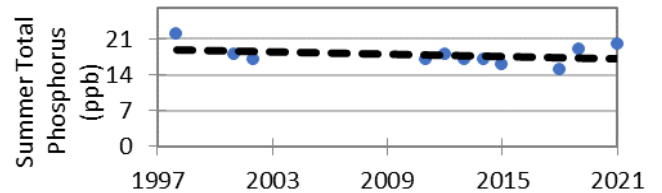
Spring Phosphorus (parts per billion)

Year	# Samples	Min	Max	Avg	Std. Dev
2021	1	15.0	15.0	15.0	NA
2016-2019	1	18.0	18.0	18.0	NA
1998-2015	10	16.0	25.0	20.3	2.5
2021 All CLMP Lakes	220	<= 3	100.0	14.9	11.0

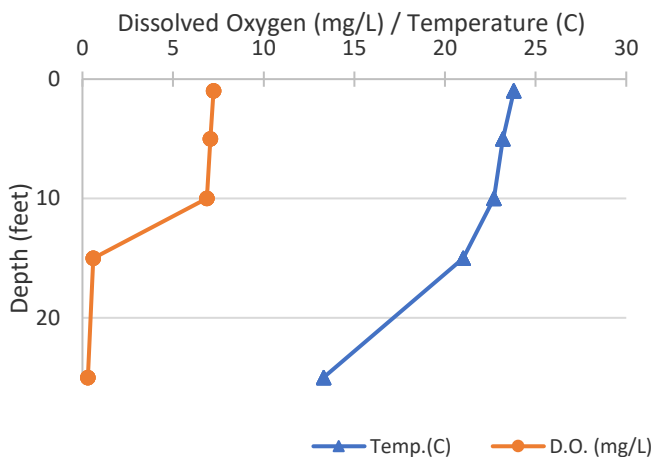


Summer Phosphorus (parts per billion)

Year	# Samples	Min	Max	Avg	Std. Dev	Carlson TSI
2021	1	20.0	20.0	20.0	NA	47
2016-2019	2	15.0	19.0	17.0	2.8	45
1998-2015	8	16.0	22.0	17.8	1.8	46
2021 All CLMP Lakes	281	<= 3	65.0	12.8	9.3	38



Dissolved Oxygen and Temperature Profile 9/14/2021



Summary

Average TSI	2021	2014-2019	1974-2013
Pleasant Lake	47	42	44
All CLMP Lakes	42	40	43

With a TSI score of 47 based on 2021 summer total phosphorus data, this lake is rated between the mesotrophic and eutrophic lake classification.

By mid-summer the lake has stratified and the bottom water is devoid of oxygen. It will be useful to get measurements done in spring and early summer to clarify this timeline.

Long term monitoring shows slight downward slopes on the parameters, indicating a slow movement toward lower nutrient levels in the lake. However, this year's rating relies on total phosphorus alone.

* = No sample received W= Value is less than the detection limit (<3 ppb) T= Value reported is less than the reporting limit (5 ppb).
<1.0 = Chlorophyll-a: Sample value is less than limit of quantification (<1 ppb).

Trophic Status Index Explained

In 1977, limnologist Dr. Robert Carlson developed a numerical scale (0-100) where the numbers indicate the level of nutrient enrichment. Using the proper equations, we can convert results from Summer Total Phosphorus, Secchi Depth, and Chlorophyll-a to this Trophic Status Index (TSI). The TSI numbers are furthermore grouped into general categories (oligotrophic, mesotrophic, eutrophic, and hypereutrophic), to quickly give us a way to understand the general nutrient level of any lake.

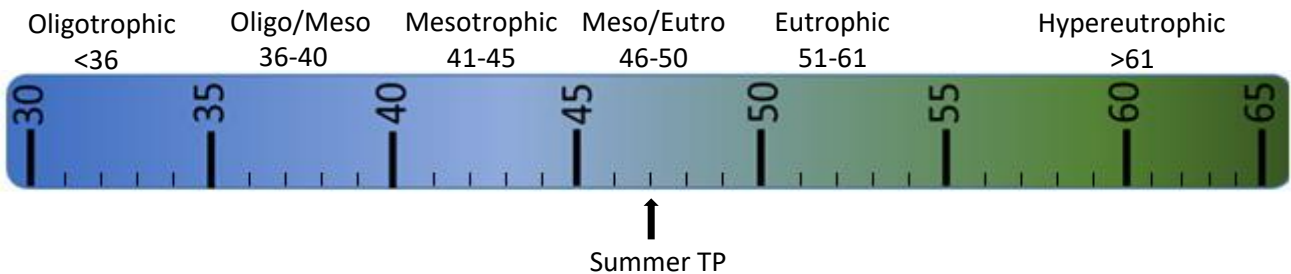
The tables below give the results-to-TSI conversions for the water quality data ranges normally seen in the CLMP. The formulas for this conversion can be found in the CLMP manual (link is on page 2 of this report).

Phosphorus (ppb)	TSI Value
<5	<27
6	30
8	34
10	37
12	40
15	43
18	46
21	48
24	50
32	54
36	56
42	58
48	60
>50	>61

Secchi Depth (ft)	TSI Value
>30	<28
25	31
20	34
15	38
12	42
10	44
7.5	48
6	52
4	57
<3	>61

Chlorophyll-a (ppb)	TSI Value
<1	<31
2	37
3	41
4	44
6	48
8	51
12	55
16	58
22	61
>22	>61

TSI for Pleasant Lake in 2021	
Average	
Secchi Disk	
Summer TP	47
Chlorophyll-a	



Oligotrophic: Generally deep and clear lakes with little aquatic plant or algae growth. These lakes maintain sufficient dissolved oxygen in the cool, deep-bottom waters during late summer to support cold water fish, such as trout and whitefish.

Mesotrophic: Lakes that fall between oligotrophic and eutrophic. Mid-ranged amounts of nutrients.

Eutrophic: Highly productive eutrophic lakes are generally shallow, turbid, and support abundant aquatic plant growth. In deep eutrophic lakes, the cool bottom waters usually contain little or no dissolved oxygen. Therefore, these lakes can only support warm water fish, such as bass and pike.

Hypereutrophic: A specialized category of eutrophic lakes. These lakes exhibit extremely high productivity, such as nuisance algae and weed growth.

Pleasant Lake, Washtenaw County 2021 CLMP Aquatic Plant Results



Pleasant Lake does not have aquatic plant data available for 2021. Consider enrolling in an aquatic plant parameter next year.

Why is monitoring aquatic plants important?

A major component of the plant community in lakes is the large, leafy, rooted plants. Compared to the microscopic algae the rooted plants are large. Sometimes they are collectively called the “macrophytes” (“macro” meaning large and “phyte” meaning plant). These macrophytes are the plants that people sometimes complain about and refer to as lake weeds.

Far from being weeds, macrophytes or rooted aquatic plants are a natural and essential part of the lake, just as grasses, shrubs and trees are a natural part of the land. Their roots are a fabric for holding sediments in place, reducing erosion and maintaining bottom stability. They provide habitat for fish, including structure for food organisms, nursery areas, foraging and predator avoidance. Waterfowl, shore birds and aquatic mammals use plants to forage on and within, and as nesting materials and cover.

Though plants are important to the lake, overabundant plants can negatively affect fish populations, fishing and other recreational activities. Rooted plant populations increase in abundance as nutrient concentrations increase in the lake. As lakes become more eutrophic rooted plant populations increase. They are rarely a problem in oligotrophic lakes, only occasionally a problem in mesotrophic lakes, sometimes a problem in eutrophic lakes, and often a problem in hypereutrophic lakes.

However, sometimes a lake is invaded by an aquatic plant species that is not native to Michigan. In these cases, even nutrient poor oligotrophic lakes can be threatened. Some of these exotic plants, like Curly-leaf Pondweed, Eurasian Milfoil, Starry Stonewort, and Hydrilla can be extremely disruptive to the lake’s ecosystem and recreational activities.

To avoid a takeover by exotic plants, it is necessary to use Integrated Pest Management (IPM) strategies: monitoring, early detection, rapid response, maintenance control, and preventive management. For more information on these strategies, check out Integrated Pest Management for Nuisance Exotics in Michigan Inland Lakes (MSU Extension Water Quality Publication WQ-56, available at <https://micorps.net/lake-monitoring/clmp-documents/>)

The CLMP offers two parameters on aquatic plants. In the Exotic Aquatic Plant Watch, volunteers concentrate on monitoring and early detection of exotic invasive plants only. In Aquatic Plant Identification and Mapping, volunteers identify all native and non-native plants. In both parameters, volunteers create lake maps or use digital tools to georeference where the plants are found.

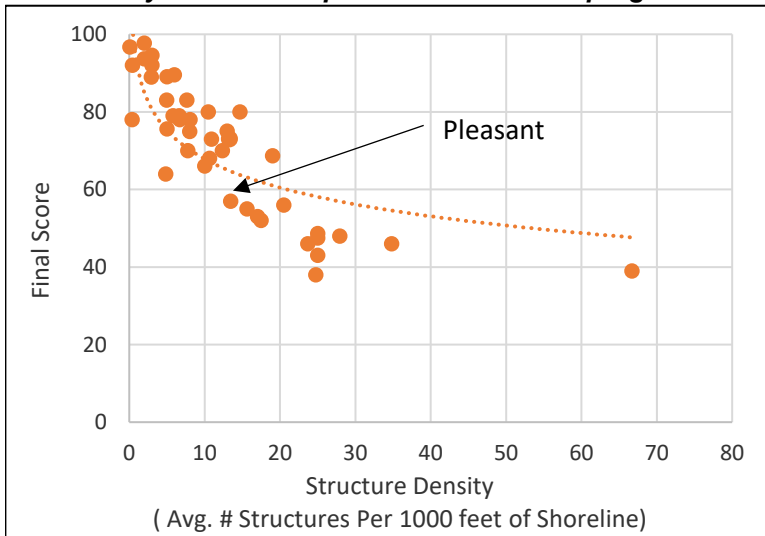
Pleasant Lake, Washtenaw County 2015 Score the Shore Results



The Score the Shore Habitat Assessment was conducted on Pleasant Lake in 2015.

This assessment involves rating 1000 foot sections of shoreline for aquatic vegetation, shoreline vegetation, erosion, and erosion control practices (like sea walls). Each shoreline section is given three scores ranging from 0-100 for the categories of Littoral, Riparian, and Erosion Management. The three scores are averaged to produce a average section score. Then a total score is given to the entire lake by averaging all of the average section scores. A score of 0 indicates a shoreline that has been extremely disturbed by human impacts and no natural shoreline remains. A score of 100 indicates a shoreline that is nearly pristine.

How does your lake compare to others in the program?



Pleasant Lake:	
Number of Sections:	15
Number of Structures:	202
Structure Density:	13.5
Final Score:	57

All 42 Participating Lakes from 2015-2018:	
Avg. Number of Sections:	16.3
Avg. Number of Structures:	248.5
Avg. Structure Density:	15.2
Avg. Final Score:	70.5

There is a very tight relationship between Final Score and Structure Density. It will be interesting to see if and how this changes as more lakes go through this scoring process.

Analysis specific to Pleasant Lake:

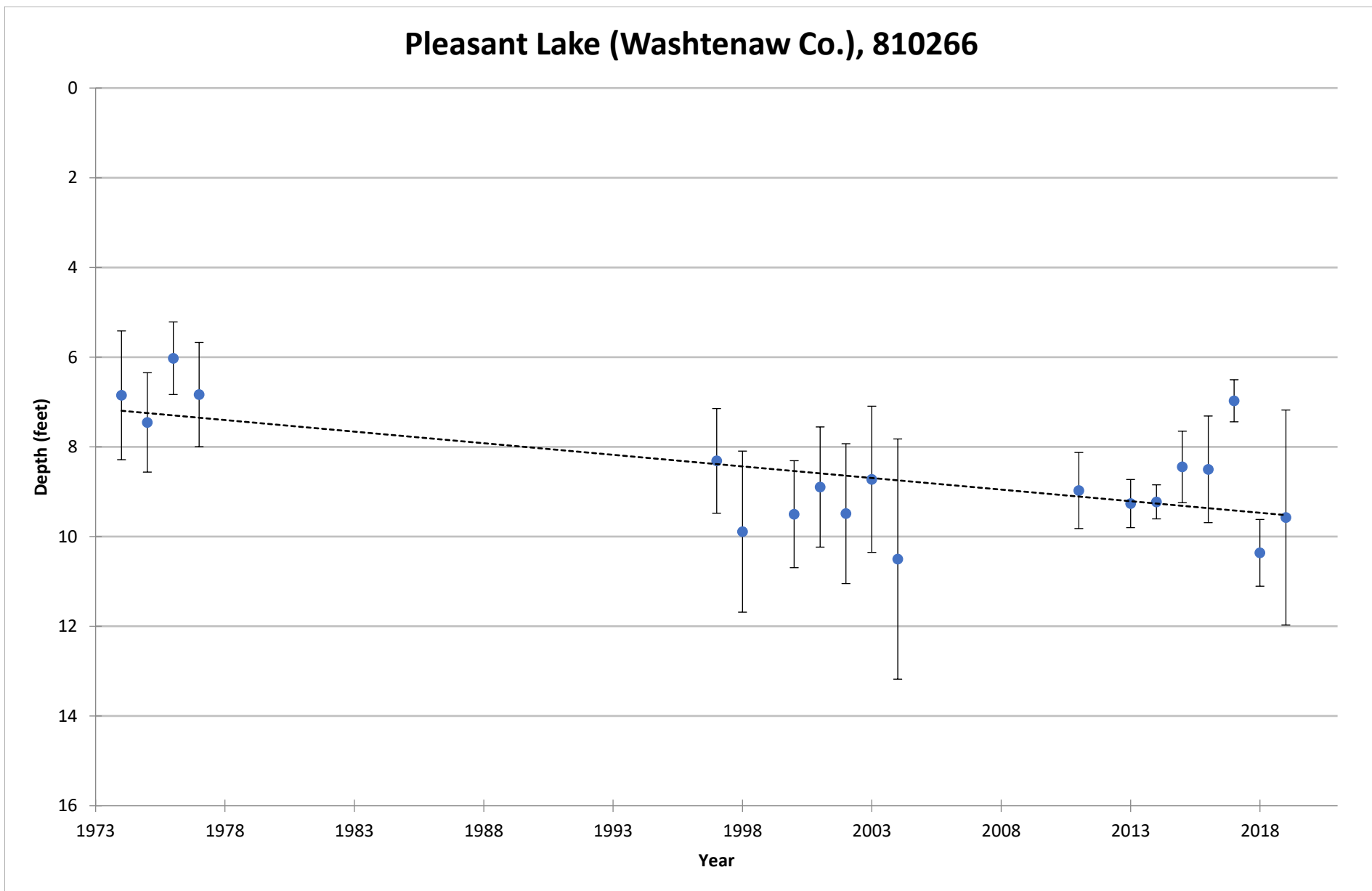
Pleasant Lake scored well in the erosion management score, meaning that there was a low amount of sea walls and other shoreline erosion structures.

Both the riparian score and the littoral score fall in the low end of the "Fair" range, meaning that these would be places to make improvements. Reducing the amount of mowed grass and increasing the amount of unmowed vegetation would be the primary way to boost the riparian score, while increasing aquatic vegetation, allowing fallen trees to remain in the water, and reducing shoreline erosion would be the way to boost the littoral score.

The health of the shoreline habitat varies greatly from place to place in Pleasant Lake. One section is considered good, 8 are fair, and 6 are poor. The worst scoring section was section 1, which had a total score of 38 (littoral score of 31, riparian score of 27, and shoreline management score of 56).

COOPERATIVE LAKES MONITORING PROGRAM
SUMMER MEAN TRANSPARENCY

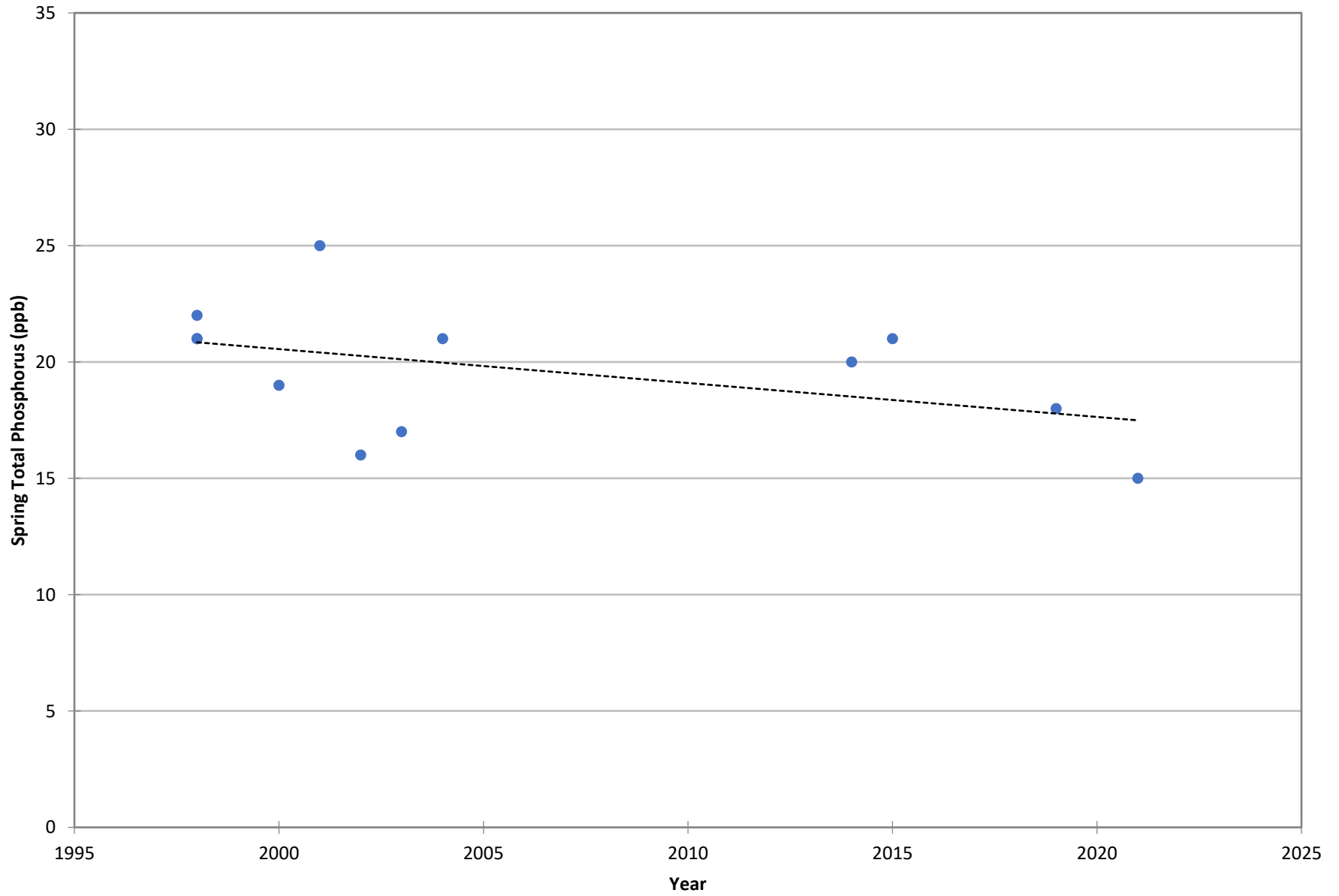
Pleasant Lake (Washtenaw Co.), 810266



Vertical bars indicate standard deviation

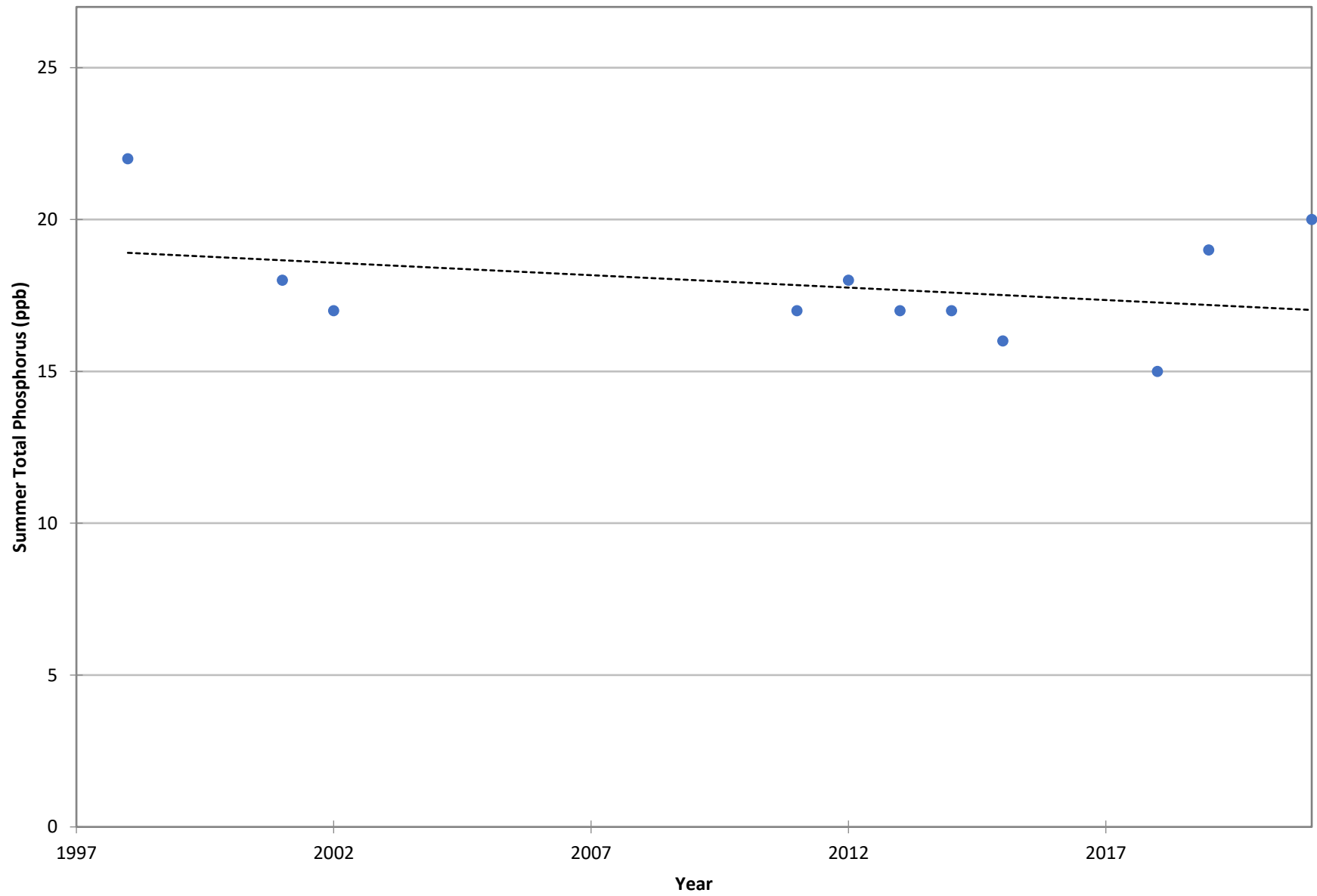
COOPERATIVE LAKES MONITORING PROGRAM
SPRING TOTAL PHOSPHORUS

Pleasant Lake (Washtenaw Co.), 810266



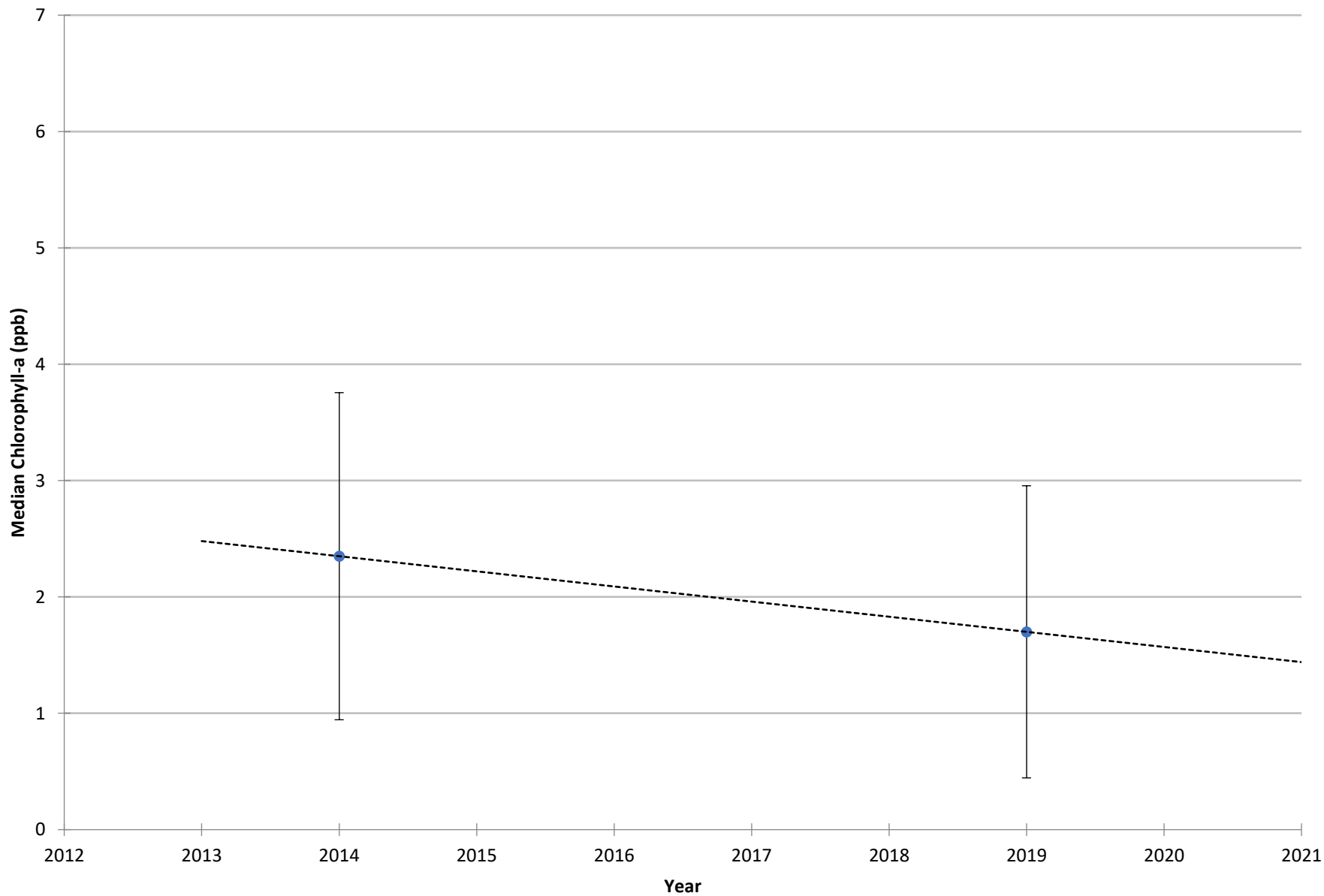
COOPERATIVE LAKES MONITORING PROGRAM
SUMMER TOTAL PHOSPHORUS

Pleasant Lake (Washtenaw Co.), 810266



COOPERATIVE LAKES MONITORING PROGRAM
SUMMER MEDIAN CHLOROPHYLL-A

Pleasant Lake (Washtenaw Co.), 810266



Vertical bars indicate standard deviation

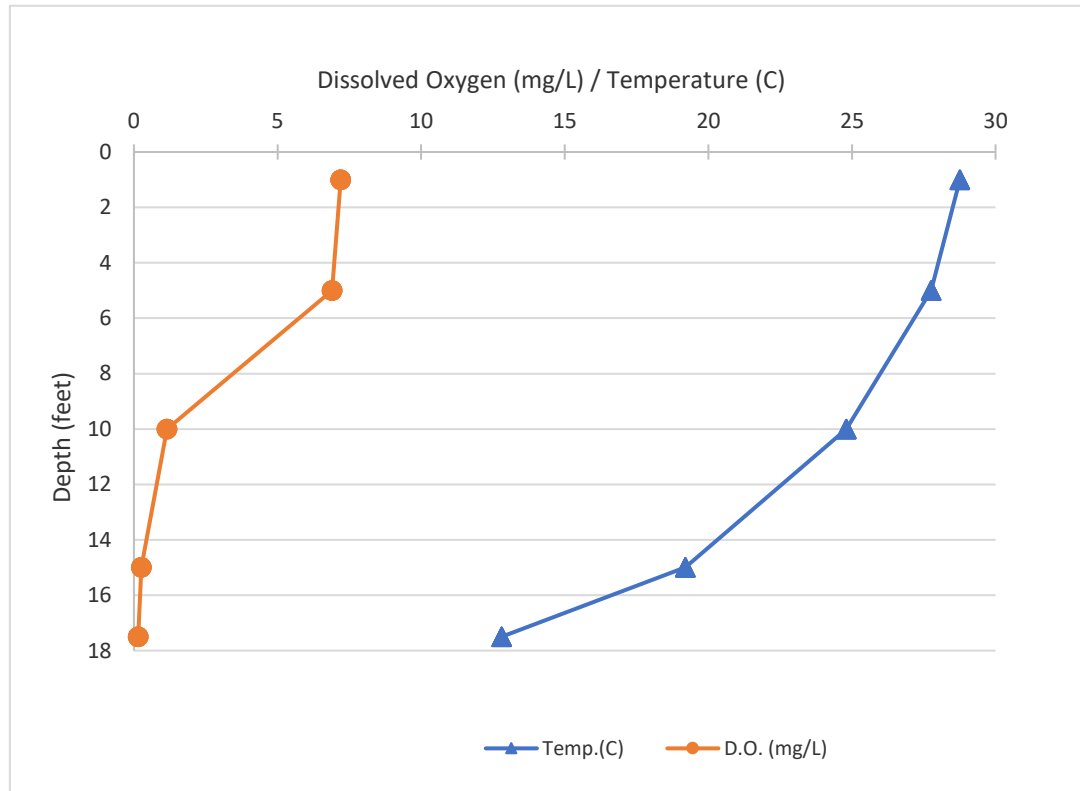
Name: Pleasant Lake
 County: Washtenaw
 Site ID: 810266
 Date: 8/31/2021

Dissolved Oxygen and Temperature Profile

Depth (ft)	Temp.(C)	D.O. (mg/L)
1	28.76	7.2
1	28.76	7.2
1	28.76	7.2
1	28.76	7.2
5	27.76	6.9
5	27.76	6.9
5	27.76	6.9
5	27.76	6.9
10	24.8	1.15
10	24.8	1.15
10	24.8	1.15
10	24.8	1.15
15	19.2	0.26
15	19.2	0.26
15	19.2	0.26
15	19.2	0.26
17.5	12.8	0.15
17.5	12.8	0.15
17.5	12.8	0.15
17.5	12.8	0.15

Lake: Pleasant Lake (Washtenaw Co.)

8/31/2021



Name: Pleasant Lake
 County: Washtenaw
 Site ID: 810266
 Date: 9/14/2021

Dissolved Oxygen and Temperature Profile

Depth (ft)	Temp.(C)	D.O. (mg/L)
1	23.8	7.23
1	23.8	7.23
1	23.8	7.23
1	23.8	7.23
5	23.2	7.05
5	23.2	7.05
5	23.2	7.05
5	23.2	7.05
10	22.7	6.86
10	22.7	6.86
10	22.7	6.86
10	22.7	6.86
15	21	0.6
15	21	0.6
15	21	0.6
15	21	0.6
25	13.3	0.3
25	13.3	0.3
25	13.3	0.3
25	13.3	0.3

Lake: Pleasant Lake (Washtenaw Co.)

9/14/2021

