



# 2024 Data Report for Crystal Lake, Hillsdale County

Site ID: 300269

42.0642°N, 84.4153°W

The CLMP is brought to you by:



Michigan Clean  
Water Corps

**EGLE**

MICHIGAN DEPARTMENT OF  
ENVIRONMENT, GREAT LAKES, AND ENERGY

MICHIGAN STATE  
UNIVERSITY



**About this report:**

This report is a summary of the data that have been collected through the Cooperative Lakes Monitoring Program. The contents have been customized for your lake. The first page is a summary of the Trophic Status Indicators of your lake (Secchi Disk Transparency, Chlorophyll-a, Spring Total Phosphorus, and Summer Total Phosphorus). Where data are available, they have been summarized for the most recent field season, five years prior to the most recent field season, and since the first year your lake has been enrolled in the program.

If you did not take 8 or more Secchi disk measurements or 4 or more chlorophyll measurements, there will not be summary data calculated for these parameters. These numbers of measurements are required to ensure that the results are indicative of overall summer conditions.

If you enrolled in Dissolved Oxygen/Temperature, the summary page will have a graph of one of the profiles taken during the late summer (typically August or September). If your lake stratifies, we will use a graph showing the earliest time of stratification, because identifying the timing of this condition and the depth at which it occurs is typically the most important use of dissolved oxygen measurements.

The back of the summary page will be an explanation of the Trophic Status Index and where your lake fits on that scale.

The rest of the report will be aquatic plant summaries, Score the Shore results, and larger graphs, including all Dissolved Oxygen/Temperature Profiles that you recorded. For Secchi Disk, Chlorophyll, and Phosphorus parameters, you need to have two years of data for a graph to make logical sense. Therefore if this is the first year you have enrolled in the CLMP, you will not receive a graph for these parameters.

Remember that some lakes see a lot of fluctuation in these parameters from year to year. Until you have eight years worth of data, consider all trends to be preliminary.

To learn more about the CLMP monitoring parameters or get definitions to unknown terms, check out the CLMP Manual, found at: [https://micorps.net/wp-content/uploads/2021/03/CLMP-Manual-2019update2\\_2021.pdf](https://micorps.net/wp-content/uploads/2021/03/CLMP-Manual-2019update2_2021.pdf)

**Thank you!**

The CLMP leadership team would like to thank you for all of your efforts over the past year. The CLMP would not exist without dedicated and hardworking volunteers!

The CLMP Leadership Team is made of: Jo Latimore, Erick Elgin, Jean Roth, Tamara Lipsey, Mike Gallagher, Melissa DeSimone, and Paul Steen

**Questions?**

If you have questions on this report or believe that the tabulated data for your lake in this report are in error please contact:

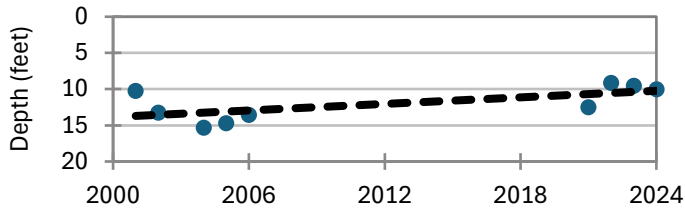
**Paul Steen (psteen@hrwc.org), CLMP Data Analyst**

# Crystal Lake, Hillsdale County 2024 CLMP Results



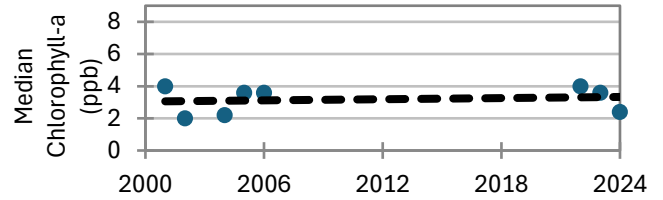
## Secchi Disk Transparency (feet)

Year	# Readings	Min	Max	Average	Std. Dev	Carlson TSI
2024	19	6.0	14.0	10.0	2.6	44
2019-2023	55	6.0	22.5	10.4	2.7	43
2001-2018	114	3.0	22.0	13.4	2.5	40
2024 All CLMP Lakes	3348	0.5	85.0	11.7	6.2	43



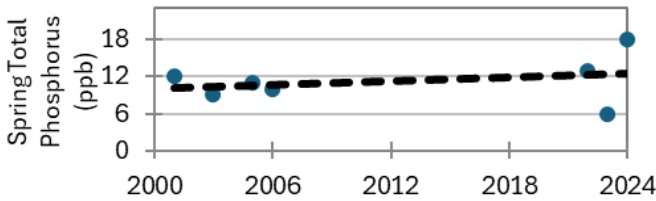
## Chlorophyll-a (parts per billion)

Year	# Samples	Min	Max	Median	Std. Dev	Carlson TSI
2024	5	1.9	3.5	2.4	0.6	39
2019-2023	10	<1.0	6.7	3.8	1.7	44
2001-2018	28	<1.0	5.0	3.8	1.0	43
2024 All CLMP Lakes	708	< 1.0	63.0	2.8	7.3	41



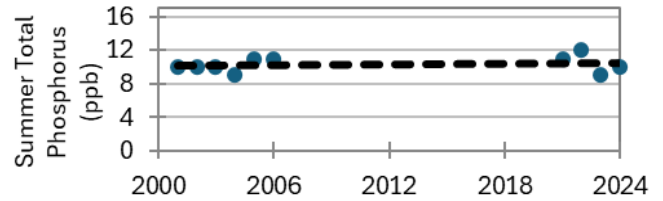
## Spring Phosphorus (parts per billion)

Year	# Samples	Min	Max	Average	Std. Dev
2024	1	18.0	18.0	18.0	NA
2019-2023	2	6.0	13.0	9.5	4.9
2001-2018	4	9.0	12.0	10.5	1.3
2024 All CLMP Lakes	259	<= 5	140.0	14.3	39.7



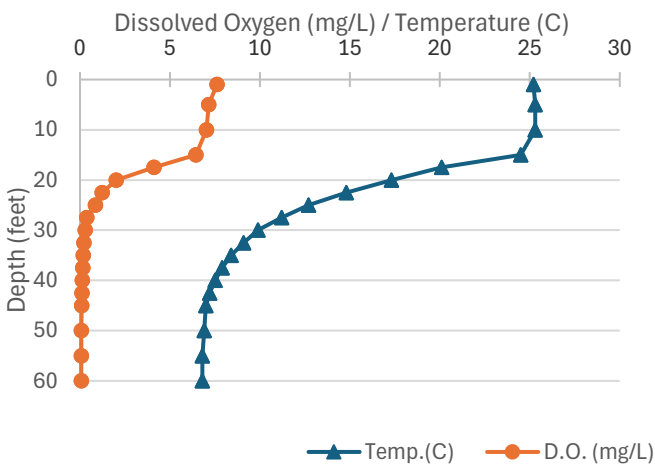
## Summer Phosphorus (parts per billion)

Year	# Samples	Min	Max	Average	Std. Dev	Carlson TSI
2024	1	10.0	10.0	10.0	NA	37
2019-2023	3	9.0	12.0	10.7	1.5	38
2001-2018	6	9.0	11.0	10.2	0.8	38
2024 All CLMP Lakes	200	<= 5	4.0	190.0	14.9	18



## Dissolved Oxygen and Temperature Profile

8/8/2024



## Summary

Average TSI	2024	2021-2023	2001-2018
Crystal Lake	40	42	39
All CLMP Lakes	41	43	40

With an average TSI score of 40 based on 2024 Secchi transparency, chlorophyll-a, and summer total phosphorus data, this lake is rated as mesotrophic.

Monitoring data indicates that this lake is devoid of oxygen in the bottom waters by late summer. More data is required to establish the point at which stratification begins during the monitoring season.

There are not significant changes in the monitoring data from monitoring done in the early 2000s vs. monitoring over the last several years.

\* = Minimum # samples not met for average/median/TSI value

<1.0 = Chlorophyll-a: Sample value is less than limit of quantification (<1 ppb).

W= Value is less than the detection limit (<3 ppb) T = Value reported is less than the reporting limit (5 ppb)







# Trophic Status Index Explained

In 1977, limnologist Dr. Robert Carlson developed a numerical scale (0-100) where the numbers indicate the level of nutrient enrichment. Using the proper equations, we can convert results from Summer Total Phosphorus, Secchi Depth, and Chlorophyll-a to this Trophic Status Index (TSI). The TSI numbers are furthermore grouped into general categories (oligotrophic, mesotrophic, eutrophic, and hypereutrophic), to quickly give us a way to understand the general nutrient level of any lake.

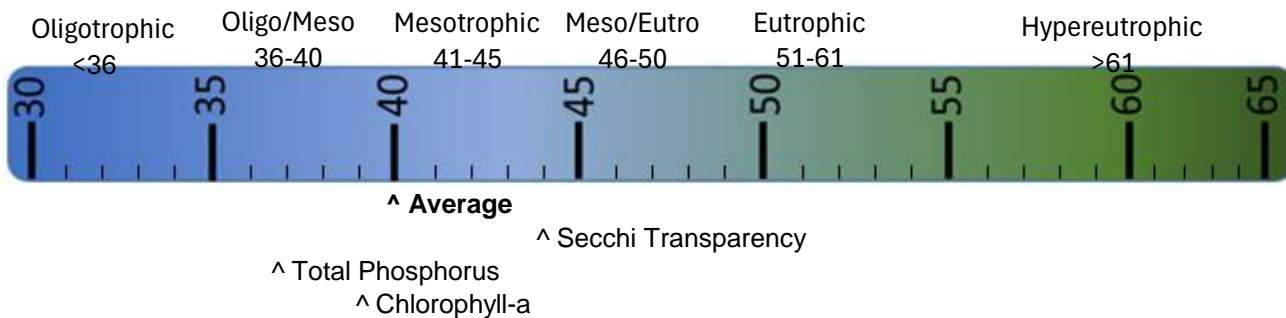
The tables below give the results-to-TSI conversions for the water quality data ranges normally seen in the CLMP. The formulas for this conversion can be found in the CLMP manual (link is on page 2 of this report).

Phosphorus (ppb)	TSI Value
<5	<27
6	30
8	34
10	37
12	40
15	43
18	46
21	48
24	50
32	54
36	56
42	58
48	60
>50	>61

Secchi Depth (ft)	TSI Value
>30	<28
25	31
20	34
15	38
12	42
10	44
7.5	48
6	52
4	57
<3	>61

Chlorophyll-a (ppb)	TSI Value
<1	<31
2	37
3	41
4	44
6	48
8	51
12	55
16	58
22	61
>22	>61

TSI for Crystal Lake in 2024	
Average	40
Secchi Disk	44
Summer TP	37
Chlorophyll-a	39



**Oligotrophic:** Generally deep and clear lakes with little aquatic plant or algae growth. These lakes maintain sufficient dissolved oxygen in the cool, deep-bottom waters during late summer to support cold water fish, such as trout and whitefish.

**Mesotrophic:** Lakes that fall between oligotrophic and eutrophic. Mid-ranged amounts of nutrients.

**Eutrophic:** Highly productive eutrophic lakes are generally shallow, turbid, and support abundant aquatic plant growth. In deep eutrophic lakes, the cool bottom waters usually contain little or no dissolved oxygen. Therefore, these lakes can only support warm water fish, such as bass and pike.

**Hypereutrophic:** A specialized category of eutrophic lakes. These lakes exhibit extremely high productivity, such as nuisance algae and weed growth.





# Crystal Lake, Hillsdale County 2021 Exotic Aquatic Plant Watch Results



The Exotic Aquatic Plant Watch was conducted on Crystal Lake in 2021.

This survey involves sampling at multiple locations around the lake to detect new invaders, and document the extent of known invaders. While notes on other plant species may be recorded during the survey, the effort focuses on five highly invasive species: Eurasian watermilfoil (*Myriophyllum spicatum*), starry stonewort (*Nitellopsis obtusa*), curly-leaf pondweed (*Potamogeton crispus*), European Frogbit (*Hydrocharis morsus-ranae*), and Hydrilla (*Hydrilla verticillata*).

The table below summarizes the results of the 2021 Exotic Aquatic Plant Watch.

Crystal Lake, Hillsdale County 2021 Exotic Aquatic Plant Watch Results		
Survey Date(s): June 25		
<u>Species</u>	<u>Status</u>	<u>Comments</u>
Eurasian watermilfoil	FOUND	Found in 2 of 4 sites surveyed.
Starry stonewort	FOUND	Found in 3 of 4 sites surveyed.
Curly-leaf pondweed	FOUND	Found in all 4 sites surveyed.
European Frogbit	not found	
Hydrilla	not found	

Visit the MiCorps Data Exchange (<https://micorps.net>) or contact the lead volunteer on your lake for more details on the survey, including sampling locations, maps, and abundance information, and for information on past surveys.



# Score the Shore

Crystal Lake does not have Score the Shore results.

## **Why is the Score the Shore parameter important?**

Healthy shorelines are an important and valuable component of the lake ecosystem. The shoreline area is a transition zone between water and land, and should be a very diverse environment that provides habitat for a great variety of fish, plants, birds, and other animals. A healthy shoreline area is also essential for maintaining water quality, slowing runoff, and limiting erosion.

However, Michigan's inland lake shorelines are threatened. Extensive development, often combined with poor shoreline management practices, can reduce or eliminate natural shoreline habitat and replace it with lawn and artificial erosion control such as sea walls and rock. As a result, shoreline vegetation is dramatically altered, habitat is lost, and water quality declines.

Therefore, in 2019 the MiCorps Cooperative Lakes Monitoring Program introduced a new monitoring program – Score the Shore – that enables volunteers to assess the quality of their lake's shoreline habitat.

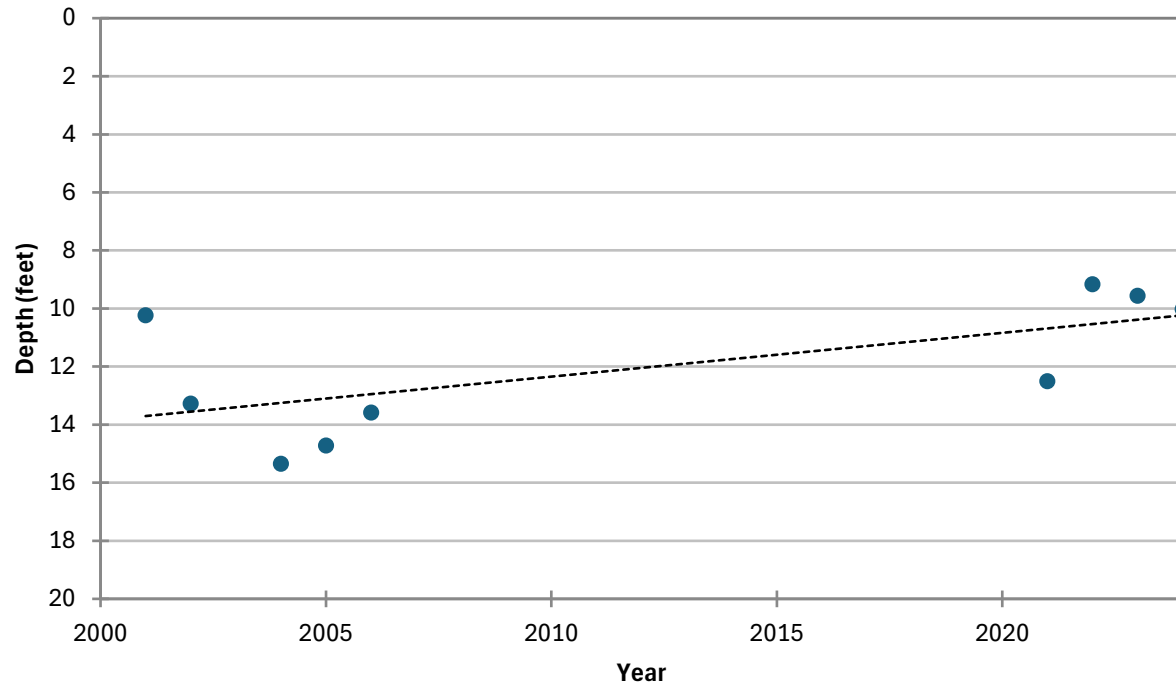
The information gathered during this assessment will allow lake communities to identify high-quality areas that can be protected, as well as opportunities for improvement. Score the Shore data, combined with educational resources describing the value of healthy shorelines and how to restore and maintain them, can be incorporated into lake management planning and used for educating lakefront property owners. The Michigan Natural Shoreline Partnership (MNSP) is a collaboration of agencies and professionals that promotes natural shoreline practices to protect Michigan's inland lakes. The MNSP website ([www.mishorelinepartnership.org](http://www.mishorelinepartnership.org)) includes materials and information that can be used in educational efforts. MNSP also offers training for professional educators and landscape contractors, and maintains a list of trained educators who may be available to speak to your community about natural shorelines.

Score the Shore data, just like all CLMP data, will also be available to any interested parties through the MiCorps Data Exchange ([www.micorps.net](http://www.micorps.net)). State agency staff and researchers regularly access CLMP data to better understand and manage Michigan's inland lakes.

Score the Shore is a descriptive process for assessing shoreline quality on Michigan's inland lakes. It is also a valuable educational tool. Score the Shore is not a regulatory program, nor is it intended to tell people what they can and cannot do on their property. The Michigan Department of Environmental Quality's Inland Lakes and Streams Program has responsibility for shoreline protection on public lakes. To learn about their shoreline protection program, including construction permitting and recommendations for shoreline management, visit [www.mi.gov/deqinlandlakes](http://www.mi.gov/deqinlandlakes).

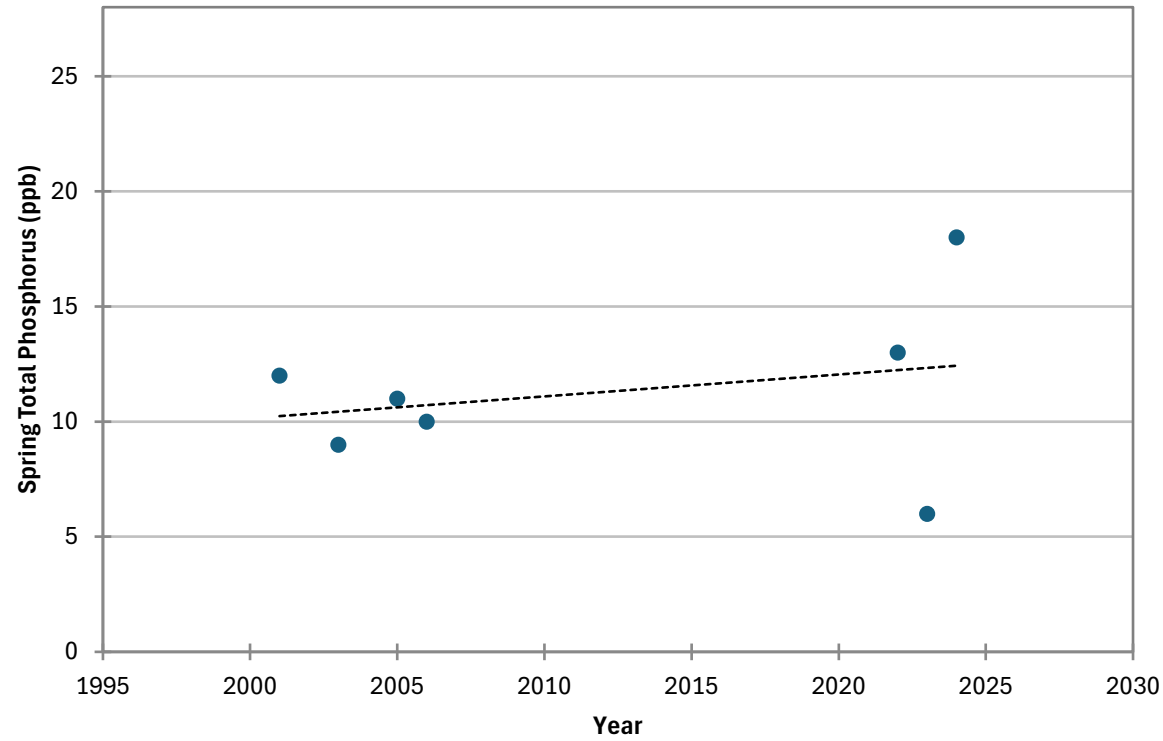
COOPERATIVE LAKES MONITORING PROGRAM  
SUMMER MEAN TRANSPARENCY

**Crystal Lake (Hillsdale Co.), 300269**



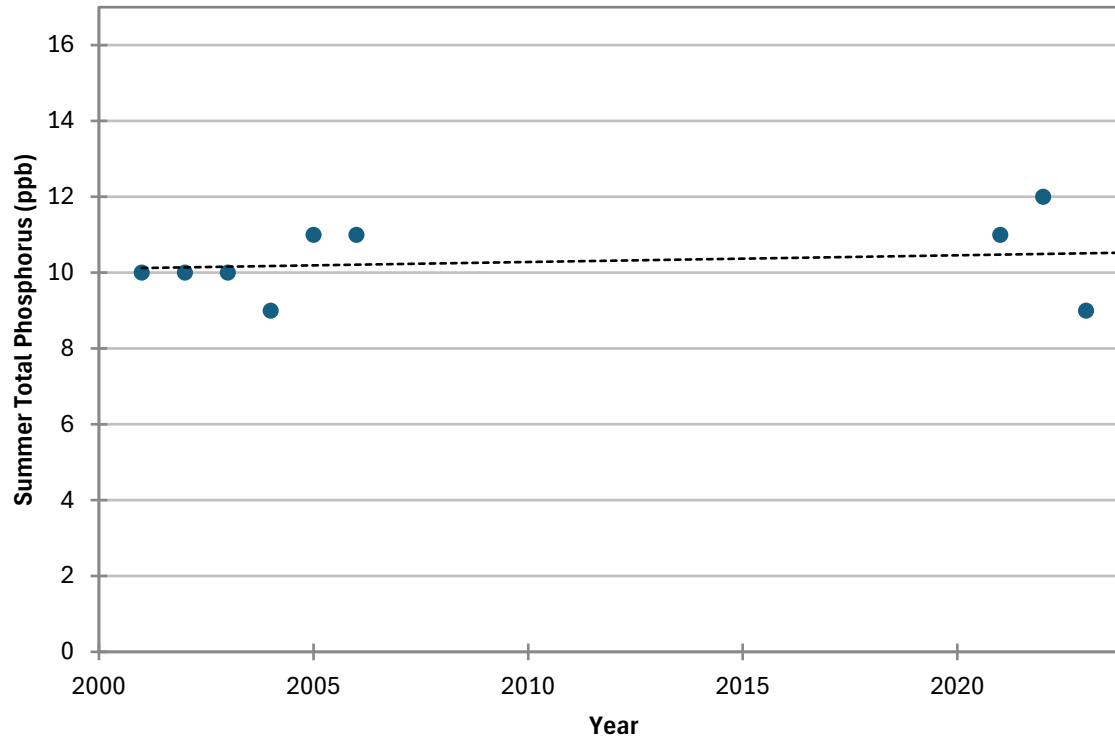
COOPERATIVE LAKES MONITORING PROGRAM  
SPRING TOTAL PHOSPHORUS

**Crystal Lake (Hillsdale Co.), 300269**



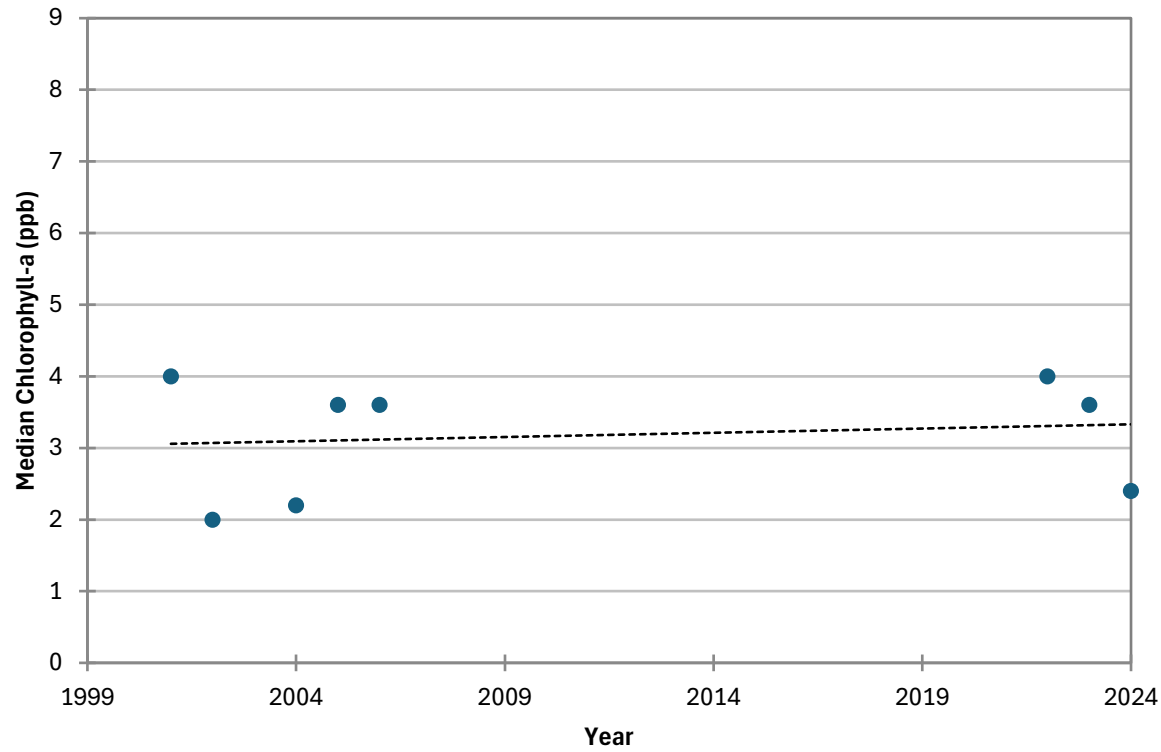
COOPERATIVE LAKES MONITORING PROGRAM  
SUMMER TOTAL PHOSPHORUS

**Crystal Lake (Hillsdale Co.), 300269**



COOPERATIVE LAKES MONITORING PROGRAM  
SUMMER MEDIAN CHLOROPHYLL-A

**Crystal Lake (Hillsdale Co.), 300269**



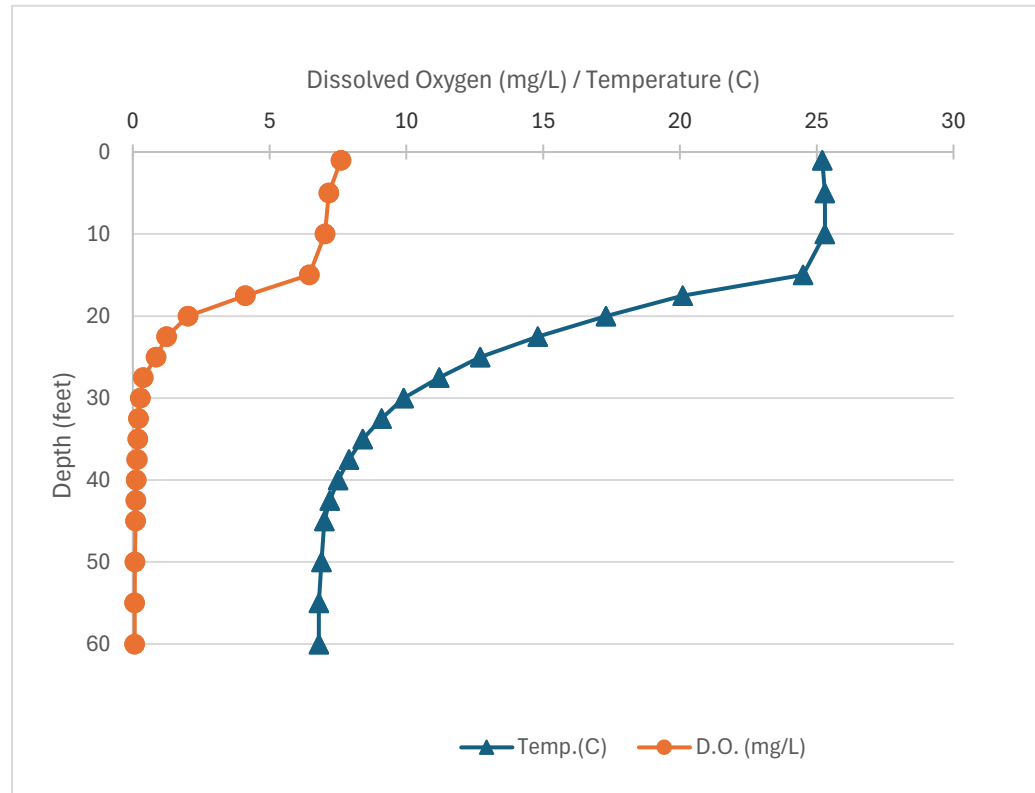
Name: Crystal Lake  
 County: Hillsdale  
 Site ID: 300269  
 Date: 8/8/2024

### Dissolved Oxygen and Temperature Profile

Depth (ft)	Temp.(C)	D.O. (mg/L)
1	25.2	7.61
1	25.2	7.61
5	25.3	7.16
5	25.3	7.16
10	25.3	7.03
10	25.3	7.03
15	24.5	6.45
15	24.5	6.45
17.5	20.1	4.11
17.5	20.1	4.11
20	17.3	2.02
20	17.3	2.02
22.5	14.8	1.23
22.5	14.8	1.23
25	12.7	0.85
25	12.7	0.85
27.5	11.2	0.38
27.5	11.2	0.38
30	9.9	0.28
30	9.9	0.28
32.5	9.1	0.21
32.5	9.1	0.21
35	8.4	0.18
35	8.4	0.18
37.5	7.9	0.14
37.5	7.9	0.17
40	7.5	0.12
40	7.5	0.12
42.5	7.2	0.11
42.5	7.2	0.11
45	7	0.1
45	7	0.1
50	6.9	0.08
50	6.9	0.08

Lake: Crystal Lake (Hillsdale Co.)

8/8/2024





55	6.8	0.07
55	6.8	0.07
60	6.8	0.07
60	6.8	0.07

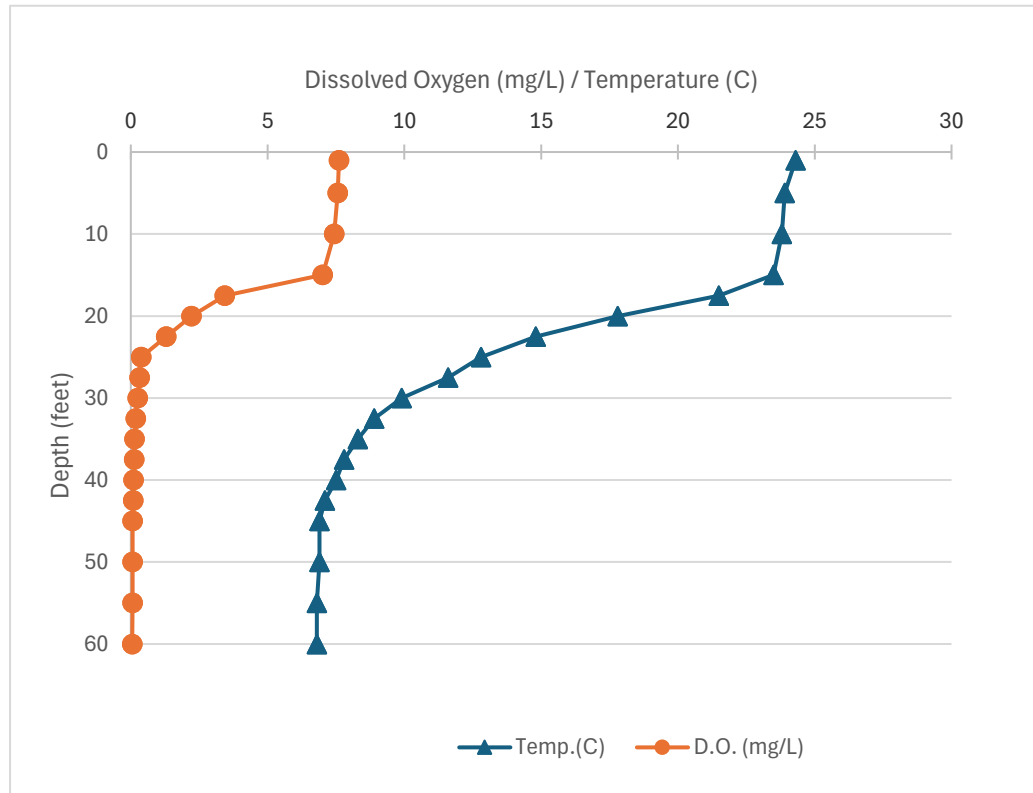
Name: Crystal Lake  
 County: Hillsdale  
 Site ID: 300269  
 Date: 8/13/2024

### Dissolved Oxygen and Temperature Profile

Depth (ft)	Temp.(C)	D.O. (mg/L)
1	24.3	7.61
1	24.3	7.61
5	23.9	7.56
5	23.9	7.56
10	23.8	7.44
10	23.8	7.44
15	23.5	7.01
15	23.5	7.01
17.5	21.5	3.43
17.5	21.5	3.43
20	17.8	2.22
20	17.8	2.22
22.5	14.8	1.29
22.5	14.8	1.29
25	12.8	0.38
25	12.8	0.38
27.5	11.6	0.32
27.5	11.6	0.32
30	9.9	0.25
30	9.9	0.25
32.5	8.9	0.18
32.5	8.9	0.18
35	8.3	0.14
35	8.3	0.14
37.5	7.8	0.12
37.5	7.8	0.12
40	7.5	0.1
40	7.5	0.1
42.5	7.1	0.09
42.5	7.1	0.09
45	6.9	0.07
45	6.9	0.07
50	6.9	0.06
50	6.9	0.06

Lake: Crystal Lake (Hillsdale Co.)

8/13/2024



55	6.8	0.06
55	6.8	0.06
60	6.8	0.05
60	6.8	0.05

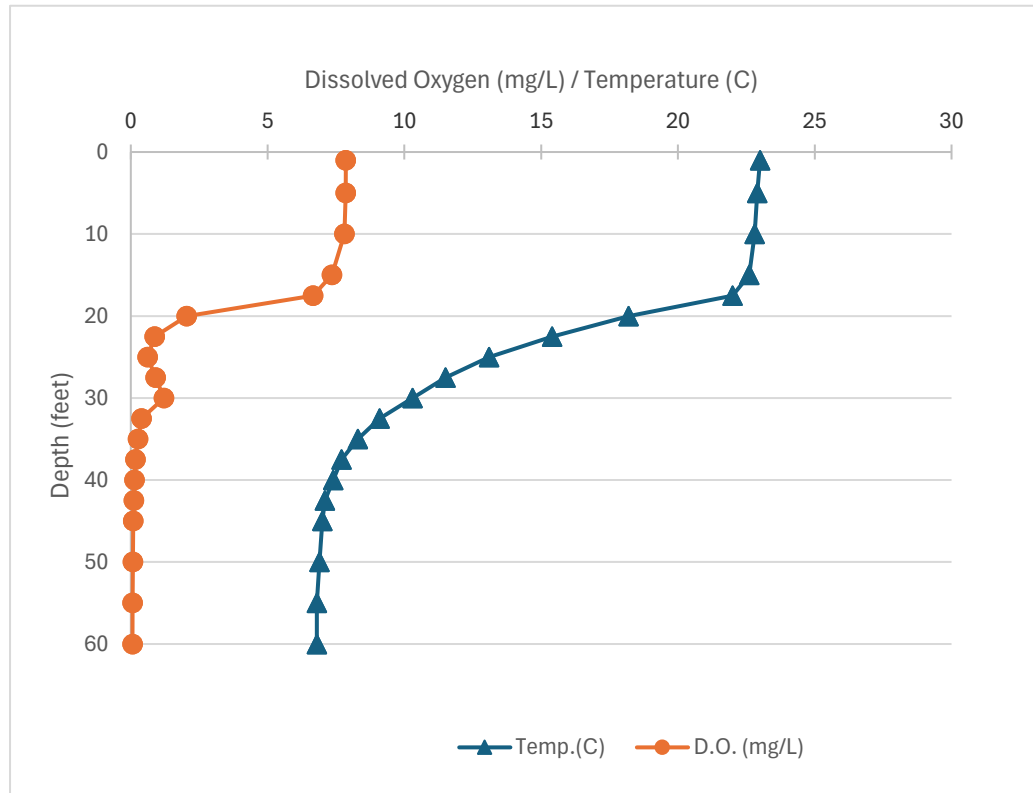
Name: Crystal Lake  
 County: Hillsdale  
 Site ID: 300269  
 Date: 8/23/2024

### Dissolved Oxygen and Temperature Profile

Depth (ft)	Temp.(C)	D.O. (mg/L)
1	23	7.86
1	23	7.86
5	22.9	7.85
5	22.9	7.85
10	22.8	7.81
10	22.8	7.81
15	22.6	7.35
15	22.6	7.35
17.5	22	6.66
17.5	22	6.66
20	18.2	2.04
20	18.2	2.04
22.5	15.4	0.87
22.5	15.4	0.87
25	13.1	0.62
25	13.1	0.62
27.5	11.5	0.91
27.5	11.5	0.91
30	10.3	1.21
30	10.3	1.21
32.5	9.1	0.39
32.5	9.1	0.39
35	8.3	0.26
35	8.3	0.26
37.5	7.7	0.17
37.5	7.7	0.17
40	7.4	0.14
40	7.4	0.14
42.5	7.1	0.11
42.5	7.1	0.11
45	7	0.09
45	7	0.09
50	6.9	0.08
50	6.9	0.08

Lake: Crystal Lake (Hillsdale Co.)

8/23/2024



55	6.8	0.07
55	6.8	0.07
60	6.8	0.06
60	6.8	0.06

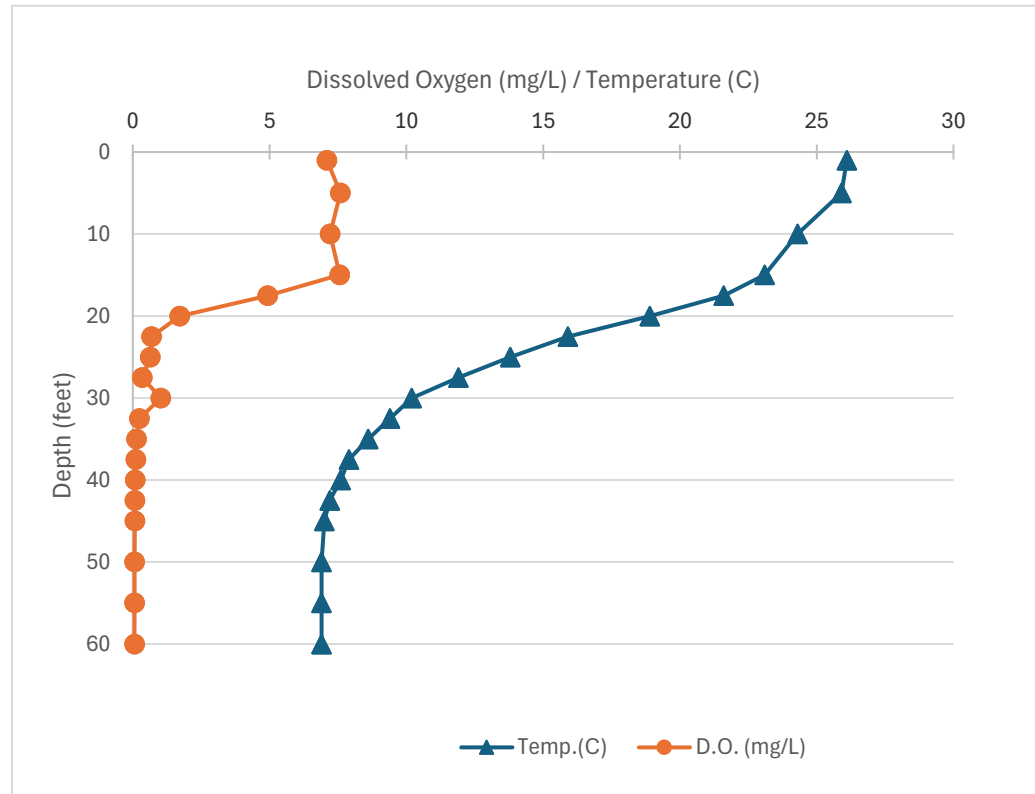
Name: Crystal Lake  
 County: Hillsdale  
 Site ID: 300269  
 Date: 8/29/2024

### Dissolved Oxygen and Temperature Profile

Depth (ft)	Temp.(C)	D.O. (mg/L)
1	26.1	7.09
1	26.1	7.09
5	25.9	7.59
5	25.9	7.59
10	24.3	7.21
10	24.3	7.21
15	23.1	7.56
15	23.1	7.56
17.5	21.6	4.93
17.5	21.6	4.93
20	18.9	1.71
20	18.9	1.71
22.5	15.9	0.69
22.5	15.9	0.69
25	13.8	0.64
25	13.8	0.64
27.5	11.9	0.35
27.5	11.9	0.35
30	10.2	1.02
30	10.2	1.02
32.5	9.4	0.24
32.5	9.4	0.24
35	8.6	0.14
35	8.6	0.14
37.5	7.9	0.11
37.5	7.9	0.11
40	7.6	0.09
40	7.6	0.09
42.5	7.2	0.08
42.5	7.2	0.08
45	7	0.08
45	7	0.08
50	6.9	0.07
50	6.9	0.07

Lake: Crystal Lake (Hillsdale Co.)

8/29/2024



55	6.9	0.07
55	6.9	0.07
60	6.9	0.06
60	6.9	0.06

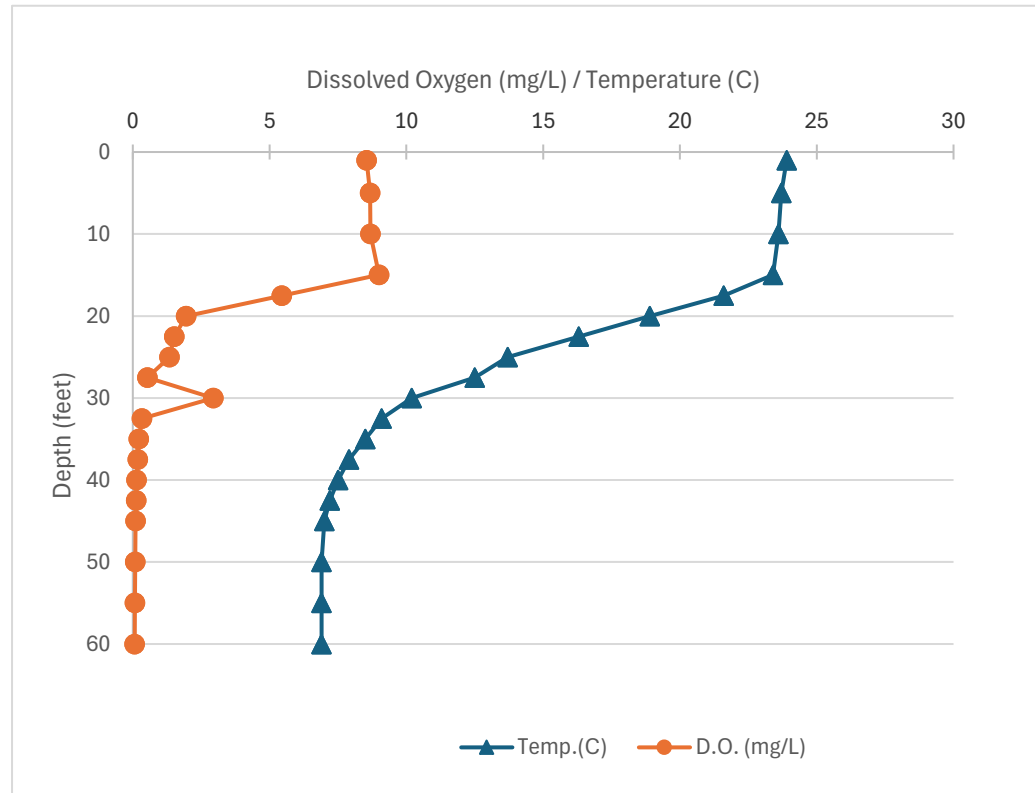
Name: Crystal Lake  
 County: Hillsdale  
 Site ID: 300269  
 Date: 9/5/2024

### Dissolved Oxygen and Temperature Profile

Depth (ft)	Temp.(C)	D.O. (mg/L)
1	23.9	8.55
1	23.9	8.55
5	23.7	8.67
5	23.7	8.67
10	23.6	8.69
10	23.6	8.69
15	23.4	9
15	23.4	9
17.5	21.6	5.44
17.5	21.6	5.44
20	18.9	1.95
20	18.9	1.95
22.5	16.3	1.52
22.5	16.3	1.52
25	13.7	1.34
25	13.7	1.34
27.5	12.5	0.53
27.5	12.5	0.53
30	10.2	2.94
30	10.2	2.94
32.5	9.1	0.33
32.5	9.1	0.33
35	8.5	0.22
35	8.5	0.22
37.5	7.9	0.18
37.5	7.9	0.18
40	7.5	0.14
40	7.5	0.14
42.5	7.2	0.12
42.5	7.2	0.12
45	7	0.1
45	7	0.1
50	6.9	0.09
50	6.9	0.09

Lake: Crystal Lake (Hillsdale Co.)

9/5/2024





55	6.9	0.08
55	6.9	0.08
60	6.9	0.07
60	6.9	0.07

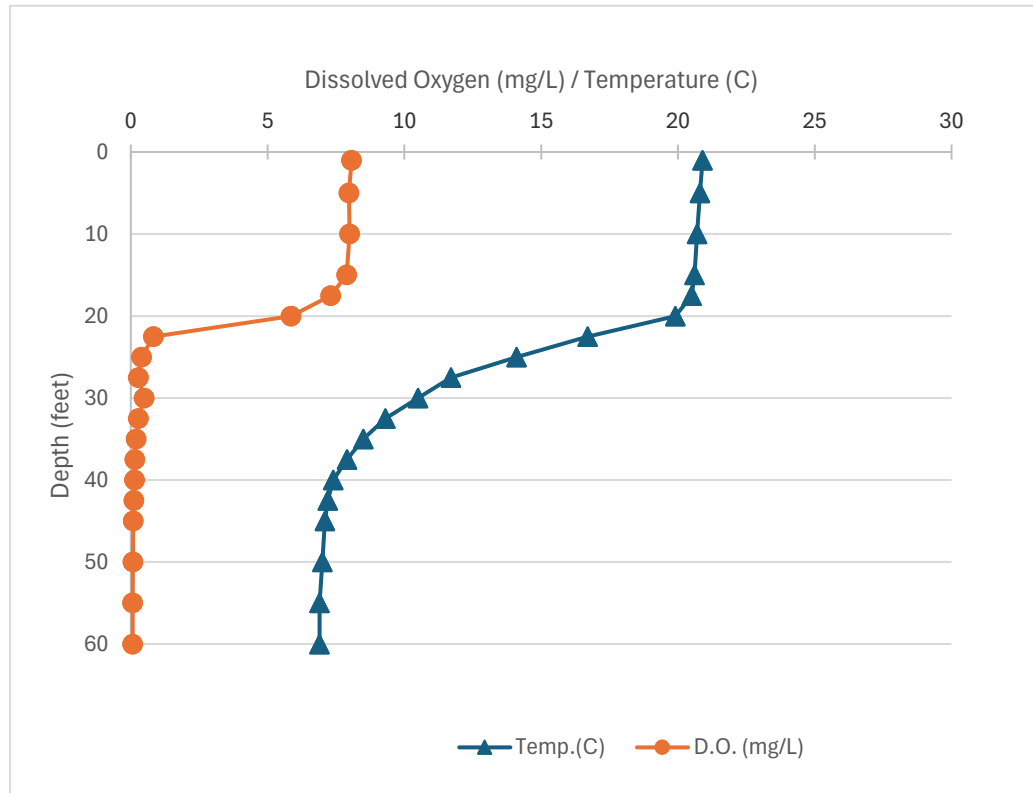
Name: Crystal Lake  
 County: Hillsdale  
 Site ID: 300269  
 Date: 9/10/2024

### Dissolved Oxygen and Temperature Profile

Depth (ft)	Temp.(C)	D.O. (mg/L)
1	20.9	8.07
1	20.9	8.07
5	20.8	7.97
5	20.8	7.97
10	20.7	7.99
10	20.7	7.99
15	20.6	7.89
15	20.6	7.89
17.5	20.5	7.31
17.5	20.5	7.31
20	19.9	5.86
20	19.9	5.86
22.5	16.7	0.82
22.5	16.7	0.82
25	14.1	0.39
25	14.1	0.39
27.5	11.7	0.28
27.5	11.7	0.28
30	10.5	0.49
30	10.5	0.49
32.5	9.3	0.27
32.5	9.3	0.27
35	8.5	0.19
35	8.5	0.19
37.5	7.9	0.15
37.5	7.9	0.15
40	7.4	0.13
40	7.4	0.13
42.5	7.2	0.11
42.5	7.2	0.11
45	7.1	0.09
45	7.1	0.09
50	7	0.08
50	7	0.08

Lake: Crystal Lake (Hillsdale Co.)

9/10/2024



55	6.9	0.07
55	6.9	0.07
60	6.9	0.07
60	6.9	0.07

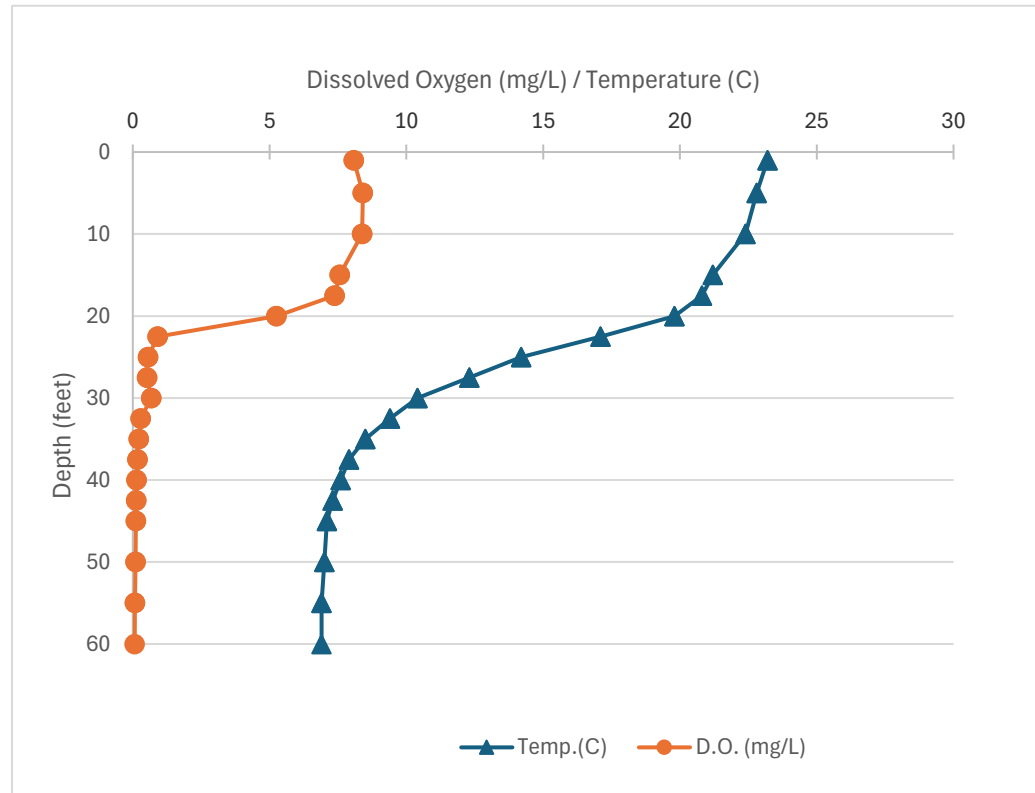
Name: Crystal Lake  
 County: Hillsdale  
 Site ID: 300269  
 Date: 9/16/2024

### Dissolved Oxygen and Temperature Profile

Depth (ft)	Temp.(C)	D.O. (mg/L)
1	23.2	8.08
1	23.2	8.08
5	22.8	8.41
5	22.8	8.41
10	22.4	8.38
10	22.4	8.38
15	21.2	7.56
15	21.2	7.56
17.5	20.8	7.38
17.5	20.8	7.38
20	19.8	5.25
20	19.8	5.25
22.5	17.1	0.91
22.5	17.1	0.91
25	14.2	0.56
25	14.2	0.56
27.5	12.3	0.52
27.5	12.3	0.52
30	10.4	0.67
30	10.4	0.67
32.5	9.4	0.29
32.5	9.4	0.29
35	8.5	0.22
35	8.5	0.22
37.5	7.9	0.17
37.5	7.9	0.17
40	7.6	0.14
40	7.6	0.14
42.5	7.3	0.12
42.5	7.3	0.12
45	7.1	0.11
45	7.1	0.11
50	7	0.1
50	7	0.1

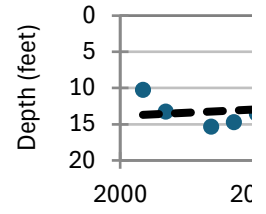
Lake: Crystal Lake (Hillsdale Co.)

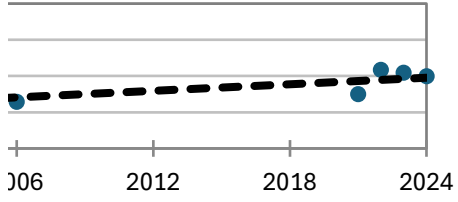
9/16/2024



55	6.9	0.08
55	6.9	0.08
60	6.9	0.07

2001	10.23077	3.941757	39	3	19	43.59222
2002	13.275	1.697328	20	11.5	18	39.83425
2004	15.34211	2.179785	19	13.5	22	37.74641
2005	14.72222	1.832888	18	12.5	18	38.34142
2006	13.58333	2.691217	18	10.5	22	39.503
2021	12.5	3.745586	18	8	22.5	40.70209
2022	9.157895	2.603697	19	6	15	45.19049
2023	9.555556	1.688098	18	7	13	44.57725
2024	10.02632	2.56295	19	6	14	43.88346





Year	# Reading	Min	Max	Average
2024	19	6.0	14.0	10.0
2019-2023	55	6.0	22.5	10.4
2001-2018	114	3.0	22.0	13.4
2024 All CLMP	3348	0.5	85.0	11.7

Std. Dev	Carlson TSI	Crystal	Hillsdale	300269
2.6	44			
2.7	43		# of bottom measurements	
2.5	40		0	
6.2	43			







