



# 2017 Data Report for Lake Lancelot, Gladwin County

Site ID: 260104

44.112557°N, 84.460721°W

The CLMP is brought to you by:



**About this report:**

This report is a summary of the data that have been collected through the Cooperative Lakes Monitoring Program. The contents have been customized for your lake. The first page is a summary of the Trophic Status Indicators of your lake (Secchi Disk Transparency, Chlorophyll-a, Spring Total Phosphorus, and Summer Total Phosphorus). Where data are available, they have been summarized for the most recent field season, five years prior to the most recent field season, and since the first year your lake has been enrolled in the program.

If you did not take 8 or more Secchi disk measurements or 4 or more chlorophyll measurements, there will not be summary data calculated for these parameters. These numbers of measurements are required to ensure that the results are indicative of overall summer conditions.

If you enrolled in Dissolved Oxygen/Temperature, the summary page will have a graph of one of the profiles taken during the late summer (typically August or September). If your lake stratifies, we will use a graph showing the earliest time of stratification, because identifying the timing of this condition and the depth at which it occurs is typically the most important use of dissolved oxygen measurements.

The back of the summary page will be an explanation of the Trophic Status Index and where your lake fits on that scale.

The rest of the report will be aquatic plant summaries, Score the Shore results, and larger graphs, including all Dissolved Oxygen/Temperature Profiles that you recorded. For Secchi Disk, Chlorophyll, and Phosphorus parameters, you need to have two years of data for a graph to make logical sense. Therefore if this is the first year you have enrolled in the CLMP, you will not receive a graph for these parameters.

Remember that some lakes see a lot of fluctuation in these parameters from year to year. Until you have eight years worth of data, consider all trends to be preliminary.

To learn more about the CLMP monitoring parameters or get definitions to unknown terms, check out the CLMP Manual, found at: <https://micorps.net/wp-content/uploads/CLMP-Manual.pdf>

**Thank you!**

The CLMP leadership team would like to thank you for all of your efforts over the past year. The CLMP would not exist without dedicated and hardworking volunteers!

The CLMP Leadership Team is made of: Marcy Knoll Wilmes, Jean Roth, Jo Latimore, Paul Steen, Scott Brown, Laura Kaminski, and Michele Leduc-Lapierre

**Questions?**

If you have questions on this report or believe that the tabulated data for your lake in this report are in error please contact:

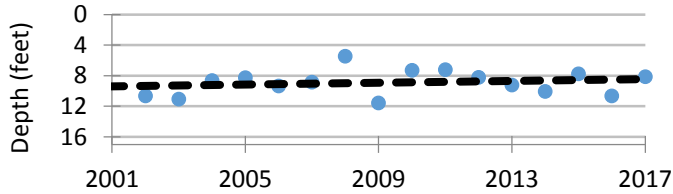
**Paul Steen (psteen@hrwc.org), MiCorps Program Manager**

# Lake Lancelot, Gladwin County 2017 CLMP Results



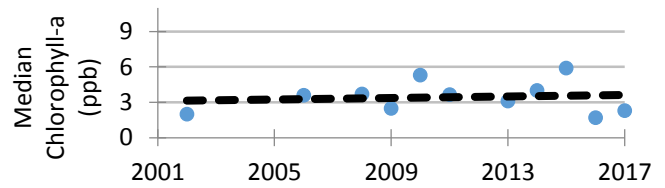
## Secchi Disk Transparency (feet)

Year	# Readings	Min	Max	Average	Std. Dev	Carlson TSI
2017	9	6.5	10.0	8.1	1.1	47
2012-2016	52	5.5	18.5	8.1	2.3	45
1998-2011	118	2.5	15.0	8.8	1.8	46
2017 All CLMP Lakes	2949	1.0	52.0	12.3	2.7	43



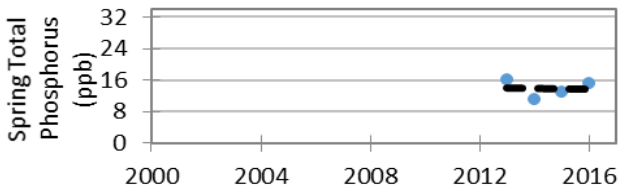
## Chlorophyll-a (parts per billion)

Year	# Samples	Min	Max	Median	Std. Dev	Carlson TSI
2017	5	1.2	3.7	2.3	0.9	39
2012-2016	20	<1.0	8.4	3.6	1.6	43
2002-2011	38	<1.0	11.0	3.6	2.1	43
2017 All CLMP Lakes	628	< 1.0	28.0	1.8	4.3	36



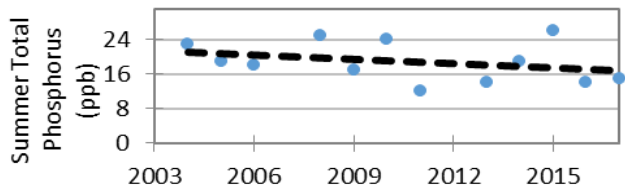
## Spring Phosphorus (parts per billion)

Year	# Samples	Min	Max	Average	Std. Dev
2016	1	15.0	15.0	15.0	NA
2011-2015	4	11.0	16.0	13.3	2.5
2001-2010	6	8.0	29.0	18.3	8.2
2017 All CLMP Lakes	188	<= 3	120	11.6	12.7

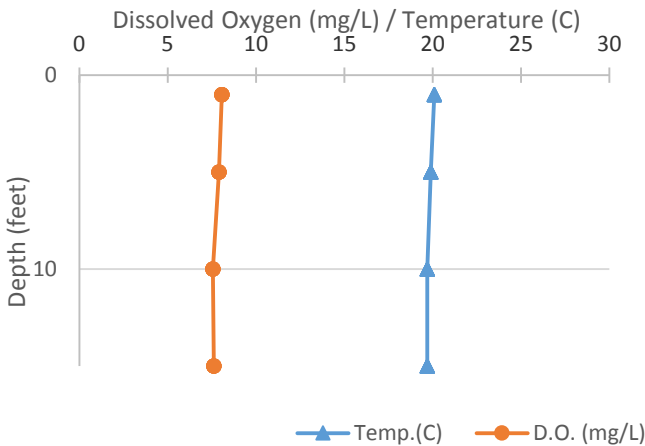


## Summer Phosphorus (parts per billion)

Year	# Samples	Min	Max	Average	Std. Dev	Carlson TSI
2017	1	15.0	15.0	15.0	NA	43
2012-2016	4	14.0	26.0	18.3	5.7	46
2004-2011	7	12.0	25.0	19.7	4.6	47
2017 All CLMP Lakes	208	<= 3	52.0	11.1	8.4	39



## Dissolved Oxygen and Temperature Profile 9/6/2017



## Summary

Average TSI	2017	2012-2016	1998-2011
Lake Lancelot	43	45	45
All CLMP Lakes	40	40	41

With an average TSI score of 43 based on 2017 Secchi transparency, chlorophyll-a, and summer total phosphorus data, this lake is rated as a mesotrophic lake.

Due to its low depth, the lake is able to maintain dissolved oxygen throughout the water column for the entire summer, though there are days when dissolved oxygen gets low or anoxic on the bottom waters.

Long term trends indicate that the trophic status parameters have not changed beyond minor year-to-year variation since monitoring began.

\* = No sample received W= Value is less than the detection limit (<3 ppb) T= Value reported is less than the reporting limit (5 ppb). Result is estimated.  
<1.0 = Chlorophyll-a: Sample value is less than limit of quantification (<1 ppb).

# Trophic Status Index Explained

In 1977, limnologist Dr. Robert Carlson developed a numerical scale (0-100) where the numbers indicate the level of nutrient enrichment. Using the proper equations, we can convert results from Summer Total Phosphorus, Secchi Depth, and Chlorophyll-a to this Trophic Status Index (TSI). The TSI numbers are furthermore grouped into general categories (oligotrophic, mesotrophic, eutrophic, and hypereutrophic), to quickly give us a way to understand the general nutrient level of any lake.

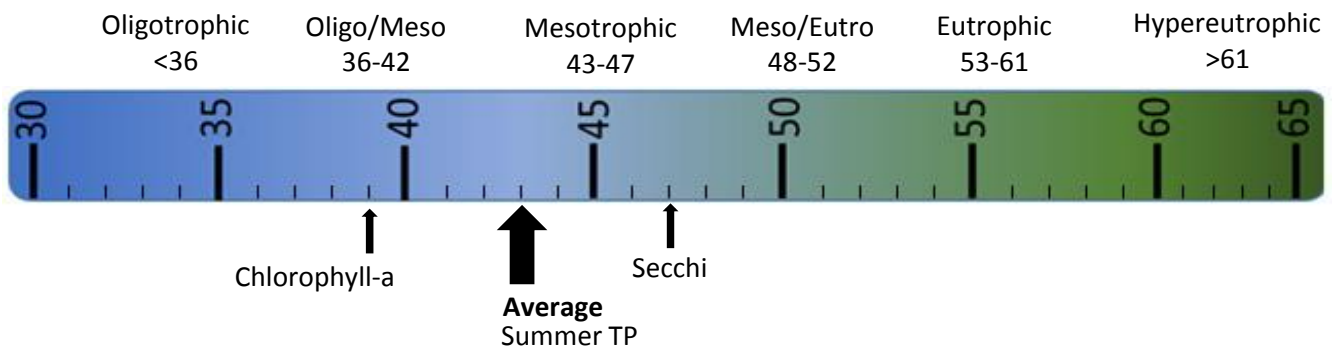
The tables below give the results-to-TSI conversions for the water quality data ranges normally seen in the CLMP. The formulas for this conversion can be found in the CLMP manual (<https://micorps.net/wp-content/uploads/CLMP-Manual.pdf>).

Phosphorus (ppb)	TSI Value
<5	<27
6	30
8	34
10	37
12	40
15	43
18	46
21	48
24	50
32	54
36	56
42	58
48	60
>50	>61

Secchi Depth (ft)	TSI Value
>30	<28
25	31
20	34
15	38
12	42
10	44
7.5	48
6	52
4	57
<3	>61

Chlorophyll-a (ppb)	TSI Value
<1	<31
2	37
3	41
4	44
6	48
8	51
12	55
16	58
22	61
>22	>61

TSI for Lake Lancelot in 2017	
Average	43
Secchi Disk	47
Summer TP	43
Chlorophyll-a	39



**Oligotrophic:** Generally deep and clear lakes with little aquatic plant or algae growth. These lakes maintain sufficient dissolved oxygen in the cool, deep-bottom waters during late summer to support cold water fish, such as trout and whitefish.

**Mesotrophic:** Lakes that fall between oligotrophic and eutrophic. Mid-ranged amounts of nutrients.

**Eutrophic:** Highly productive eutrophic lakes are generally shallow, turbid, and support abundant aquatic plant growth. In deep eutrophic lakes, the cool bottom waters usually contain little or no dissolved oxygen. Therefore, these lakes can only support warm water fish, such as bass and pike.

**Hypereutrophic:** A specialized category of eutrophic lakes. These lakes exhibit extremely high productivity, such as nuisance algae and weed growth.

# Lake Lancelot, Gladwin County 2017 CLMP Aquatic Plant Results



Lake Lancelot does not have aquatic plant data available for 2017. Consider enrolling in an aquatic plant parameter next year.

## Why is monitoring aquatic plants important?

A major component of the plant community in lakes is the large, leafy, rooted plants. Compared to the microscopic algae the rooted plants are large. Sometimes they are collectively called the “macrophytes” (“macro” meaning large and “phyte” meaning plant). These macrophytes are the plants that people sometimes complain about and refer to as lake weeds.

Far from being weeds, macrophytes or rooted aquatic plants are a natural and essential part of the lake, just as grasses, shrubs and trees are a natural part of the land. Their roots are a fabric for holding sediments in place, reducing erosion and maintaining bottom stability. They provide habitat for fish, including structure for food organisms, nursery areas, foraging and predator avoidance. Waterfowl, shore birds and aquatic mammals use plants to forage on and within, and as nesting materials and cover.

Though plants are important to the lake, overabundant plants can negatively affect fish populations, fishing and other recreational activities. Rooted plant populations increase in abundance as nutrient concentrations increase in the lake. As lakes become more eutrophic rooted plant populations increase. They are rarely a problem in oligotrophic lakes, only occasionally a problem in mesotrophic lakes, sometimes a problem in eutrophic lakes, and often a problem in hypereutrophic lakes.

However, sometimes a lake is invaded by an aquatic plant species that is not native to Michigan. In these cases, even nutrient poor oligotrophic lakes can be threatened. Some of these exotic plants, like Curly-leaf Pondweed, Eurasian Milfoil, Starry Stonewort, and Hydrilla can be extremely disruptive to the lake’s ecosystem and recreational activities.

To avoid a takeover by exotic plants, it is necessary to use Integrated Pest Management (IPM) strategies: monitoring, early detection, rapid response, maintenance control, and preventive management. For more information on these strategies, check out Integrated Pest Management for Nuisance Exotics in Michigan Inland Lakes (MSU Extension Water Quality Publication WQ-56, available at <https://micorps.net/lake-monitoring/clmp-documents/>)

The CLMP offers two parameters on aquatic plants. In the Exotic Aquatic Plant Watch, volunteers concentrate on monitoring and early detection of exotic invasive plants only. In Aquatic Plant Identification and Mapping, volunteers identify all native and non-native plants. In both parameters, volunteers create lake maps or use digital tools to georeference where the plants are found.

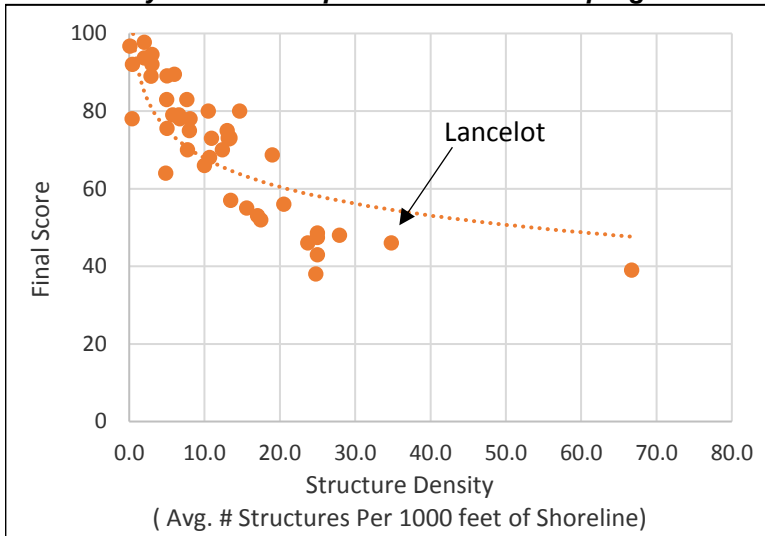
# Lake Lancelot, Gladwin County 2016 Score the Shore Results



The Score the Shore Habitat Assessment was conducted on Lake Lancelot in 2016.

This assessment involves rating 1000 foot sections of shoreline for aquatic vegetation, shoreline vegetation, erosion, and erosion control practices (like sea walls). Each shoreline section is given three scores ranging from 0-100 for the categories of Littoral, Riparian, and Erosion Management. The three scores are averaged to produce a average section score. Then a total score is given to the entire lake by averaging all of the average section scores. A score of 0 indicates a shoreline that has been extremely disturbed by human impacts and no natural shoreline remains. A score of 100 indicates a shoreline that is nearly pristine.

### How does your lake compare to others in the program?



Lake Lancelot:	
Number of Sections:	15
Number of Structures:	522
Structure Density:	34.8
Final Score:	46

All 42 Participating Lakes from 2015-2018:	
Avg. Number of Sections:	16.3
Avg. Number of Structures:	248.5
Avg. Structure Density:	15.2
Avg. Final Score:	70.5

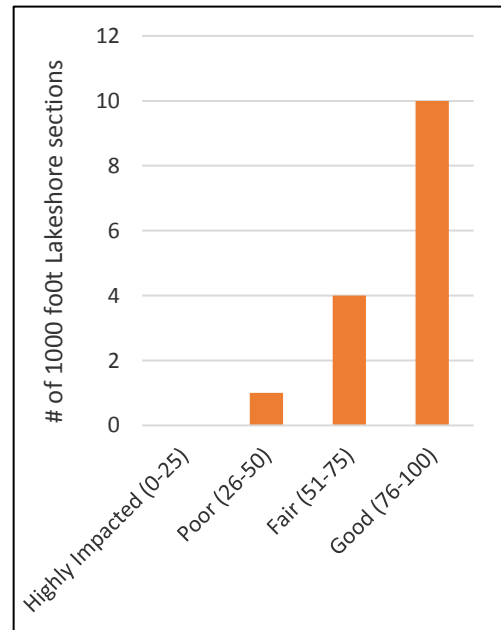
There is a very tight relationship between Final Score and Structure Density. It will be interesting to see if and how this changes as more lakes go through this scoring process.

### Analysis specific to Lake Lancelot:

Overall, the lakeshore habitat of Lake Lancelot is below average when compared to the other lakes in the program. The majority of the lake sections score poor or worse (1 highly impacted, 10 poor, 4 fair).

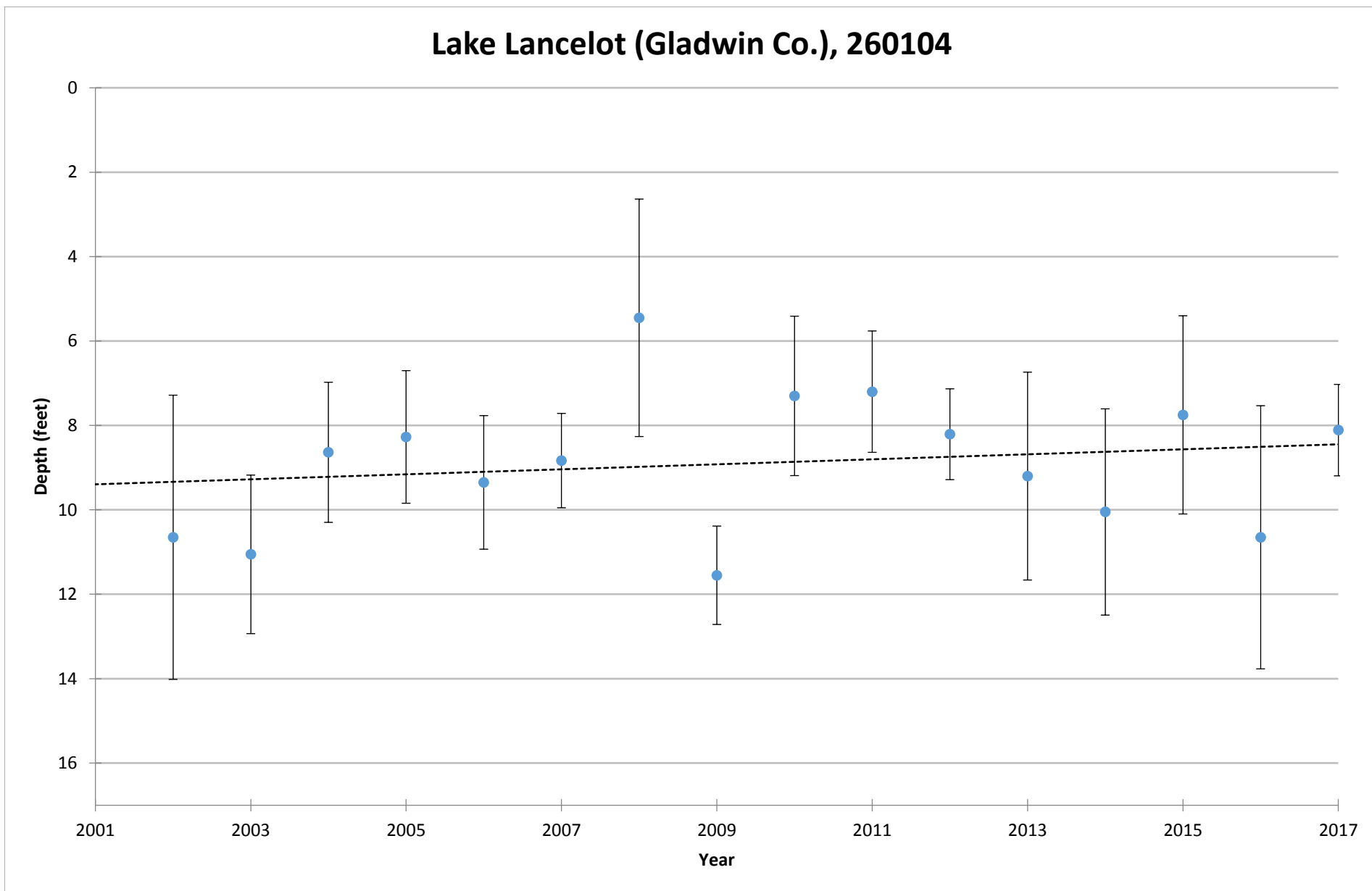
All three of the scoring categories came out approximately the same on Lancelot (Average scores: Littoral 43, Riparian 44, Erosion Control 52) This means that there is no particular strength or weakness to the overall habitat on Lake Lancelot.

To improve scores, residents should work on all three categories. Keep native plants in the shallows, allow unvegetated areas to grow on the shoreline, and remove sea wall whenever possible. In particular, residents should look at section 2 and determine if there would be a way to boost the riparian score here (this section was highly impacted and scored a 0 for the riparian category).



COOPERATIVE LAKES MONITORING PROGRAM  
SUMMER MEAN TRANSPARENCY

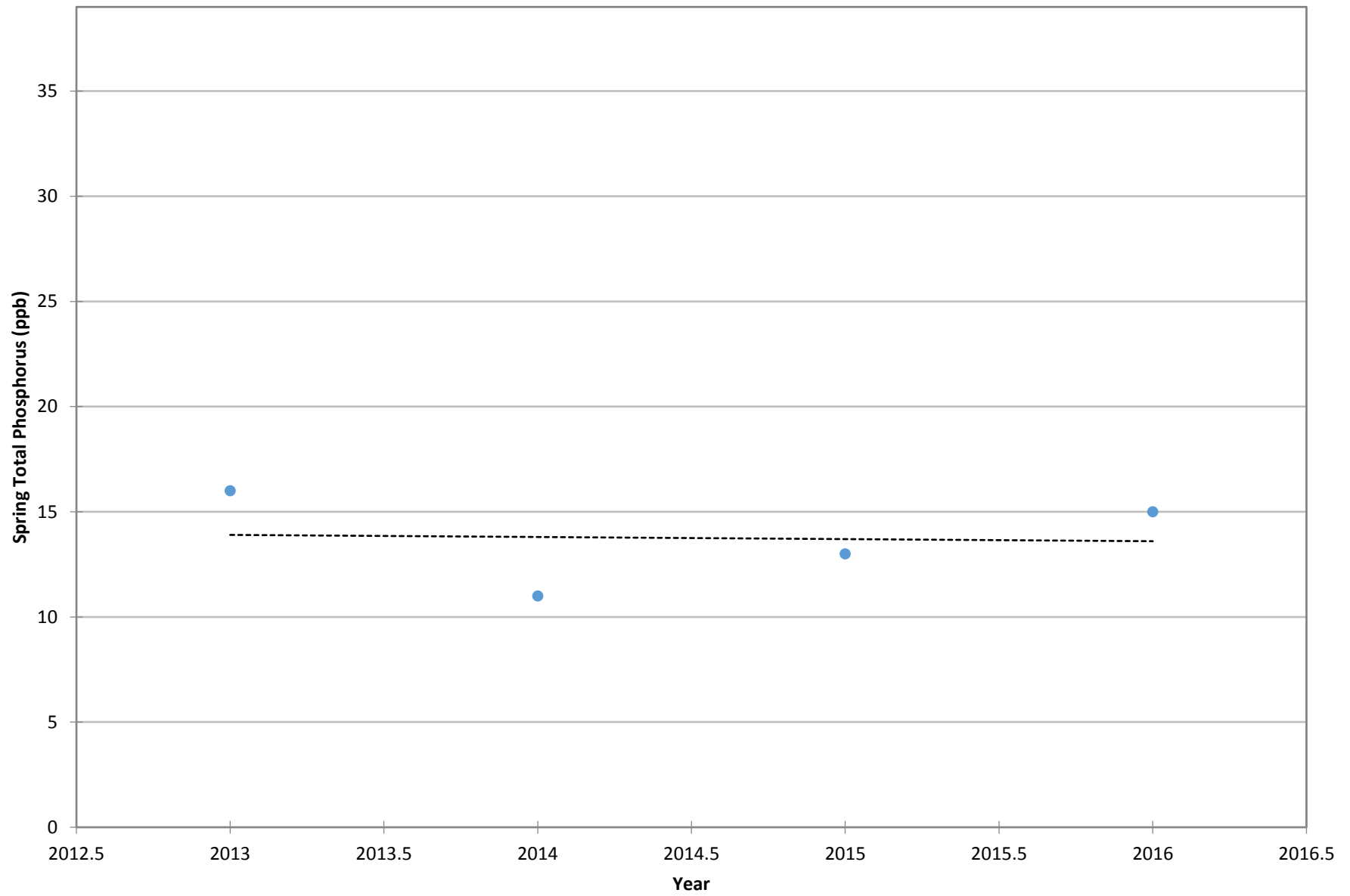
**Lake Lancelot (Gladwin Co.), 260104**



Vertical bars indicate standard deviation

COOPERATIVE LAKES MONITORING PROGRAM  
SPRING TOTAL PHOSPHORUS

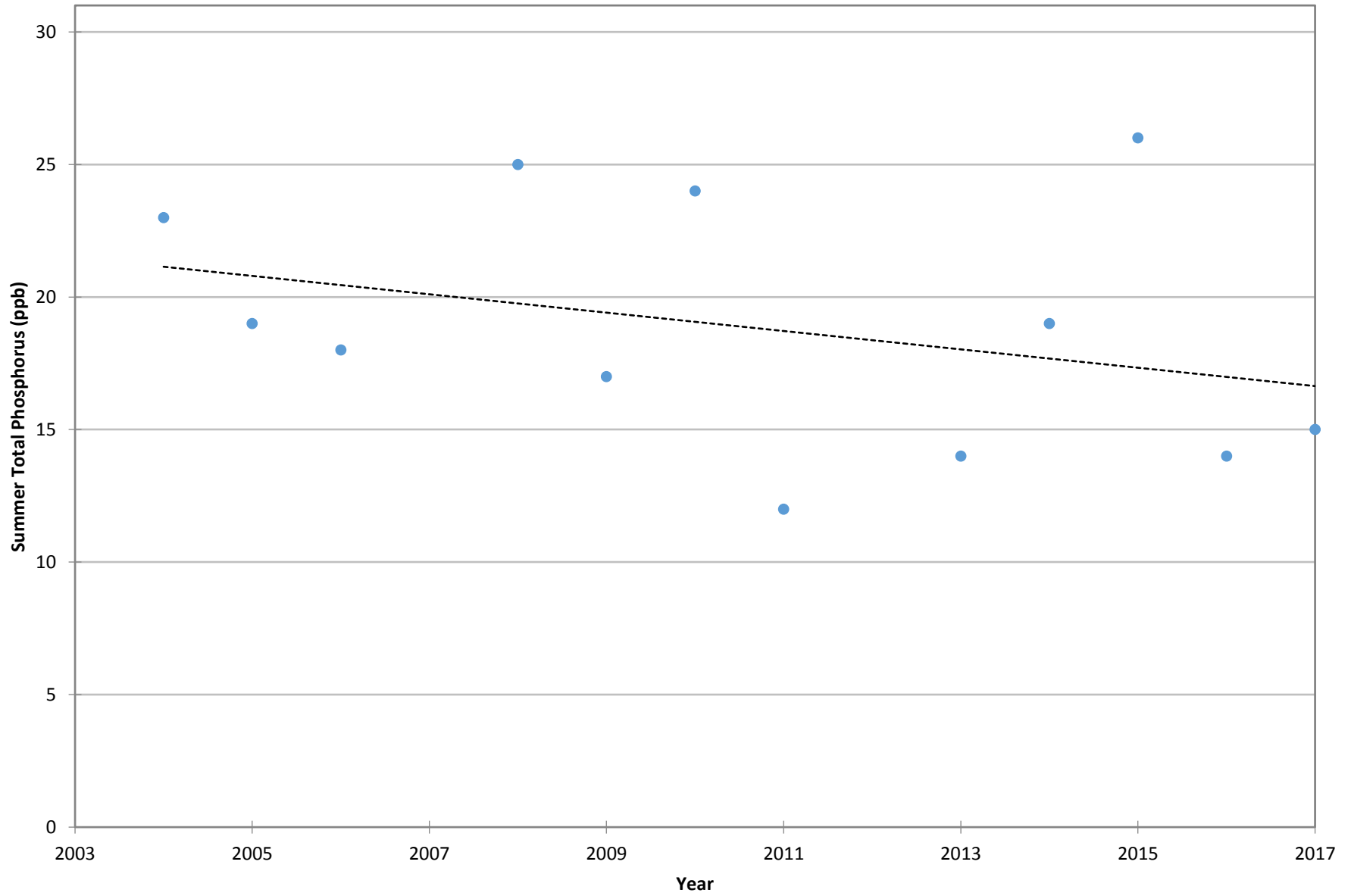
**Lake Lancelot (Gladwin Co.), 260104**





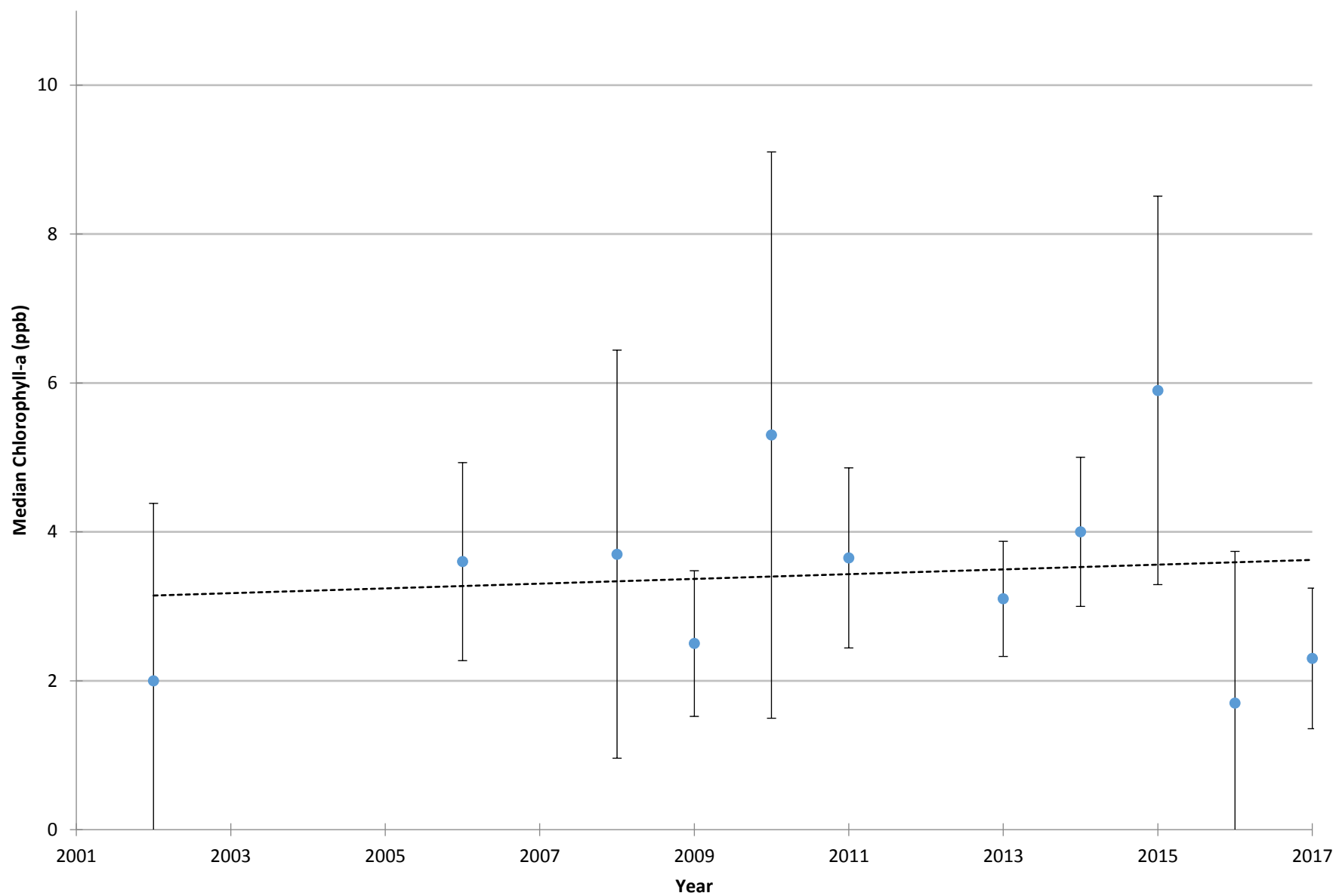
COOPERATIVE LAKES MONITORING PROGRAM  
SUMMER TOTAL PHOSPHORUS

**Lake Lancelot (Gladwin Co.), 260104**



COOPERATIVE LAKES MONITORING PROGRAM  
SUMMER MEDIAN CHLOROPHYLL-A

**Lake Lancelot (Gladwin Co.), 260104**



Vertical bars indicate standard deviation

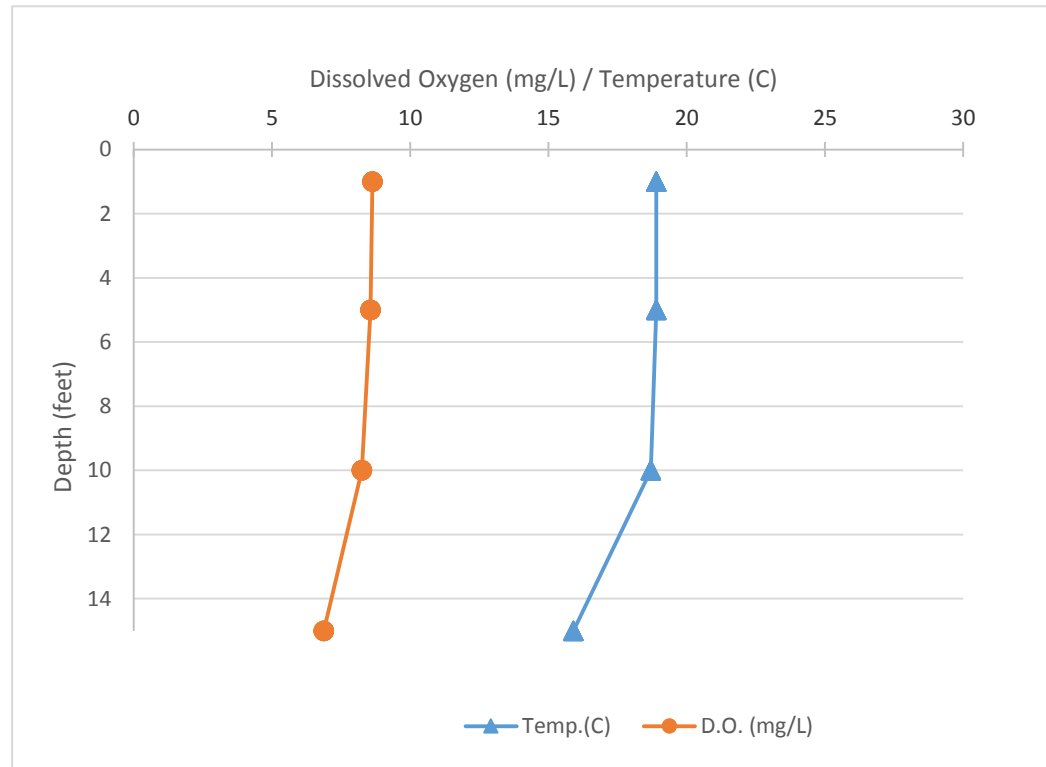
Name: Lake Lancelot  
County: Gladwin  
Site ID: 260104  
Date: 5/31/2017

### Dissolved Oxygen and Temperature Profile

Depth (ft)	Temp.(C)	D.O. (mg/L)
1	18.9	8.63
1	18.9	8.63
1	18.9	8.63
1	18.9	8.63
1	18.9	8.63
5	18.9	8.57
5	18.9	8.57
5	18.9	8.57
5	18.9	8.57
5	18.9	8.57
10	18.7	8.25
10	18.7	8.25
10	18.7	8.25
10	18.7	8.25
10	18.7	8.25
15	15.9	6.87
15	15.9	6.87
15	15.9	6.87
15	15.9	6.87
15	15.9	6.87

Lake: Lake Lancelot (Gladwin Co.)

5/31/2017



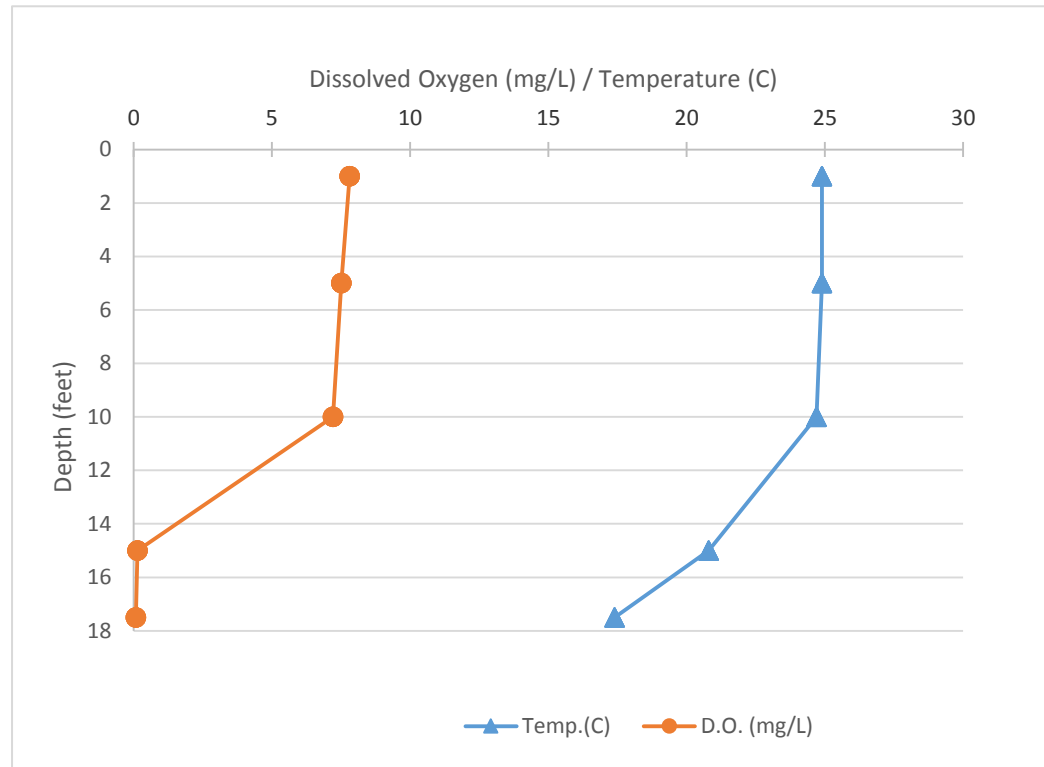
Name: Lake Lancelot  
 County: Gladwin  
 Site ID: 260104  
 Date: 7/27/2017

### Dissolved Oxygen and Temperature Profile

Depth (ft)	Temp.(C)	D.O. (mg/L)
1	24.9	7.81
1	24.9	7.81
1	24.9	7.81
1	24.9	7.81
5	24.9	7.51
5	24.9	7.51
5	24.9	7.51
5	24.9	7.51
10	24.7	7.21
10	24.7	7.21
10	24.7	7.21
10	24.7	7.21
15	20.8	0.14
15	20.8	0.14
15	20.8	0.14
15	20.8	0.14
17.5	17.4	0.08
17.5	17.4	0.08
17.5	17.4	0.08
17.5	17.4	0.08

Lake: Lake Lancelot (Gladwin Co.)

7/27/2017



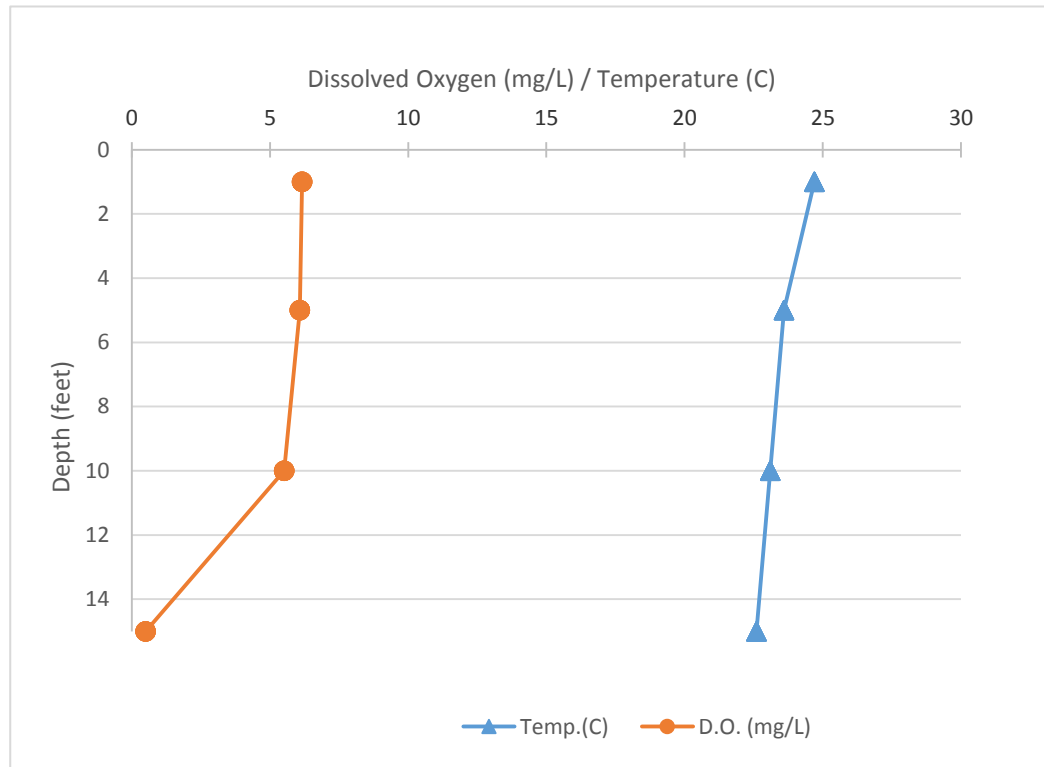
Name: Lake Lancelot  
County: Gladwin  
Site ID: 260104  
Date: 8/15/2017

### Dissolved Oxygen and Temperature Profile

Depth (ft)	Temp.(C)	D.O. (mg/L)
1	24.7	6.16
1	24.7	6.16
1	24.7	6.16
1	24.7	6.16
1	24.7	6.16
5	23.6	6.08
5	23.6	6.08
5	23.6	6.08
5	23.6	6.08
5	23.6	6.08
10	23.1	5.51
10	23.1	5.51
10	23.1	5.51
10	23.1	5.51
10	23.1	5.51
15	22.6	0.5
15	22.6	0.5
15	22.6	0.5
15	22.6	0.5
15	22.6	0.5

Lake: Lake Lancelot (Gladwin Co.)

8/15/2017



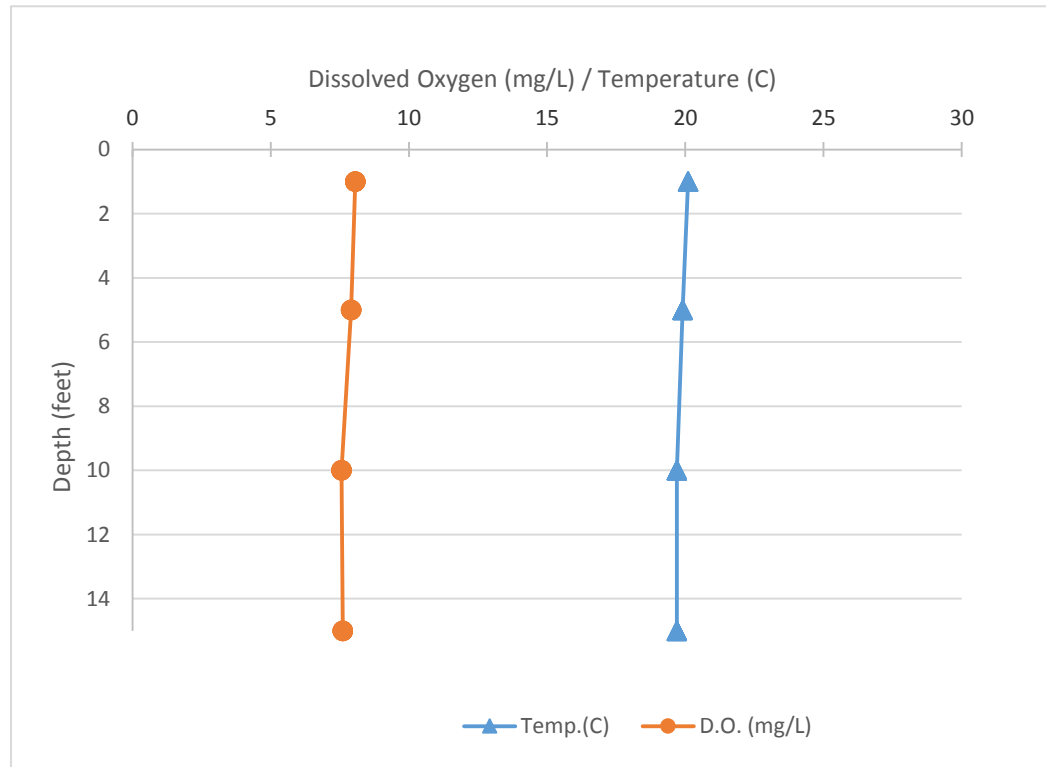
Name: Lake Lancelot  
 County: Gladwin  
 Site ID: 260104  
 Date: 9/6/2017

### Dissolved Oxygen and Temperature Profile

Depth (ft)	Temp.(C)	D.O. (mg/L)
1	20.1	8.06
1	20.1	8.06
1	20.1	8.06
1	20.1	8.06
1	20.1	8.06
5	19.9	7.91
5	19.9	7.91
5	19.9	7.91
5	19.9	7.91
5	19.9	7.91
10	19.7	7.56
10	19.7	7.56
10	19.7	7.56
10	19.7	7.56
10	19.7	7.56
15	19.7	7.61
15	19.7	7.61
15	19.7	7.61
15	19.7	7.61
15	19.7	7.61

Lake: Lake Lancelot (Gladwin Co.)

9/6/2017



Name: Lake Lancelot  
County: Gladwin  
Site ID: 260104  
Date: 9/10/2017

### Dissolved Oxygen and Temperature Profile

Depth (ft)	Temp.(C)	D.O. (mg/L)
1	18.7	8.95
5	18.7	8.51
10	18.6	8.62

Lake: Lake Lancelot (Gladwin Co.)

9/10/2017

