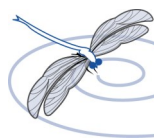




2014 Data Report for Silver Lake, Genesee County

Michigan Lakes– Ours to Protect

The CLMP is brought to you by:



Michigan Clean
Water Corps



Huron
River
Watershed
Council

About this report:

This report is a summary of the data that have been collected through the Cooperative Lakes Monitoring Program. The contents have been customized for your lake. The first page is a summary of the Trophic Status Indicators of your lake (Secchi Disk Transparency, Chlorophyll-a, Spring Total Phosphorus, and Summer Total Phosphorus). Where data are available, they have been summarized for the past field season, the past five years, and since the first year your lake has been enrolled in the program.

If you did not take 8 or more Secchi disk measurements or 4 or more chlorophyll measurements, there will not be summary data calculated for these parameters. This is because missing measurements results in the data not being indicative of overall summer conditions.

If you enrolled in Dissolved Oxygen/Temperature, the summary page will have a graph of one of the profiles taken during the late summer (typically August or September). A late summer graph is used because dissolved oxygen is often depleted in the late summer, and identifying this condition and the depth at which it occurs is typically the most important use of dissolved oxygen measurements.

The back of the summary page will be the results of the Exotic Plant Watch or Full Plant Mapping, if you participated in that parameter.

The rest of the report will be larger graphs, including all Dissolved Oxygen/Temperature Profiles that you recorded. For Secchi Disk, Chlorophyll, and Phosphorus parameters, you need to have two years of data for a graph to make logical sense. Therefore if this is the first year you have enrolled in the CLMP, you will not receive a graph for these parameters.

To learn more about these parameters or get definitions to unknown terms, check out the CLMP Manual found at: http://www.micorps.net/documents/CLMP_Manual.pdf. [Please note: This is a new publication and a printed version will not be available until April 2015. The printed version will be available at the CLMP training held during annual MLSA Conference in early May.]

Thank you!

The CLMP leadership team would like to thank you for all of your efforts over the past year. The CLMP would not exist without dedicated and hardworking volunteers!

The CLMP Leadership Team is made of: Bill Dimond, Jean Roth, Jo Latimore, Paul Steen, Scott Brown, Laura Kaminski, and Anne Sturm

Questions?

If you have questions on this report or believe that the tabulated data for your lake in this report are in error please contact:

Paul Steen (psteen@hrwc.org), MiCorps Program Manager

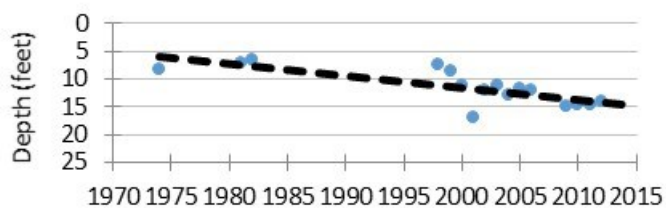
Silver Lake, Genesee County

2014 CLMP Results



Secchi Disk Transparency (feet)

Year	# Readings	Min	Max	Average	Std. Dev	Carlson TSI
2014	4	10.5	21.5	NA	NA	NA
2009-2013	93	8.0	25.0	14.6	5.1	38
1974-2008	233	3.5	22.0	10.5	2.8	44
2014 All CLMP	3050	2.0	50.0	13.1	2.1	41



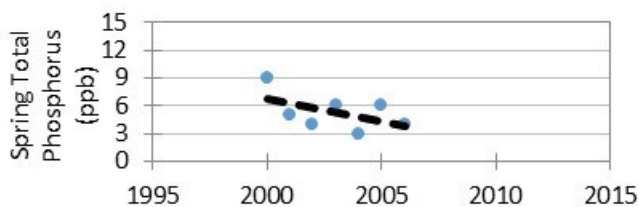
Chlorophyll-a (parts per billion)

Year	# Samples	Min	Max	Median	Std. Dev	Carlson TSI
2002	5	<1.0	4.0	2.0	1.3	37
2014 All CLMP	583	<1.0	23.5	2.0	2.9	37

No graph: Not enough data

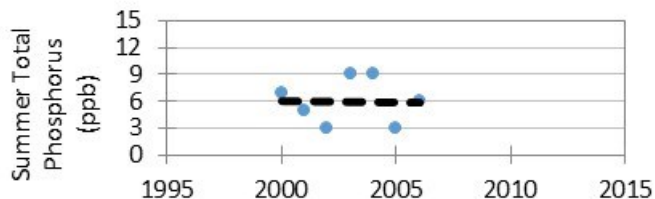
Spring Total Phosphorus (parts per billion)

Year	# Samples	Min	Max	Average	Std. Dev
2006	1	<5 T	<5 T	<5 T	NA
2001-2005	5	<=3 W	6	4.8	1.3
2000	1	9	9	9.0	NA
2014 All CLMP	164	3 W	77	13.2	11.1



Summer Total Phosphorus (parts per billion)

Year	# Samples	Min	Max	Average	Std. Dev	Carlson TSI
2006	1	6	6	6.0	NA	30
2001-2005	5	<=3 W	9	5.8	3.0	28
2000	1	7	7	7.0	NA	32
2014 All CLMP	180	4 T	62	13.5	7.9	41



Dissolved Oxygen and Water Temperature Profile

Silver Lake does not have dissolved oxygen/water temperature data available. Consider enrolling in this parameter next year.

Fish, insects, mollusks, and crustaceans need dissolved oxygen to live in water. By late summer, many lakes stratify, with cold anoxic water on the bottom and warm, oxygen rich water on the surface. Anoxic water occurring too close to the surface is a sign of nutrient enrichment. Understanding the pattern of dissolved oxygen and water temperature in a lake is important for assessing nutrient problems as well as the health of the biological community.

Summary

Average TSI	2014	2009-2013	1974-2008
Silver Lake	NA	34	44
All Lakes	40	NA	NA

Not enough Secchi measurements were taken to make a 2014 assessment of Silver Lake. However, based on recent past data, an average TSI score of 34 classifies Silver Lake as an oligotrophic lake.

Even with little current data, it is clear that Silver Lake has less nutrients than in the past; transparency has increased and phosphorus levels have declined significantly. The lake used to be mesotrophic (1980's– early 2000's) or perhaps even eutrophic (1970s).

*= No sample received W= Value is less than the detection limit (<3 ppb) T= Value reported is less than the reporting limit (5 ppb). Result is estimated.
 <1 = Chlorophyll-a: Sample value is less than limit of quantification (<1 ppb).

Silver Lake, Genesee County

2014 CLMP Aquatic Plant Results



Silver Lake Lake does not have aquatic plant data available. Consider enrolling in an aquatic plant parameter next year.

Why is monitoring aquatic plants important?

A major component of the plant kingdom in lakes is the large, leafy, rooted plants. Compared to the microscopic algae the rooted plants are large. Sometimes they are collectively called the “macrophytes” (“macro” meaning large and “phyte” meaning plant). These macrophytes are the plants that people sometimes complain about and refer to as lake weeds.

Far from being weeds, macrophytes or rooted aquatic plants are a natural and essential part of the lake, just as grasses, shrubs and trees are a natural part of the land. Their roots are a fabric for holding sediments in place, reducing erosion and maintaining bottom stability. They provide habitat for fish, including structure for food organisms, nursery areas, foraging and predator avoidance. Waterfowl, shore birds and aquatic mammals use plants to forage on and within, and as nesting materials and cover.

Though plants are important to the lake, overabundant plants can negatively affect fish populations, fishing and the recreational activities of property owners. Rooted plant populations increase in abundance as nutrient concentrations increase in the lake. As lakes become more eutrophic rooted plant populations increase. They are rarely a problem in oligotrophic lakes, only occasionally a problem in mesotrophic lakes, sometimes a problem in eutrophic lakes, and often a problem in hypereutrophic lakes.

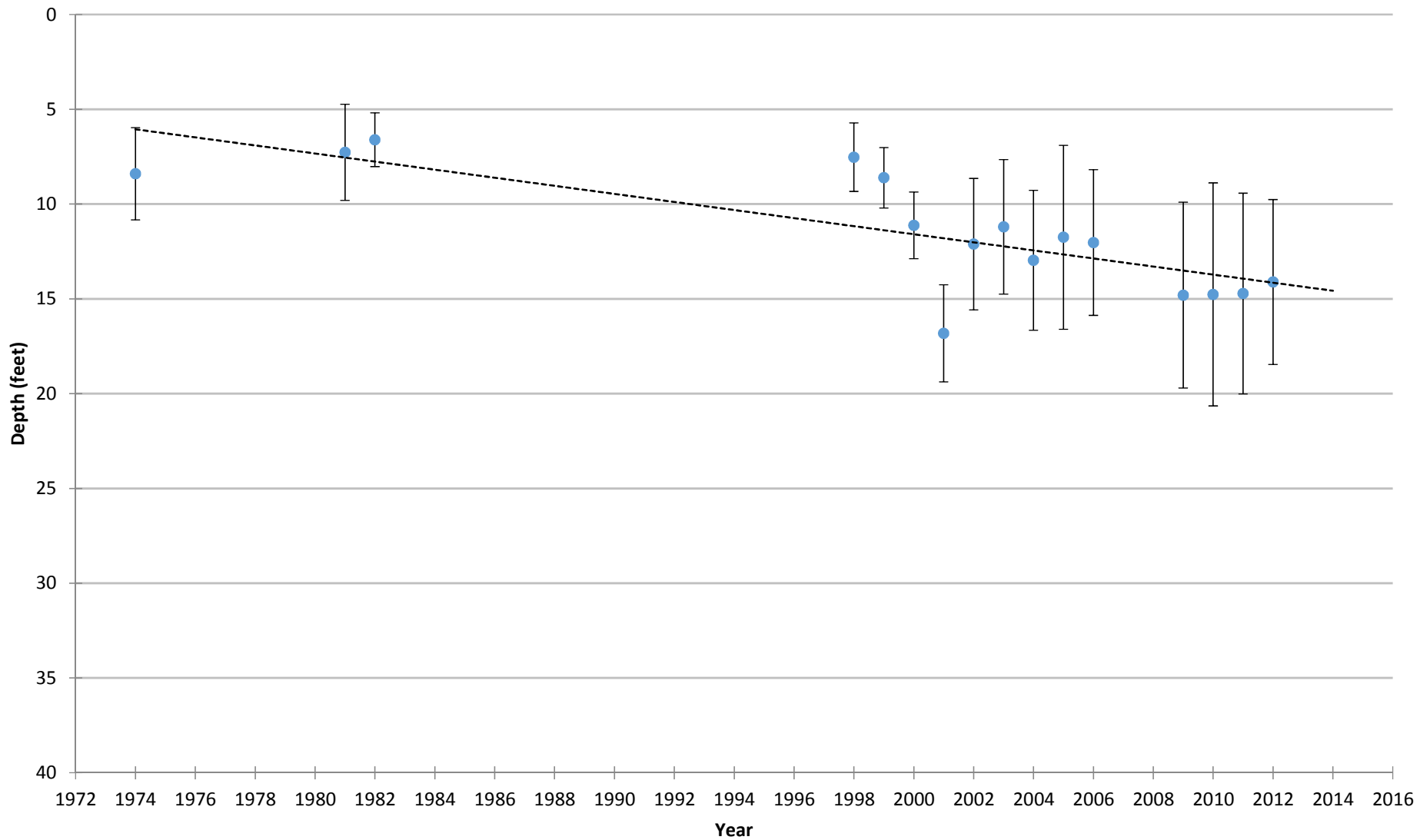
However, sometimes a lake is invaded by an aquatic plant species that is not native to Michigan. In these cases, even nutrient poor oligotrophic lakes can be threatened. Some of these exotic plants, like Curly-leaf Pondweed, Eurasian Milfoil, Starry Stonewort, and Hydrilla can be extremely disruptive to the lake’s ecosystem and recreational activities.

To avoid a takeover by exotic plants, it is necessary to use Integrated Pest Management (IPM) strategies: monitoring, early detection, rapid response, maintenance control, and preventive management. For more information on these strategies, check out Integrated Pest Management for Nuisance Exotics in Michigan Inland Lakes (MSU Extension Water Quality Publication WQ-56, available at <http://www.micorps.net/CLMPdocuments.html>).

The CLMP offers two parameters on aquatic plants. In the exotic aquatic plant watch, volunteers concentrate on monitoring and early detection of exotic invasive plants only. In the full plant mapping program, volunteers identify all native and non-native plants. In both parameters, volunteers create lake maps or use digital tools to georeference where the plants are found.

COOPERATIVE LAKES MONITORING PROGRAM
SUMMER MEAN TRANSPARENCY

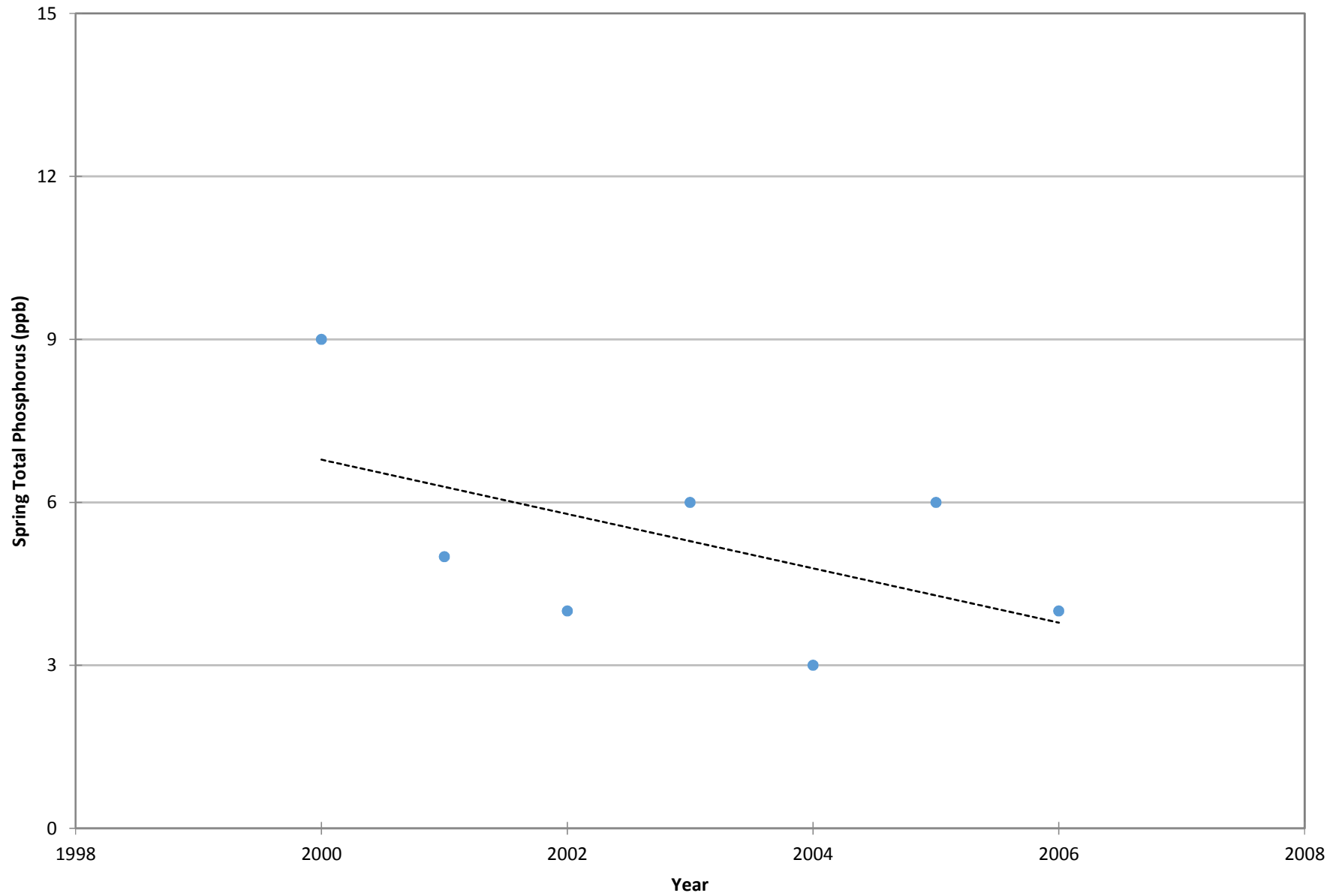
Silver Lake (Genesee Co.), 250481



Vertical bars indicate standard deviation

COOPERATIVE LAKES MONITORING PROGRAM
SPRING TOTAL PHOSPHORUS

Silver Lake (Genesee Co.), 250481



COOPERATIVE LAKES MONITORING PROGRAM
SUMMER TOTAL PHOSPHORUS

Silver Lake (Genesee Co.), 250481

